

Datasheet for ABIN7190538

anti-EID3 antibody**3** Images[Go to Product page](#)

Overview

Quantity:	100 µL
Target:	EID3
Reactivity:	Human
Host:	Rabbit
Clonality:	Polyclonal
Conjugate:	This EID3 antibody is un-conjugated
Application:	ELISA, Western Blotting (WB), Immunohistochemistry (IHC)

Product Details

Immunogen:	Synthetic peptide of Human EID3
Isotype:	IgG
Cross-Reactivity:	Human, Mouse
Purification:	Antigen affinity purification

Target Details

Target:	EID3
Alternative Name:	EID3 (EID3 Products)
Background:	Background: EID3 is highly expressed in testis and shows homology to a region of EID1 implicated in binding to CBP/p300. EID3 acts as a potent inhibitor of nuclear receptor transcriptional activity by a mechanism that is independent of direct interactions with nuclear receptors, including SHP. Furthermore, EID3 directly binds to and blocks the SRC-1 interacting

Target Details

domain of CBP, which has been implicated to act as the interaction surface for nuclear receptor co-activators. Consistent with this idea, EID3 prevents recruitment of CBP to a natural nuclear receptor-regulated promoter.

Aliases: E1A-like inhibitor of differentiation 3 antibody, EID 3 antibody, EID-1-like inhibitor of differentiation 3 antibody, EID-3 antibody, EID3 antibody, EID3_HUMAN antibody, EP300 interacting inhibitor of differentiation 3 antibody, EP300-interacting inhibitor of differentiation 3 antibody, FLJ25832 antibody, Non-SMC element 4, S. cerevisiae, homolog of, B antibody, Non-structural maintenance of chromosomes element 4 homolog B antibody, NSE4B antibody, NSMCE4B antibody

UniProt: [Q8N140](#)

Application Details

Application Notes: ELISA:1:1000-1:2000, WB:1:200-1:1000, IHC:1:25-1:100,

Restrictions: For Research Use only

Handling

Format: Liquid

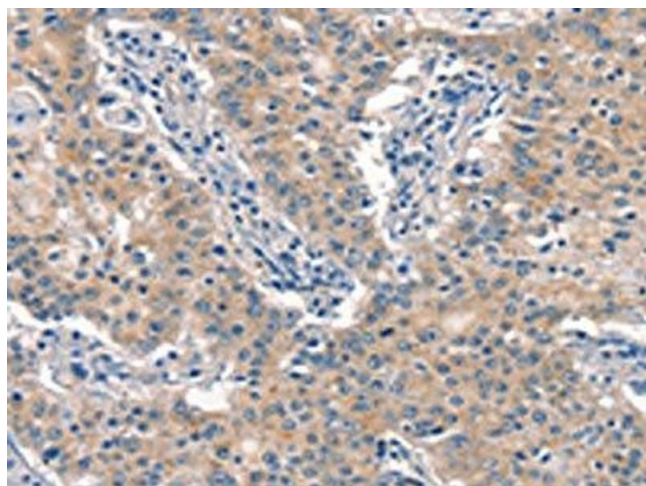
Buffer: -20 °C, pH 7.4 PBS, 0.05 % Sodium azide, 40 % Glycerol

Preservative: Sodium azide

Precaution of Use: This product contains Sodium azide: a POISONOUS AND HAZARDOUS SUBSTANCE which should be handled by trained staff only.

Storage: -20 °C,-80 °C

Storage Comment: Upon receipt, store at -20°C or -80°C. Avoid repeated freeze.



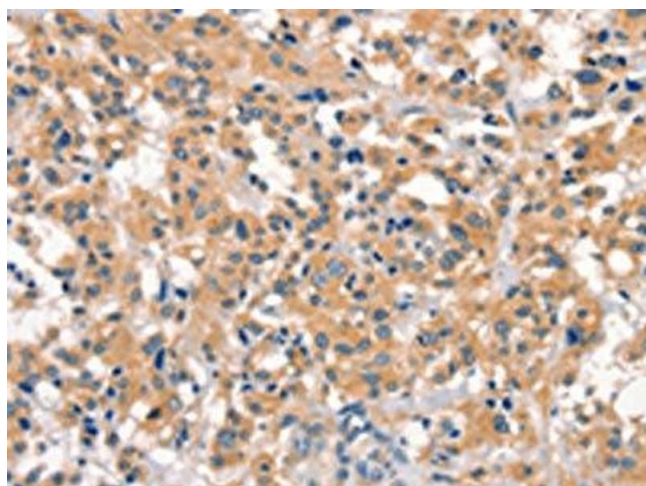
Immunohistochemistry

Image 1. The image on the left is immunohistochemistry of paraffin-embedded Human gastric cancer tissue using ABIN7190538(EID3 Antibody) at dilution 1/15, on the right is treated with synthetic peptide. (Original magnification: x200)



Western Blotting

Image 2. Gel: 8 % SDS-PAGE, Lysate: 40 µg, Lane: Mouse kidney tissue, Primary antibody: ABIN7190538(EID3 Antibody) at dilution 1/200, Secondary antibody: Goat anti rabbit IgG at 1/8000 dilution, Exposure time: 1 minute



Immunohistochemistry

Image 3. The image on the left is immunohistochemistry of paraffin-embedded Human thyroid cancer tissue using ABIN7190538(EID3 Antibody) at dilution 1/15, on the right is treated with synthetic peptide. (Original magnification: x200)