

Datasheet for ABIN7190562

anti-ENPP4 antibody**3** Images[Go to Product page](#)

Overview

Quantity:	100 µL
Target:	ENPP4
Reactivity:	Human
Host:	Rabbit
Clonality:	Polyclonal
Conjugate:	This ENPP4 antibody is un-conjugated
Application:	Western Blotting (WB), ELISA, Immunohistochemistry (IHC)

Product Details

Immunogen:	Synthetic peptide of Human ENPP4
Isotype:	IgG
Cross-Reactivity:	Human
Purification:	Antigen affinity purification

Target Details

Target:	ENPP4
Alternative Name:	ENPP4 (ENPP4 Products)
Background:	<p>Background: NPP4, also known as ENPP4 (ectonucleotide pyrophosphatase/phosphodiesterase family member 4), is a 453 amino acid single-pass type I membrane protein that belongs to the nucleotide pyrophosphatase/phosphodiesterase family.</p> <p>The gene that encodes NPP4 consists of approximately 16,736 bases and maps to human</p>

Target Details

chromosome 6p21.1. Making up nearly 6 % of the human genome, chromosome 6 contains around 1,200 genes within 170 million base pairs of sequence. Deletion of a portion of the q arm of chromosome 6 is associated with early onset intestinal cancer suggesting the presence of a cancer susceptibility locus. Porphyria cutanea tarda is associated with chromosome 6 through the HFE gene, and Stickler syndrome, 21-hydroxylase deficiency and maple syrup urine disease are also associated with genes on chromosome 6. Notably, the PARK2 gene, which is associated with Parkinson's disease, and the genes encoding the major histocompatibility complex proteins are also located on chromosome 6. A bipolar disorder susceptibility locus has been identified on the q arm of chromosome 6.

Aliases: KIAA0879 antibody, 4933413N07Rik antibody, AA986363 antibody, AI195364 antibody, E-NPP 4 antibody, Ectonucleotide pyrophosphatase/phosphodiesterase 4 (putative) antibody, Ectonucleotide pyrophosphatase/phosphodiesterase family member 4 antibody, ENPP4 antibody, ENPP4_HUMAN antibody, Gm90 antibody, mKIAA0879 antibody, NPP-4 antibody, NPP4 antibody

UniProt: [Q9Y6X5](#)

Application Details

Application Notes: ELISA:1:2000-1:5000, WB:1:500-1:2000, IHC:1:25-1:100,

Restrictions: For Research Use only

Handling

Format: Liquid

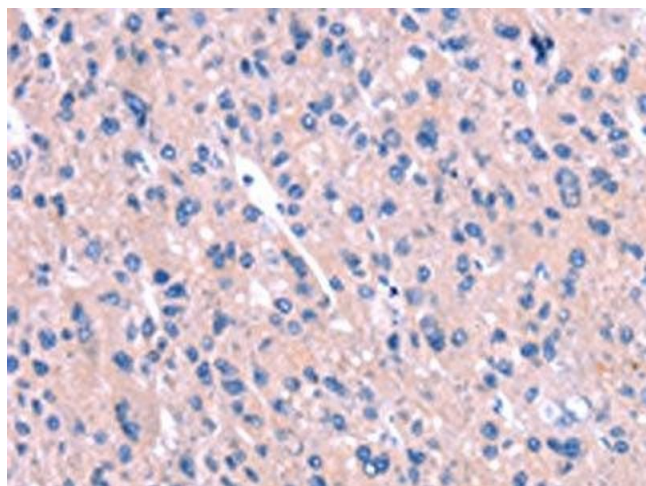
Buffer: -20 °C, pH 7.4 PBS, 0.05 % Sodium azide, 40 % Glycerol

Preservative: Sodium azide

Precaution of Use: This product contains Sodium azide: a POISONOUS AND HAZARDOUS SUBSTANCE which should be handled by trained staff only.

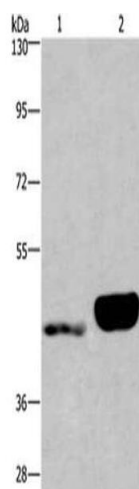
Storage: -20 °C, -80 °C

Storage Comment: Upon receipt, store at -20°C or -80°C. Avoid repeated freeze.



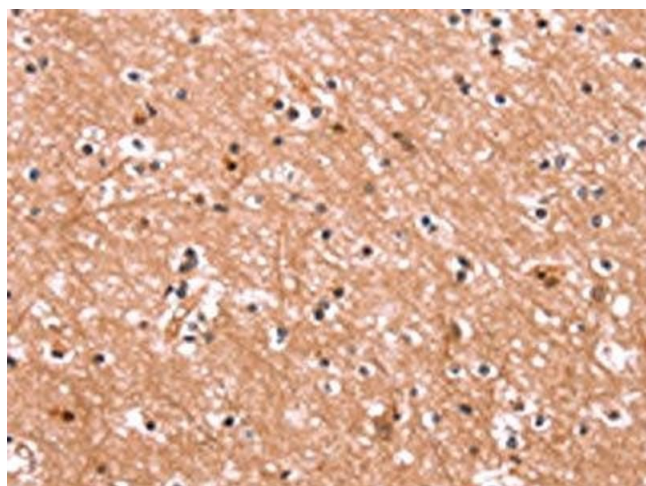
Immunohistochemistry

Image 1. The image on the left is immunohistochemistry of paraffin-embedded Human liver cancer tissue using ABIN7190562(ENPP4 Antibody) at dilution 1/15, on the right is treated with synthetic peptide. (Original magnification: x200)



Western Blotting

Image 2. Gel: 6 % SDS-PAGE, Lysate: 40 µg, Lane 1-2: Human endometrial cancer tissue, Human placenta tissue, Primary antibody: ABIN7190562(ENPP4 Antibody) at dilution 1/200, Secondary antibody: Goat anti rabbit IgG at 1/8000 dilution, Exposure time: 40 seconds



Immunohistochemistry

Image 3. The image on the left is immunohistochemistry of paraffin-embedded Human brain tissue using ABIN7190562(ENPP4 Antibody) at dilution 1/15, on the right is treated with synthetic peptide. (Original magnification: x200)