



[Go to Product page](#)

Datasheet for ABIN7190632

## anti-FAT4 antibody

### 2 Images

#### Overview

Quantity:	100 µL
Target:	FAT4
Reactivity:	Human
Host:	Rabbit
Clonality:	Polyclonal
Conjugate:	This FAT4 antibody is un-conjugated
Application:	ELISA, Immunohistochemistry (IHC)

#### Product Details

Immunogen:	Synthetic peptide of Human FAT4
Isotype:	IgG
Cross-Reactivity:	Human
Purification:	Antigen affinity purification

#### Target Details

Target:	FAT4
Alternative Name:	FAT4 ( <a href="#">FAT4 Products</a> )
Background:	Background: FAT1, FAT2, FAT3 and FAT4 are human homologs of Drosophila Fat, which is involved in tumor suppression and planar cell polarity (PCP). FAT4 undergo the first proteolytic cleavage by Furin and are predicted to undergo the second cleavage by $\gamma$ secretase to release intracellular domain (ICD). FAT4 directly interacts with MPDZ/MUPP1 to recruit membrane

## Target Details

---

associated guanylate kinase MPP5/PALS1. FAT4 is involved in the maintenance of PCP and inhibition of cell proliferation.

Aliases: Cadherin family member 14 antibody, Cadherin related family member 11 antibody, CDHF14 antibody, CDHR11 antibody, FAT atypical cadherin 4 antibody, FAT J antibody, FAT tumor suppressor homolog 4 antibody, Fat-like cadherin protein FAT-J antibody, FAT4 antibody, FAT4\_HUMAN antibody, FATJ antibody, hFat4 antibody, HKLLS2 antibody, Nbla00548 antibody, Protocadherin Fat 4 antibody, Putative protein product of Nbla00548 antibody, VMLDS2 antibody

UniProt: [Q6V0I7](#)

## Application Details

---

Application Notes: ELISA:1:2000-1:5000, IHC:1:25-1:100,

Restrictions: For Research Use only

## Handling

---

Format: Liquid

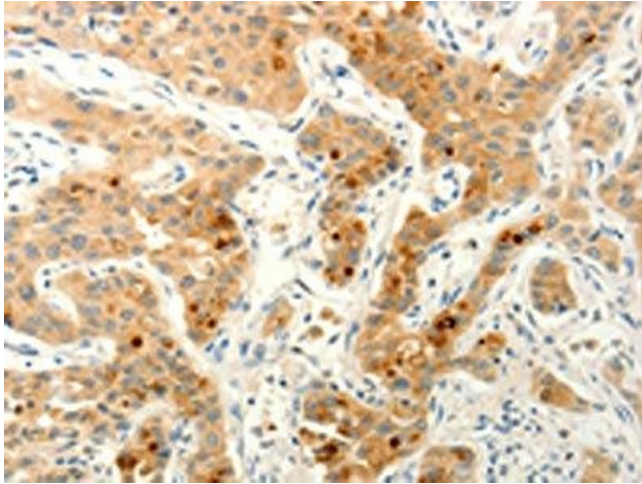
Buffer: -20 °C, pH 7.4 PBS, 0.05 % Sodium azide, 40 % Glycerol

Preservative: Sodium azide

Precaution of Use: This product contains Sodium azide: a POISONOUS AND HAZARDOUS SUBSTANCE which should be handled by trained staff only.

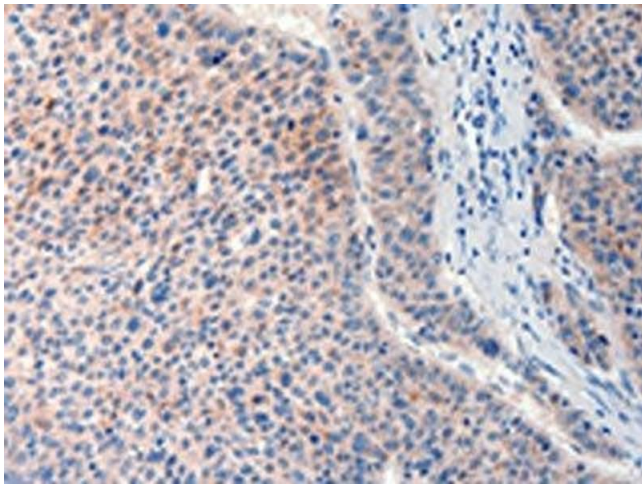
Storage: -20 °C,-80 °C

Storage Comment: Upon receipt, store at -20°C or -80°C. Avoid repeated freeze.



#### Immunohistochemistry

**Image 1.** The image on the left is immunohistochemistry of paraffin-embedded Human lung cancer tissue using ABIN7190632(FAT4 Antibody) at dilution 1/20, on the right is treated with synthetic peptide. (Original magnification: x200)



#### Immunohistochemistry

**Image 2.** The image on the left is immunohistochemistry of paraffin-embedded Human liver cancer tissue using ABIN7190632(FAT4 Antibody) at dilution 1/20, on the right is treated with synthetic peptide. (Original magnification: x200)