

Datasheet for ABIN7190640

anti-FDCSP antibody**2** Images[Go to Product page](#)

Overview

Quantity:	100 µL
Target:	FDCSP (C4orf7)
Reactivity:	Human
Host:	Rabbit
Clonality:	Polyclonal
Conjugate:	This FDCSP antibody is un-conjugated
Application:	ELISA, Immunohistochemistry (IHC)

Product Details

Immunogen:	Synthetic peptide of Human FDCSP
Isotype:	IgG
Cross-Reactivity:	Human
Purification:	Antigen affinity purification

Target Details

Target:	FDCSP (C4orf7)
Alternative Name:	FDCSP (C4orf7 Products)
Background:	Background: This gene encodes a small secreted protein that is expressed in follicular dendritic cells. This protein specifically binds to activated B cells, and functions as a regulator of antibody responses. It is also thought to contribute to tumor metastases by promoting cancer cell migration and invasion.

Target Details

Aliases: C4orf7 antibody, FDC secreted protein antibody, FDC-SP antibody, FDCSP antibody, FDSCP_HUMAN antibody, Follicular dendritic cell secreted peptide antibody, Follicular dendritic cell secreted protein antibody

UniProt: [Q8NFU4](#)

Application Details

Application Notes: ELISA:1:1000-1:2000, IHC:1:25-1:100,

Restrictions: For Research Use only

Handling

Format: Liquid

Buffer: -20 °C, pH 7.4 PBS, 0.05 % Sodium azide, 40 % Glycerol

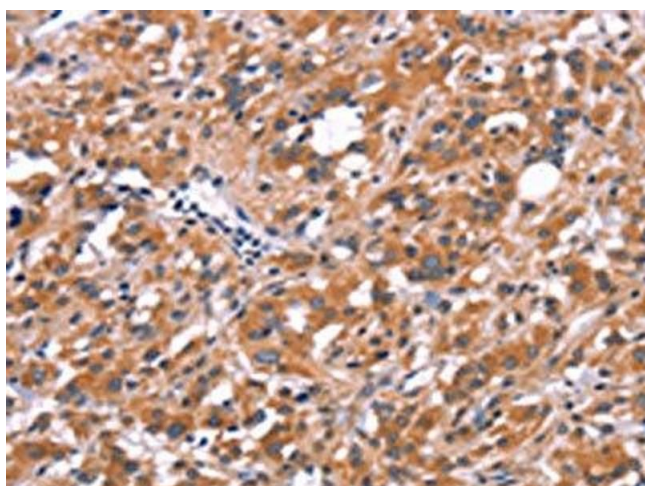
Preservative: Sodium azide

Precaution of Use: This product contains Sodium azide: a POISONOUS AND HAZARDOUS SUBSTANCE which should be handled by trained staff only.

Storage: -20 °C,-80 °C

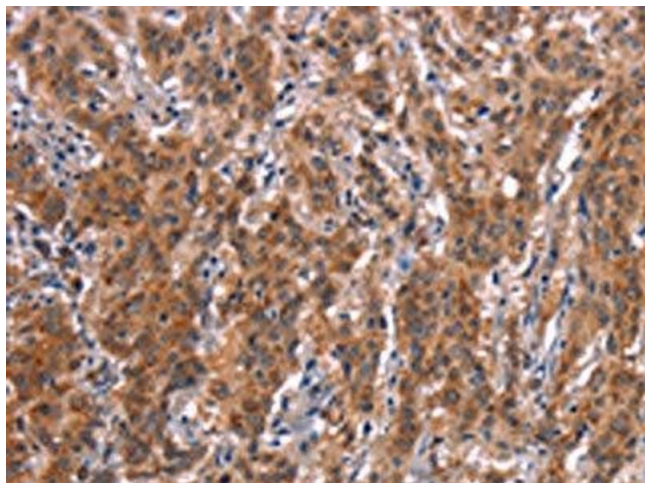
Storage Comment: Upon receipt, store at -20°C or -80°C. Avoid repeated freeze.

Images



Immunohistochemistry

Image 1. The image on the left is immunohistochemistry of paraffin-embedded Human thyroid cancer tissue using ABIN7190640(FDCSP Antibody) at dilution 1/25, on the right is treated with synthetic peptide. (Original magnification: x200)



Immunohistochemistry

Image 2. The image on the left is immunohistochemistry of paraffin-embedded Human gastric cancer tissue using ABIN7190640(FDCSP Antibody) at dilution 1/25, on the right is treated with synthetic peptide. (Original magnification: x200)