

Datasheet for ABIN7190641

anti-FEM1A antibody**2** Images[Go to Product page](#)

Overview

Quantity:	100 µL
Target:	FEM1A
Reactivity:	Human
Host:	Rabbit
Clonality:	Polyclonal
Conjugate:	This FEM1A antibody is un-conjugated
Application:	ELISA, Immunohistochemistry (IHC)

Product Details

Immunogen:	Synthetic peptide of Human FEM1A
Isotype:	IgG
Cross-Reactivity:	Human
Purification:	Antigen affinity purification

Target Details

Target:	FEM1A
Alternative Name:	FEM1A (FEM1A Products)
Background:	<p>Background: FEM1A (FEM-1 homolog a), also known as EPRAP (Prostaglandin E receptor 4-associated protein), is a 669 amino acid cytoplasmic protein that belongs to the FEM-1 family. FEM1A is present in atheromata and in macrophages derived from peripheral blood monocytes. FEM1A may be a component of an E3 ubiquitin-protein ligase complex and</p>

Target Details

functions as a substrate recognition subunit. It is suggested that FEM1A participates in anti-inflammatory signaling of macrophages via its interaction with EP4. FEM1A is down-regulated in Rhabdomyosarcoma, the most common soft tissue neoplasm of children. FEM1A is considered a candidate gene for polycystic ovary syndrome.

Aliases: AW611390 antibody, DKFZp762M136 antibody, EPRAP antibody, Fem-1 homolog a (C. elegans) antibody, Fem1 homolog a antibody, FEM1-alpha antibody, FEM1-alpha-A antibody, FEM1a antibody, FEM1a-A antibody, FEM1A_HUMAN antibody, Fem1aa antibody, Feminization 1 homolog a (C. elegans) antibody, Feminization 1 homolog a antibody, MGC114562 antibody, MGC117925 antibody, Prostaglandin E receptor 4-associated protein antibody, Protein fem-1 homolog A antibody, Protein fem-1 homolog A-A antibody

UniProt: [Q9BSK4](#)

Application Details

Application Notes: ELISA:1:1000-1:2000, IHC:1:25-1:100,

Restrictions: For Research Use only

Handling

Format: Liquid

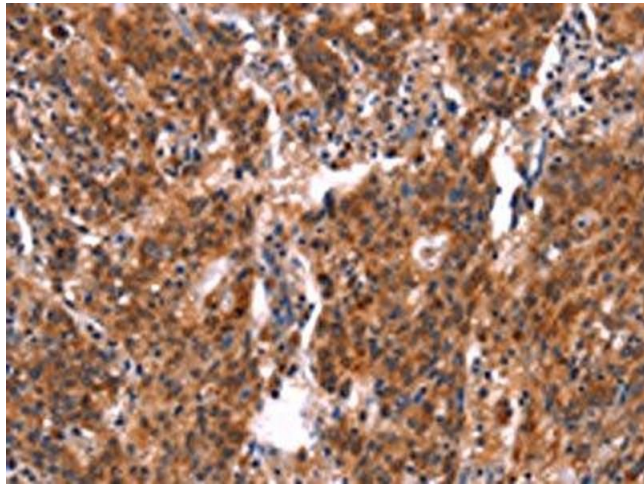
Buffer: -20 °C, pH 7.4 PBS, 0.05 % Sodium azide, 40 % Glycerol

Preservative: Sodium azide

Precaution of Use: This product contains Sodium azide: a POISONOUS AND HAZARDOUS SUBSTANCE which should be handled by trained staff only.

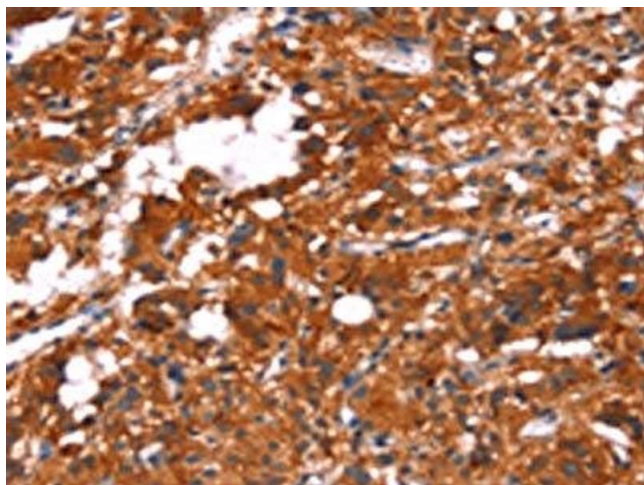
Storage: -20 °C, -80 °C

Storage Comment: Upon receipt, store at -20°C or -80°C. Avoid repeated freeze.



Immunohistochemistry

Image 1. The image on the left is immunohistochemistry of paraffin-embedded Human gastric cancer tissue using ABIN7190641(FEM1A Antibody) at dilution 1/20, on the right is treated with synthetic peptide. (Original magnification: x200)



Immunohistochemistry

Image 2. The image on the left is immunohistochemistry of paraffin-embedded Human thyroid cancer tissue using ABIN7190641(FEM1A Antibody) at dilution 1/20, on the right is treated with synthetic peptide. (Original magnification: x200)