

Datasheet for ABIN7190683

**anti-FOXD2 antibody**[Go to Product page](#)**1** Image

## Overview

Quantity:	100 µL
Target:	FOXD2
Reactivity:	Human
Host:	Rabbit
Clonality:	Polyclonal
Conjugate:	This FOXD2 antibody is un-conjugated
Application:	ELISA, Immunohistochemistry (IHC)

## Product Details

Immunogen:	Synthetic peptide of Human FOXD2
Isotype:	IgG
Cross-Reactivity:	Human, Mouse
Purification:	Antigen affinity purification

## Target Details

Target:	FOXD2
Alternative Name:	FOXD2 ( <a href="#">FOXD2 Products</a> )
Background:	Background: This gene belongs to the forkhead family of transcription factors which is characterized by a distinct forkhead domain. FOX (Forkhead box) proteins are a family of transcription factors that play important roles in regulating the expression of genes involved in cell growth, proliferation, differentiation, and longevity. Many FOX proteins are important to

## Target Details

embryonic development.

Aliases: Drosophila Forkhead Homolog Like 17 antibody, FKHL 17 antibody, Forkhead box protein D2 antibody, Forkhead Related Activator 9 antibody, Forkhead-related protein FKHL17 antibody, Forkhead-related transcription factor 9 antibody, FOXD2 antibody, FOXD2\_HUMAN antibody, FREAC 9 antibody, FREAC-9 antibody

UniProt: [O60548](#)

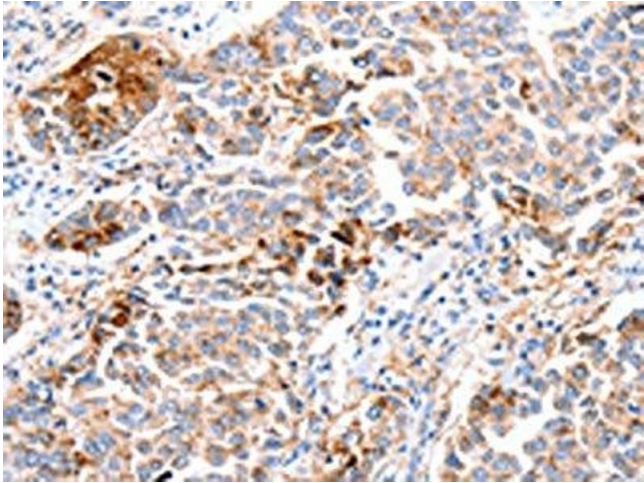
## Application Details

Application Notes:	ELISA:1:1000-1:2000, IHC:1:15-1:50,
Restrictions:	For Research Use only

## Handling

Format:	Liquid
Buffer:	-20 °C, pH 7.4 PBS, 0.05 % Sodium azide, 40 % Glycerol
Preservative:	Sodium azide
Precaution of Use:	This product contains Sodium azide: a POISONOUS AND HAZARDOUS SUBSTANCE which should be handled by trained staff only.
Storage:	-20 °C,-80 °C
Storage Comment:	Upon receipt, store at -20°C or -80°C. Avoid repeated freeze.

## Images



### Immunohistochemistry

**Image 1.** The image on the left is immunohistochemistry of paraffin-embedded Human breast cancer tissue using ABIN7190683(FOXO2 Antibody) at dilution 1/10, on the right is treated with synthetic peptide. (Original magnification: x200)