



[Go to Product page](#)

Datasheet for ABIN7190689

anti-FOXF1 antibody

2 Images

Overview

Quantity:	100 µL
Target:	FOXF1
Reactivity:	Human
Host:	Rabbit
Clonality:	Polyclonal
Conjugate:	This FOXF1 antibody is un-conjugated
Application:	ELISA, Immunohistochemistry (IHC)

Product Details

Immunogen:	Synthetic peptide of Human FOXF1
Isotype:	IgG
Cross-Reactivity:	Human, Mouse
Purification:	Antigen affinity purification

Target Details

Target:	FOXF1
Alternative Name:	FOXF1 (FOXF1 Products)
Background:	Background: This gene belongs to the forkhead family of transcription factors which is characterized by a distinct forkhead domain. The specific function of this gene has not yet been determined, however, it may play a role in the regulation of pulmonary genes as well as embryonic development.

Target Details

Aliases: AI450827 antibody, FKH L5 antibody, FKHL 5 antibody, FKHL5 antibody, Forkhead (Drosophila) like 5 antibody, Forkhead box F1 antibody, Forkhead box protein F1 antibody, Forkhead drosophila homolog like 5 antibody, Forkhead like 5 antibody, Forkhead related activator 1 antibody, Forkhead related protein FKHL5 antibody, Forkhead related transcription factor 1 antibody, Forkhead-related activator 1 antibody, Forkhead-related protein FKHL5 antibody, Forkhead-related transcription factor 1 antibody, FOX F1 antibody, FOXF 1 antibody, foxf1 antibody, FOXF1_HUMAN antibody, FREAC 1 antibody, FREAC-1 antibody, FREAC1 antibody, HFH 8 antibody, MGC105125 antibody

UniProt: [Q12946](#)

Pathways: [Regulation of Leukocyte Mediated Immunity](#), [Regulation of Muscle Cell Differentiation](#), [Positive Regulation of Immune Effector Process](#)

Application Details

Application Notes: ELISA:1:1000-1:2000, IHC:1:25-1:100,

Restrictions: For Research Use only

Handling

Format: Liquid

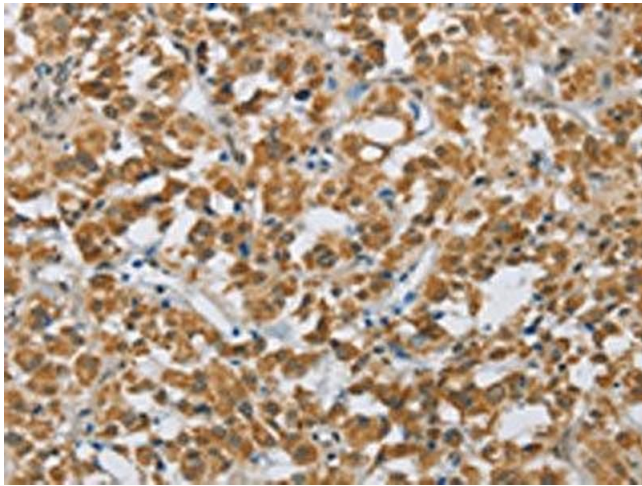
Buffer: -20 °C, pH 7.4 PBS, 0.05 % Sodium azide, 40 % Glycerol

Preservative: Sodium azide

Precaution of Use: This product contains Sodium azide: a POISONOUS AND HAZARDOUS SUBSTANCE which should be handled by trained staff only.

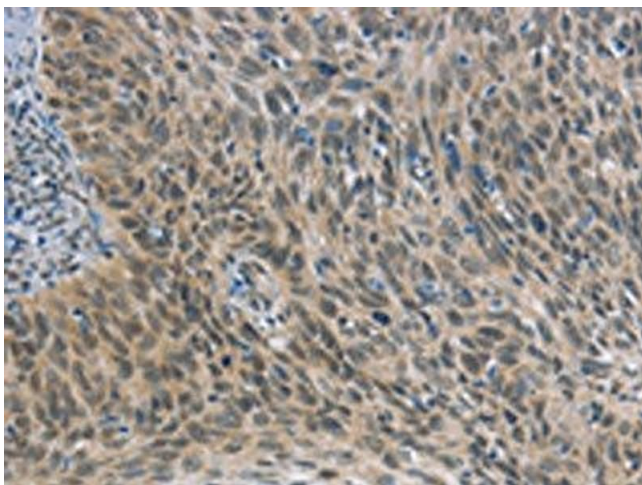
Storage: -20 °C,-80 °C

Storage Comment: Upon receipt, store at -20°C or -80°C. Avoid repeated freeze.



Immunohistochemistry

Image 1. The image on the left is immunohistochemistry of paraffin-embedded Human thyroid cancer tissue using ABIN7190689(FOXF1 Antibody) at dilution 1/25, on the right is treated with synthetic peptide. (Original magnification: x200)



Immunohistochemistry

Image 2. The image on the left is immunohistochemistry of paraffin-embedded Human cervical cancer tissue using ABIN7190689(FOXF1 Antibody) at dilution 1/25, on the right is treated with synthetic peptide. (Original magnification: x200)