



Datasheet for ABIN7190690

## anti-FOXF2 antibody



[Go to Product page](#)

### 3 Images

#### Overview

Quantity:	100 µL
Target:	FOXF2
Reactivity:	Human
Host:	Rabbit
Clonality:	Polyclonal
Conjugate:	This FOXF2 antibody is un-conjugated
Application:	ELISA, Western Blotting (WB), Immunohistochemistry (IHC)

#### Product Details

Immunogen:	Synthetic peptide of Human FOXF2
Isotype:	IgG
Cross-Reactivity:	Human, Mouse
Purification:	Antigen affinity purification

#### Target Details

Target:	FOXF2
Alternative Name:	FOXF2 ( <a href="#">FOXF2 Products</a> )
Background:	<p>Background: FOXF2 encodes forkhead box F2, one of many human homologues of the Drosophila melanogaster transcription factor forkhead. FOXF2 is expressed in lung and placenta, and has been shown to transcriptionally activate several lung-specific genes.</p> <p>Aliases: FOXF2 antibody, FKHL6 antibody, FREAC2Forkhead box protein F2 antibody, Forkhead-</p>

## Target Details

related activator 2 antibody, FREAC-2 antibody, Forkhead-related protein FKHL6 antibody, Forkhead-related transcription factor 2 antibody

UniProt: [Q12947](#)

## Application Details

Application Notes: ELISA:1:2000-1:5000, WB:1:500-1:2000, IHC:1:50-1:200,

Restrictions: For Research Use only

## Handling

Format: Liquid

Buffer: -20 °C, pH 7.4 PBS, 0.05 % Sodium azide, 40 % Glycerol

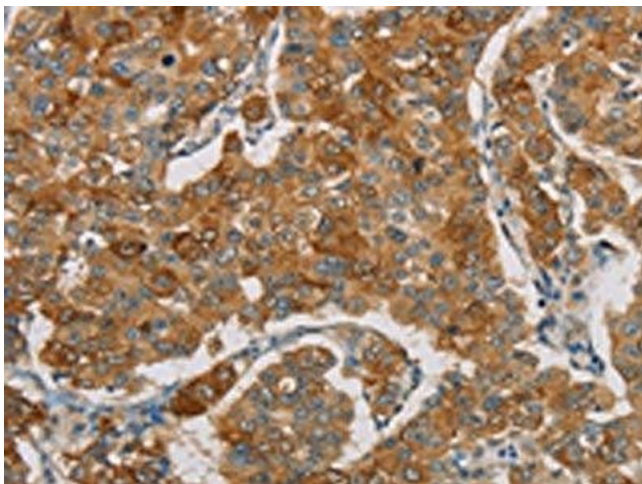
Preservative: Sodium azide

Precaution of Use: This product contains Sodium azide: a POISONOUS AND HAZARDOUS SUBSTANCE which should be handled by trained staff only.

Storage: -20 °C,-80 °C

Storage Comment: Upon receipt, store at -20°C or -80°C. Avoid repeated freeze.

## Images



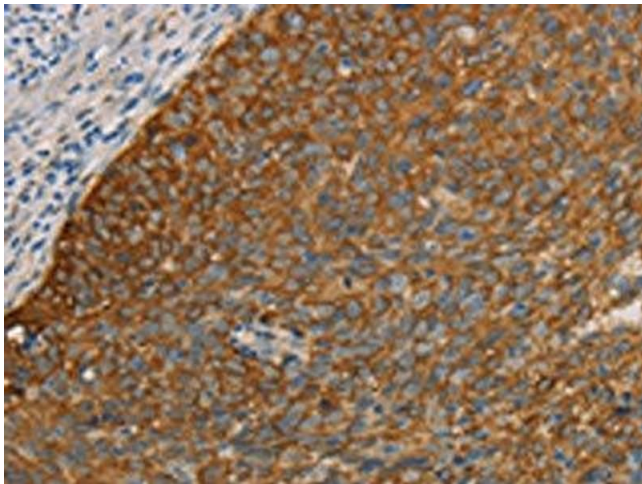
### Immunohistochemistry

**Image 1.** The image on the left is immunohistochemistry of paraffin-embedded Human breast cancer tissue using ABIN7190690(FOX2 Antibody) at dilution 1/30, on the right is treated with synthetic peptide. (Original magnification: x200)



### Western Blotting

**Image 2.** Gel: 8 % SDS-PAGE, Lysate: 40 µg, Lane 1-2: Human placenta tissue, human normal liver tissue, Primary antibody: ABIN7190690(FOXF2 Antibody) at dilution 1/666, Secondary antibody: Goat anti rabbit IgG at 1/8000 dilution, Exposure time: 5 minutes



### Immunohistochemistry

**Image 3.** The image on the left is immunohistochemistry of paraffin-embedded Human cervical cancer tissue using ABIN7190690(FOXF2 Antibody) at dilution 1/30, on the right is treated with synthetic peptide. (Original magnification: x200)