

Datasheet for ABIN7190724

**anti-FZD2 antibody**[Go to Product page](#)**1** Image

## Overview

Quantity:	100 µL
Target:	FZD2
Reactivity:	Human
Host:	Rabbit
Clonality:	Polyclonal
Conjugate:	This FZD2 antibody is un-conjugated
Application:	ELISA, Immunohistochemistry (IHC)

## Product Details

Immunogen:	Synthetic peptide of Human FZD2
Isotype:	IgG
Cross-Reactivity:	Human, Mouse, Rat
Purification:	Antigen affinity purification

## Target Details

Target:	FZD2
Alternative Name:	FZD2 ( <a href="#">FZD2 Products</a> )
Background:	Background: This intronless gene is a member of the frizzled gene family. Members of this family encode seven-transmembrane domain proteins that are receptors for the wntless type MMTV integration site family of signaling proteins. This gene encodes a protein that is coupled to the beta-catenin canonical signaling pathway. Competition between the wntless-type MMTV

## Target Details

integration site family, member 3A and wingless-type MMTV integration site family, member 5A  
gene products for binding of this protein is thought to regulate the beta-catenin-dependent and  
-independent pathways.

Aliases: Frizzled homolog 2 antibody, Frizzled-2 antibody, Frizzled2 antibody, Fz 2 antibody, Fz-  
2 antibody, Fz2 antibody, FZD 2 antibody, FZD2 antibody, FZD2\_HUMAN antibody, FzE 2  
antibody, FzE2 antibody, hFz 2 antibody, hFz2 antibody, Mfz10 antibody

UniProt: [Q14332](#)

Pathways: [WNT Signaling](#)

## Application Details

Application Notes: ELISA:1:1000-1:5000, IHC:1:25-1:100,

Restrictions: For Research Use only

## Handling

Format: Liquid

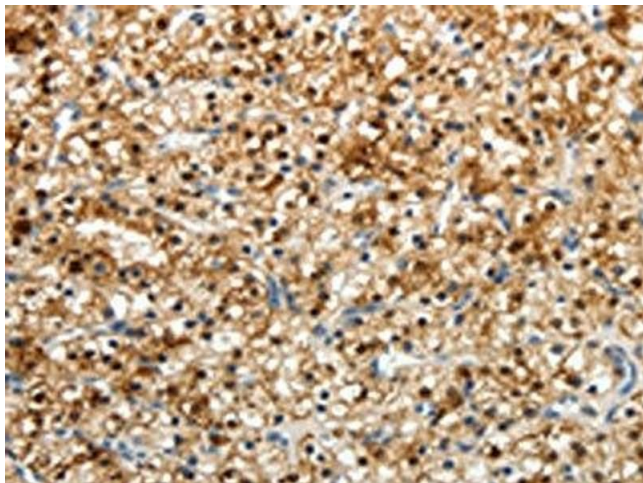
Buffer: -20 °C, pH 7.4 PBS, 0.05 % Sodium azide, 40 % Glycerol

Preservative: Sodium azide

Precaution of Use: This product contains Sodium azide: a POISONOUS AND HAZARDOUS SUBSTANCE which  
should be handled by trained staff only.

Storage: -20 °C, -80 °C

Storage Comment: Upon receipt, store at -20°C or -80°C. Avoid repeated freeze.



#### Immunohistochemistry

**Image 1.** The image on the left is immunohistochemistry of paraffin-embedded Human renal cancer tissue using ABIN7190724(FZD2 Antibody) at dilution 1/25, on the right is treated with synthetic peptide. (Original magnification: x200)