

Datasheet for ABIN7190739  
**anti-G Antigen 12I antibody**

## 3 Images

[Go to Product page](#)

## Overview

Quantity:	100 µL
Target:	G Antigen 12I (GAGE12I)
Reactivity:	Human
Host:	Rabbit
Clonality:	Polyclonal
Conjugate:	This G Antigen 12I antibody is un-conjugated
Application:	Immunohistochemistry (IHC), ELISA, Western Blotting (WB)

## Product Details

Immunogen:	Synthetic peptide of Human GAGE12I
Isotype:	IgG
Cross-Reactivity:	Human
Purification:	Antigen affinity purification

## Target Details

Target:	G Antigen 12I (GAGE12I)
Alternative Name:	GAGE12I ( <a href="#">GAGE12I Products</a> )
Background:	Background: This gene belongs to a family of genes that are expressed in a variety of tumors but not in normal tissues, except for the testis. The sequences of the family members are highly related but differ by scattered nucleotide substitutions. The antigenic peptide YYWPRPRRY, which is also encoded by several other family members, is recognized by autologous cytolytic T

## Target Details

lymphocytes.

Aliases: GAGE12IG antigen 12I antibody, GAGE-12I antibody

UniProt: [P0CL82](#)

## Application Details

Application Notes: ELISA:1:1000-1:2000, WB:1:200-1:1000, IHC:1:50-1:200,

Restrictions: For Research Use only

## Handling

Format: Liquid

Buffer: -20 °C, pH 7.4 PBS, 0.05 % Sodium azide, 40 % Glycerol

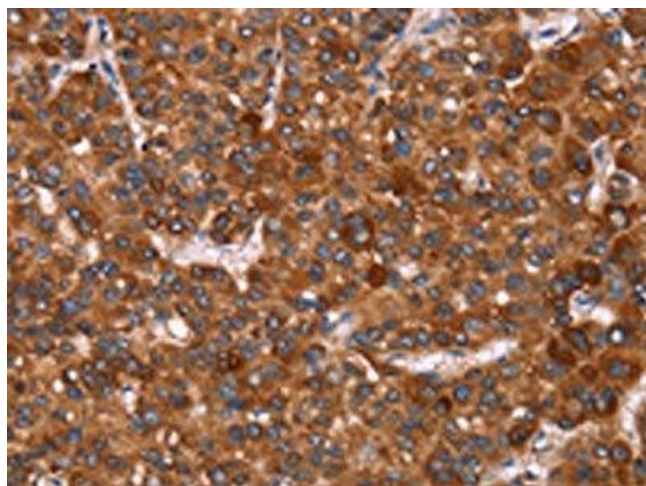
Preservative: Sodium azide

Precaution of Use: This product contains Sodium azide: a POISONOUS AND HAZARDOUS SUBSTANCE which should be handled by trained staff only.

Storage: -20 °C,-80 °C

Storage Comment: Upon receipt, store at -20°C or -80°C. Avoid repeated freeze.

## Images



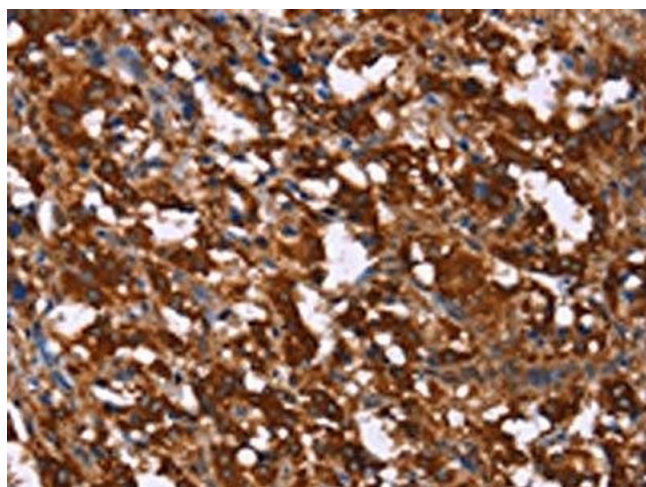
### Immunohistochemistry

**Image 1.** The image on the left is immunohistochemistry of paraffin-embedded Human liver cancer tissue using ABIN7190739(GAGE12I Antibody) at dilution 1/20, on the right is treated with synthetic peptide. (Original magnification: x200)



### Western Blotting

**Image 2.** Gel: 10 % SDS-PAGE, Lysate: 40 µg, Lane: K562 cells, Primary antibody: ABIN7190739(GAGE12I Antibody) at dilution 1/200, Secondary antibody: Goat anti rabbit IgG at 1/8000 dilution, Exposure time: 20 seconds



### Immunohistochemistry

**Image 3.** The image on the left is immunohistochemistry of paraffin-embedded Human thyroid cancer tissue using ABIN7190739(GAGE12I Antibody) at dilution 1/20, on the right is treated with synthetic peptide. (Original magnification: x200)