

Datasheet for ABIN7190766

**anti-GCH1 antibody**

## 2 Images

[Go to Product page](#)

## Overview

Quantity:	100 µL
Target:	GCH1
Reactivity:	Human
Host:	Rabbit
Clonality:	Polyclonal
Conjugate:	This GCH1 antibody is un-conjugated
Application:	Western Blotting (WB), ELISA, Immunohistochemistry (IHC)

## Product Details

Immunogen:	Synthetic peptide of Human GCH1
Isotype:	IgG
Cross-Reactivity:	Human
Purification:	Antigen affinity purification

## Target Details

Target:	GCH1
Alternative Name:	GCH1 ( <a href="#">GCH1 Products</a> )
Background:	Background: This gene encodes a member of the GTP cyclohydrolase family. The encoded protein is the first and rate-limiting enzyme in tetrahydrobiopterin (BH4) biosynthesis, catalyzing the conversion of GTP into 7,8-dihydroneopterin triphosphate. BH4 is an essential cofactor required by aromatic amino acid hydroxylases as well as nitric oxide synthases. Mutations in

## Target Details

this gene are associated with malignant hyperphenylalaninemia and dopa-responsive dystonia. Several alternatively spliced transcript variants encoding different isoforms have been described, however, not all variants give rise to a functional enzyme.

Aliases: dystonia 14 antibody, DYT 5 antibody, DYT14 antibody, DYT5 antibody, DYT5a antibody, GCH 1 antibody, GCH antibody, Gch1 antibody, GCH1\_HUMAN antibody, GTP CH 1 antibody, GTP CH I antibody, GTP cyclohydrolase 1 (dopa responsive dystonia) antibody, GTP cyclohydrolase 1 antibody, GTP cyclohydrolase I antibody, GTP-CH-I antibody, GTPCH 1 antibody, GTPCH1 antibody, Guanosine 5' triphosphate cyclohydrolase I antibody, HPABH4B antibody

UniProt: [P30793](#)

## Application Details

Application Notes: ELISA:1:1000-1:2000, WB:1:200-1:1000, IHC:1:5-1:20,

Restrictions: For Research Use only

## Handling

Format: Liquid

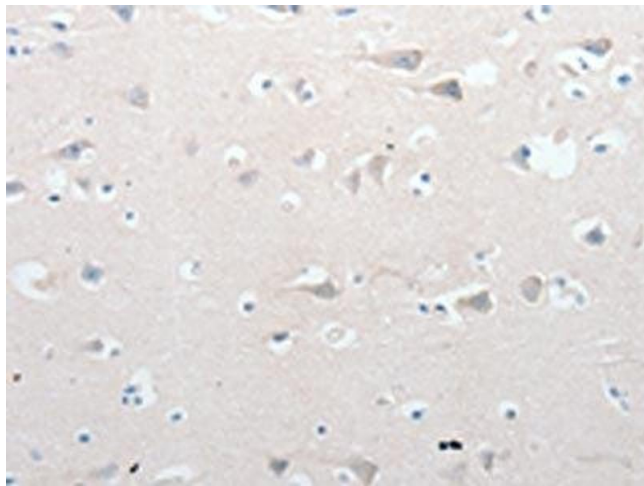
Buffer: -20 °C, pH 7.4 PBS, 0.05 % Sodium azide, 40 % Glycerol

Preservative: Sodium azide

Precaution of Use: This product contains Sodium azide: a POISONOUS AND HAZARDOUS SUBSTANCE which should be handled by trained staff only.

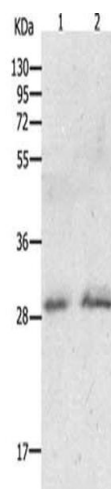
Storage: -20 °C,-80 °C

Storage Comment: Upon receipt, store at -20°C or -80°C. Avoid repeated freeze.



#### Immunohistochemistry

**Image 1.** The image on the left is immunohistochemistry of paraffin-embedded Human brain tissue using ABIN7190766(GCH1 Antibody) at dilution 1/15, on the right is treated with synthetic peptide. (Original magnification: x200)



#### Western Blotting

**Image 2.** Gel: 12 % SDS-PAGE, Lysate: 60 µg, Lane 1-2: Human fetal liver tissue, HeLa cells, Primary antibody: ABIN7190766(GCH1 Antibody) at dilution 1/200, Secondary antibody: Goat anti rabbit IgG at 1/8000 dilution, Exposure time: 15 minutes