

Datasheet for ABIN7190790

anti-GFRA4 antibody**3** Images[Go to Product page](#)

Overview

Quantity:	100 µL
Target:	GFRA4
Reactivity:	Human
Host:	Rabbit
Clonality:	Polyclonal
Conjugate:	This GFRA4 antibody is un-conjugated
Application:	Western Blotting (WB), ELISA, Immunohistochemistry (IHC)

Product Details

Immunogen:	Synthetic peptide of Human GFRA4
Isotype:	IgG
Cross-Reactivity:	Human
Purification:	Antigen affinity purification

Target Details

Target:	GFRA4
Alternative Name:	GFRA4 (GFRA4 Products)
Background:	Background: The protein encoded by this gene is a member of the GDNF receptor family. It is a glycosylphosphatidylinositol(GPI)-linked cell surface receptor for persephin, and mediates activation of the RET tyrosine kinase receptor. This gene is a candidate gene for RET-associated diseases. Alternatively spliced transcript variants encoding different isoforms have

Target Details

been described for this gene.

Aliases: GDNF family receptor alpha 4 antibody, GDNF family receptor alpha-4 antibody, GDNF receptor alpha-4 antibody, GDNFR-alpha-4 antibody, GFR alpha 4 antibody, GFR receptor alpha 4 antibody, GFR-alpha-4 antibody, GFRA4 antibody, GFRA4_HUMAN antibody, Glial cell line derived neurotrophic factor family receptor alpha 4 antibody, Neurotrophic factor receptor splice variant A (Gfra4 gene) antibody, OTTHUMP00000030106 antibody, OTTHUMP00000030107 antibody, Persephin receptor antibody

UniProt: [Q9GZZ7](#)

Application Details

Application Notes: ELISA:1:2000-1:5000, WB:1:500-1:2000, IHC:1:25-1:100,

Restrictions: For Research Use only

Handling

Format: Liquid

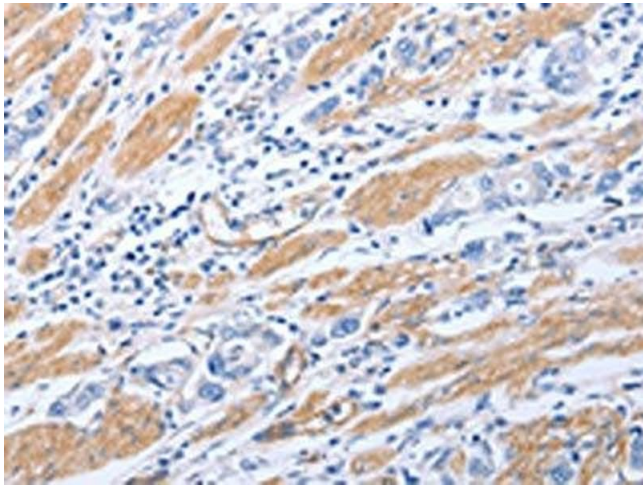
Buffer: -20 °C, pH 7.4 PBS, 0.05 % Sodium azide, 40 % Glycerol

Preservative: Sodium azide

Precaution of Use: This product contains Sodium azide: a POISONOUS AND HAZARDOUS SUBSTANCE which should be handled by trained staff only.

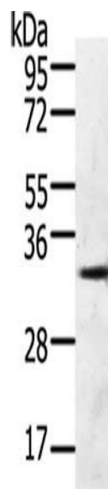
Storage: -20 °C, -80 °C

Storage Comment: Upon receipt, store at -20°C or -80°C. Avoid repeated freeze.



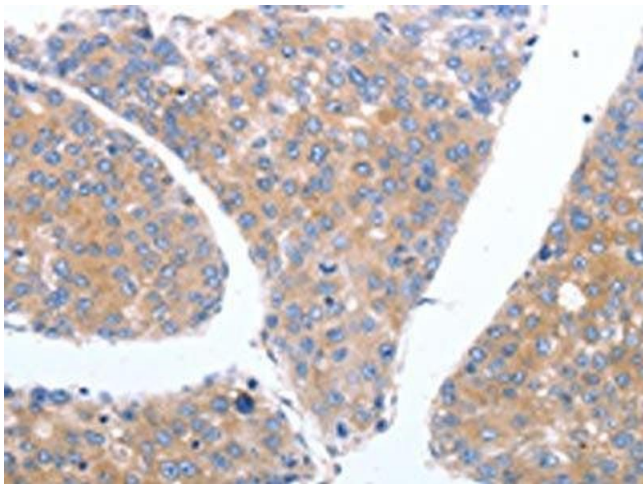
Immunohistochemistry

Image 1. The image on the left is immunohistochemistry of paraffin-embedded Human gastric cancer tissue using ABIN7190790(GFRA4 Antibody) at dilution 1/40, on the right is treated with synthetic peptide. (Original magnification: x200)



Western Blotting

Image 2. Gel: 10 % SDS-PAGE, Lysate: 60 µg, Lane: 293T cells, Primary antibody: ABIN7190790(GFRA4 Antibody) at dilution 1/600, Secondary antibody: Goat anti rabbit IgG at 1/8000 dilution, Exposure time: 30 seconds



Immunohistochemistry

Image 3. The image on the left is immunohistochemistry of paraffin-embedded Human breast cancer tissue using ABIN7190790(GFRA4 Antibody) at dilution 1/40, on the right is treated with synthetic peptide. (Original magnification: x200)