

Datasheet for ABIN7190883

anti-Metabotropic Glutamate Receptor 1 antibody**3** Images[Go to Product page](#)

Overview

Quantity:	100 µL
Target:	Metabotropic Glutamate Receptor 1 (GRM1)
Reactivity:	Human
Host:	Rabbit
Clonality:	Polyclonal
Conjugate:	This Metabotropic Glutamate Receptor 1 antibody is un-conjugated
Application:	Western Blotting (WB), ELISA, Immunohistochemistry (IHC)

Product Details

Immunogen:	Synthetic peptide of Human GRM1
Isotype:	IgG
Cross-Reactivity:	Human, Mouse, Rat
Purification:	Antigen affinity purification

Target Details

Target:	Metabotropic Glutamate Receptor 1 (GRM1)
Alternative Name:	GRM1 (GRM1 Products)
Background:	Background: L-glutamate is the major excitatory neurotransmitter in the central nervous system and activates both ionotropic and metabotropic glutamate receptors. Glutamatergic neurotransmission is involved in most aspects of normal brain function and can be perturbed in many neuropathologic conditions. The metabotropic glutamate receptors are a family of G

Target Details

protein-coupled receptors, that have been divided into 3 groups on the basis of sequence homology, putative signal transduction mechanisms, and pharmacologic properties. Group I includes GRM1 and GRM5 and these receptors have been shown to activate phospholipase C. Group II includes GRM2 and GRM3 while Group III includes GRM4, GRM6, GRM7 and GRM8. Group II and III receptors are linked to the inhibition of the cyclic AMP cascade but differ in their agonist selectivities. The canonical alpha isoform of the metabotropic glutamate receptor 1 gene is a disulfide-linked homodimer whose activity is mediated by a G-protein-coupled phosphatidylinositol-calcium second messenger system. Alternative splicing results in multiple transcript variants encoding distinct isoforms, some of which may have distinct functions. Aliases: Glutamate receptor metabotropic 1 antibody, glutamate receptor, metabotropic 1 antibody, GPRC1A antibody, GRM1 antibody, GRM1-Alpha antibody, GRM1_HUMAN antibody, GRM1A antibody, Metabotropic glutamate receptor 1 antibody, mGlu1 antibody, mGluR1 antibody, MGLUR1-Alpha antibody, MGLUR1A antibody, SCAR13 antibody

UniProt: [Q13255](#)

Application Details

Application Notes: ELISA:1:1000-1:5000, WB:1:500-1:2000, IHC:1:15-1:50,

Restrictions: For Research Use only

Handling

Format: Liquid

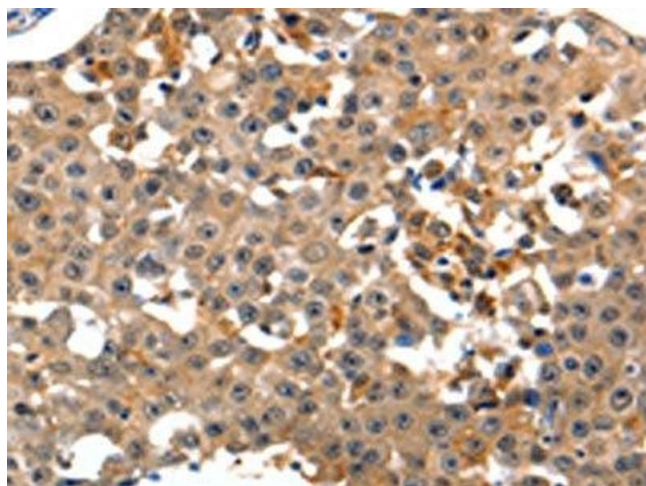
Buffer: -20 °C, pH 7.4 PBS, 0.05 % Sodium azide, 40 % Glycerol

Preservative: Sodium azide

Precaution of Use: This product contains Sodium azide: a POISONOUS AND HAZARDOUS SUBSTANCE which should be handled by trained staff only.

Storage: -20 °C, -80 °C

Storage Comment: Upon receipt, store at -20°C or -80°C. Avoid repeated freeze.



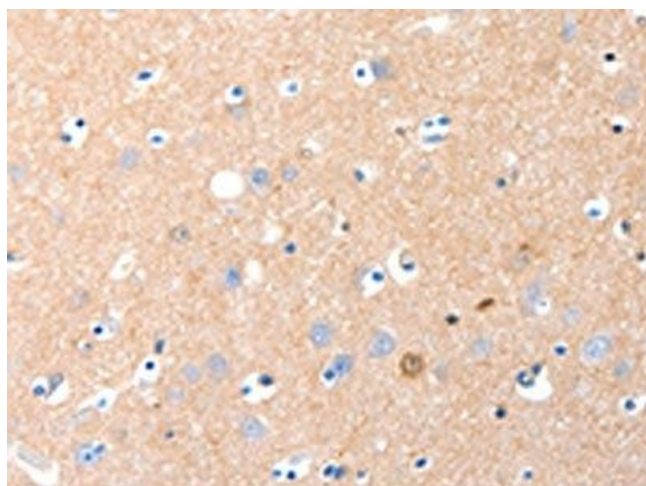
Immunohistochemistry

Image 1. The image on the left is immunohistochemistry of paraffin-embedded Human breast cancer tissue using ABIN7190883 (GRM1 Antibody) at dilution 1/15, on the right is treated with synthetic peptide. (Original magnification: x200)



Western Blotting

Image 2. Gel: 8 % SDS-PAGE, Lysate: 60 µg, Lane: Hela cells, Primary antibody: ABIN7190883 (GRM1 Antibody) at dilution 1/125, Secondary antibody: Goat anti rabbit IgG at 1/8000 dilution, Exposure time: 1 minute



Immunohistochemistry

Image 3. The image on the left is immunohistochemistry of paraffin-embedded Human brain tissue using ABIN7190883 (GRM1 Antibody) at dilution 1/15, on the right is treated with synthetic peptide. (Original magnification: x200)