



[Go to Product page](#)

Datasheet for ABIN7190935

anti-HES1 antibody

2 Images

Overview

Quantity:	100 µL
Target:	HES1
Reactivity:	Human
Host:	Rabbit
Clonality:	Polyclonal
Conjugate:	This HES1 antibody is un-conjugated
Application:	ELISA, Immunohistochemistry (IHC)

Product Details

Immunogen:	Synthetic peptide of Human HES1
Isotype:	IgG
Cross-Reactivity:	Human, Mouse, Rat
Purification:	Antigen affinity purification

Target Details

Target:	HES1
Alternative Name:	HES1 (HES1 Products)
Background:	Background: This protein belongs to the basic helix-loop-helix family of transcription factors. It is a transcriptional repressor of genes that require a bHLH protein for their transcription. The protein has a particular type of basic domain that contains a helix interrupting protein that binds to the N-box rather than the canonical E-box.

Target Details

Aliases: bHLHb39 antibody, C-HAIRY1 antibody, c-hairy1A antibody, Class B basic helix-loop-helix protein 39 antibody, FLJ20408 antibody, Hairy and enhancer of split 1 (Drosophila) antibody, Hairy and enhancer of split 1 antibody, Hairy homolog (Drosophila) antibody, Hairy homolog antibody, Hairy like antibody, Hairy, Drosophila, homolog of antibody, Hairy-like protein antibody, Hairy/enhancer of split, Drosophila, homolog of, 1 antibody, HAIRY1 antibody, HES-1 antibody, hes1 antibody, Hes1 hairy and enhancer of split 1 (Drosophila) antibody, HES1_HUMAN antibody, HHL antibody, HL antibody, HRY antibody, MGC129109 antibody, OTTHUMP00000209031 antibody, RHL antibody, Transcription factor HES-1 antibody

UniProt: [Q14469](#)

Pathways: [DNA Damage Repair](#)

Application Details

Application Notes: Recommended dilution: IHC:1:10-1:50,

Restrictions: For Research Use only

Handling

Format: Liquid

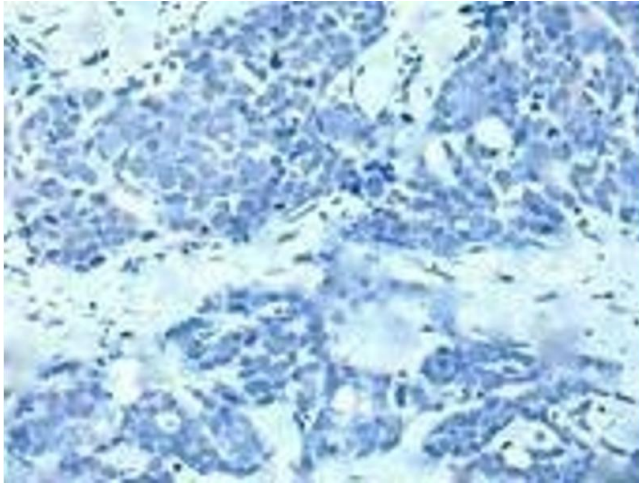
Buffer: -20 °C, pH 7.4 PBS, 0.05 % Sodium azide, 40 % Glycerol

Preservative: Sodium azide

Precaution of Use: This product contains Sodium azide: a POISONOUS AND HAZARDOUS SUBSTANCE which should be handled by trained staff only.

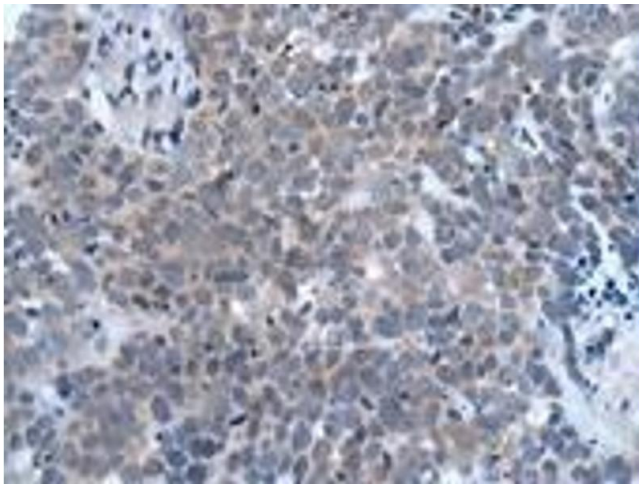
Storage: -20 °C,-80 °C

Storage Comment: Upon receipt, store at -20°C or -80°C. Avoid repeated freeze.



Immunohistochemistry

Image 1. Immunohistochemistry of paraffin-embedded human thyroid cancer (treated with synthetic peptide) using ABIN7190935 at dilution of 1:20



Immunohistochemistry

Image 2. Immunohistochemistry of paraffin-embedded human thyroid cancer using ABIN7190935 at dilution of 1:20