

Datasheet for ABIN7190953  
**anti-HIST1H2AB antibody**

## 3 Images

[Go to Product page](#)

## Overview

Quantity:	100 µL
Target:	HIST1H2AB
Reactivity:	Human
Host:	Rabbit
Clonality:	Polyclonal
Conjugate:	This HIST1H2AB antibody is un-conjugated
Application:	ELISA, Western Blotting (WB), Immunohistochemistry (IHC)

## Product Details

Immunogen:	Synthetic peptide of Human HIST1H2AB
Isotype:	IgG
Cross-Reactivity:	Human, Mouse
Purification:	Antigen affinity purification

## Target Details

Target:	HIST1H2AB
Alternative Name:	HIST1H2AB ( <a href="#">HIST1H2AB Products</a> )
Background:	Background: Histones are basic nuclear proteins that are responsible for the nucleosome structure of the chromosomal fiber in eukaryotes. This structure consists of approximately 146 bp of DNA wrapped around a nucleosome, an octamer composed of pairs of each of the four core histones (H2A, H2B, H3, and H4). The chromatin fiber is further compacted through the

## Target Details

interaction of a linker histone, H1, with the DNA between the nucleosomes to form higher order chromatin structures. This gene is intronless and encodes a member of the histone H2A family. Transcripts from this gene lack polyA tails, instead, they contain a palindromic termination element. This gene is found in the large histone gene cluster on chromosome 6p22-p21.3.

Aliases: H2a 615 antibody, H2A antibody, H2A GL101 antibody, H2A histone family member A antibody, H2A.1 antibody, H2A.2 antibody, H2A/a antibody, H2A/m antibody, H2A/O antibody, H2A/q antibody, H2A1B\_HUMAN antibody, H2AFA antibody, H2AFE antibody, H2AFL antibody, H2AFM antibody, H2AFO antibody, H2AFQ antibody, HIST1H2AE antibody, HIST1H2AJ antibody, HIST2H2AA antibody, HIST2H2AA3 antibody, HIST2H2AB antibody, HIST2H2AC antibody, Histone 1 H2ae antibody, Histone 2 H2aa3 antibody, Histone 2 H2ab antibody, Histone 2 H2ac antibody, Histone H2A type 1 B antibody, Histone H2A type 1 C antibody, Histone H2A type 1 E antibody, Histone H2A type 1 J antibody, Histone H2A type 1-B/E antibody, Histone H2A.2 antibody, Histone H2A/a antibody, Histone H2A/m antibody, MGC74460 antibody

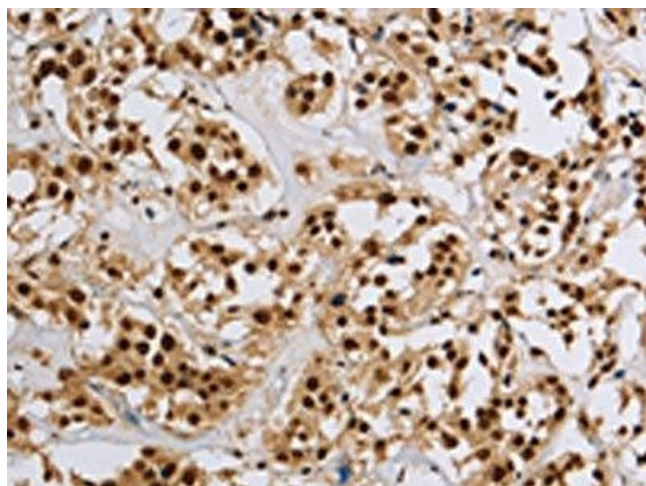
UniProt:	<a href="#">P04908</a>
Pathways:	<a href="#">Telomere Maintenance</a>

## Application Details

Application Notes:	ELISA:1:1000-1:2000, WB:1:200-1:1000, IHC:1:50-1:200,
Restrictions:	For Research Use only

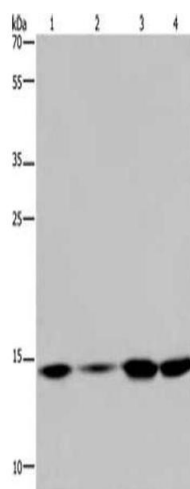
## Handling

Format:	Liquid
Buffer:	-20 °C, pH 7.4 PBS, 0.05 % Sodium azide, 40 % Glycerol
Preservative:	Sodium azide
Precaution of Use:	This product contains Sodium azide: a POISONOUS AND HAZARDOUS SUBSTANCE which should be handled by trained staff only.
Storage:	-20 °C,-80 °C
Storage Comment:	Upon receipt, store at -20°C or -80°C. Avoid repeated freeze.



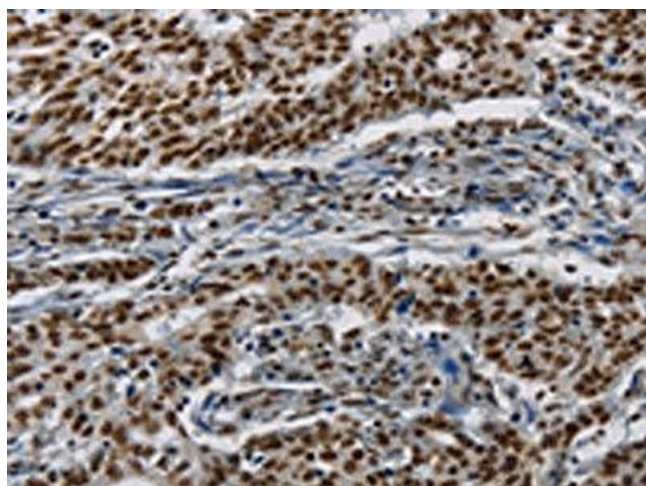
#### Immunohistochemistry

**Image 1.** The image on the left is immunohistochemistry of paraffin-embedded Human thyroid cancer tissue using ABIN7190953(HIST1H2AB Antibody) at dilution 1/20, on the right is treated with synthetic peptide. (Original magnification: x200)



#### Western Blotting

**Image 2.** Gel: 10 % SDS-PAGE, Lysate: 40 µg, Lane 1-4: Hela cells, 231 cells, K562 cells, human fetal brain tissue, Primary antibody: ABIN7190953(HIST1H2AB Antibody) at dilution 1/200, Secondary antibody: Goat anti rabbit IgG at 1/8000 dilution, Exposure time: 5 minutes



#### Immunohistochemistry

**Image 3.** The image on the left is immunohistochemistry of paraffin-embedded Human gastric cancer tissue using ABIN7190953(HIST1H2AB Antibody) at dilution 1/20, on the right is treated with synthetic peptide. (Original magnification: x200)