



[Go to Product page](#)

Datasheet for ABIN7191000
anti-HRASLS2 antibody

3 Images

Overview

Quantity:	100 µL
Target:	HRASLS2
Reactivity:	Human
Host:	Rabbit
Clonality:	Polyclonal
Conjugate:	This HRASLS2 antibody is un-conjugated
Application:	ELISA, Immunohistochemistry (IHC), Western Blotting (WB)

Product Details

Immunogen:	Synthetic peptide of Human HRASLS2
Isotype:	IgG
Cross-Reactivity:	Human, Mouse
Purification:	Antigen affinity purification

Target Details

Target:	HRASLS2
Alternative Name:	HRASLS2 (HRASLS2 Products)
Background:	Background: HRASLS2 (HRAS-like suppressor 2), also known as PLA1/2-2, is a 162 amino acid Cytoplasmic protein that belongs to the H-rev107 family. Expressed in liver, kidney, small intestine and colon, HRASLS2 exhibits PLA1/2 activity by catalyzing the calcium-independent hydrolysis of acyl groups in various phosphatidylcholines (PCs) and phosphatidylethanolamine

Target Details

(PE).

Aliases: PLAAT2 antibody, HRASLS2 antibody, Phospholipase A and acyltransferase 2 antibody, EC 2.3.1.- antibody, EC 3.1.1.32 antibody, EC 3.1.1.4 antibody, HRAS-like suppressor 2 antibody

UniProt: [Q9NWW9](#)

Application Details

Application Notes: ELISA:1:2000-1:10000, WB:1:200-1:1000, IHC:1:100-1:300,

Restrictions: For Research Use only

Handling

Format: Liquid

Buffer: -20 °C, pH 7.4 PBS, 0.05 % Sodium azide, 40 % Glycerol

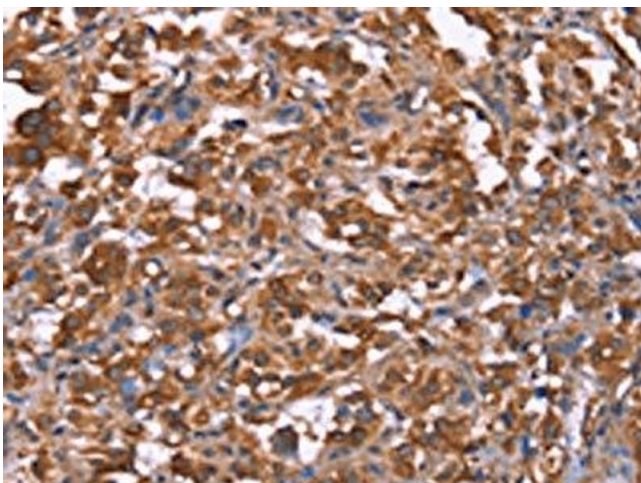
Preservative: Sodium azide

Precaution of Use: This product contains Sodium azide: a POISONOUS AND HAZARDOUS SUBSTANCE which should be handled by trained staff only.

Storage: -20 °C,-80 °C

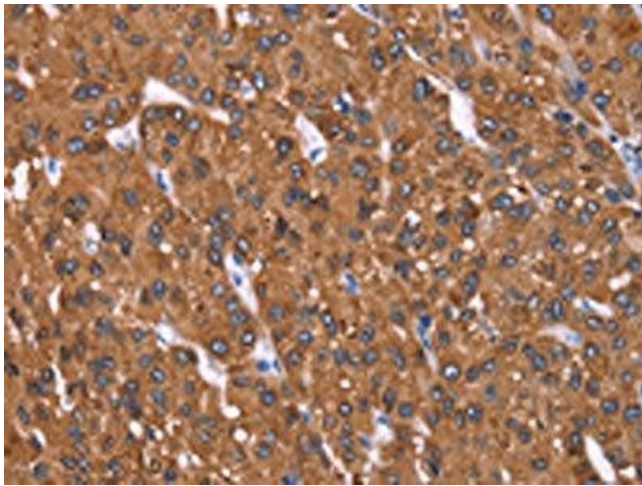
Storage Comment: Upon receipt, store at -20°C or -80°C. Avoid repeated freeze.

Images



Immunohistochemistry

Image 1. The image on the left is immunohistochemistry of paraffin-embedded Human thyroid cancer tissue using ABIN7191000(HRASLS2 Antibody) at dilution 1/40, on the right is treated with synthetic peptide. (Original magnification: x200)



Immunohistochemistry

Image 2. The image on the left is immunohistochemistry of paraffin-embedded Human liver cancer tissue using ABIN7191000(HRASLS2 Antibody) at dilution 1/40, on the right is treated with synthetic peptide. (Original magnification: x200)



Western Blotting

Image 3. Gel: 10 % SDS-PAGE, Lysate: 40 µg, Lane 1-3: Mouse kidney tissue, Mouse liver tissue, human fetal liver tissue, Primary antibody: ABIN7191000(HRASLS2 Antibody) at dilution 1/362.5, Secondary antibody: Goat anti rabbit IgG at 1/8000 dilution, Exposure time: 40 seconds