

Datasheet for ABIN7191086

anti-IL-31 antibody**2** Images[Go to Product page](#)

Overview

Quantity:	100 µL
Target:	IL-31 (IL31)
Reactivity:	Human
Host:	Rabbit
Clonality:	Polyclonal
Conjugate:	This IL-31 antibody is un-conjugated
Application:	Immunohistochemistry (IHC), ELISA

Product Details

Immunogen:	Synthetic peptide of Human IL31
Isotype:	IgG
Cross-Reactivity:	Human
Purification:	Antigen affinity purification

Target Details

Target:	IL-31 (IL31)
Alternative Name:	IL31 (IL31 Products)
Background:	Background: IL31, which is made principally by activated Th2-type T cells, interacts with a heterodimeric receptor consisting of IL31RA (MIM 609510) and OSMR (MIM 601743) that is constitutively expressed on epithelial cells and keratinocytes. IL31 may be involved in the promotion of allergic skin disorders and in regulating other allergic diseases, such as asthma

Target Details

Aliases: IL 31 antibody, IL-31 antibody, IL31 antibody, IL31_HUMAN antibody, Interleukin 31 antibody, Interleukin-31 antibody

UniProt: [Q6EBC2](#)

Application Details

Application Notes: ELISA:1:2000-1:5000, IHC:1:50-1:200,

Restrictions: For Research Use only

Handling

Format: Liquid

Buffer: -20 °C, pH 7.4 PBS, 0.05 % Sodium azide, 40 % Glycerol

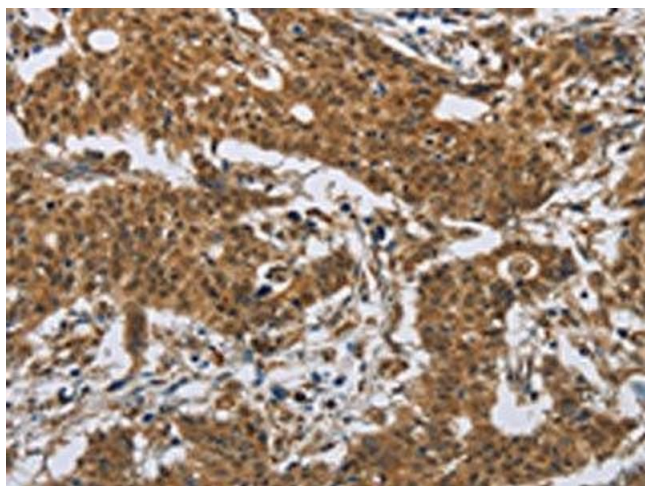
Preservative: Sodium azide

Precaution of Use: This product contains Sodium azide: a POISONOUS AND HAZARDOUS SUBSTANCE which should be handled by trained staff only.

Storage: -20 °C, -80 °C

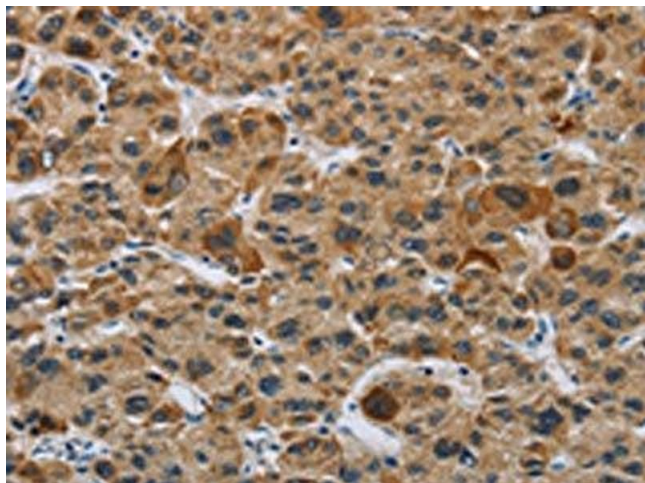
Storage Comment: Upon receipt, store at -20°C or -80°C. Avoid repeated freeze.

Images



Immunohistochemistry

Image 1. The image on the left is immunohistochemistry of paraffin-embedded Human gastric cancer tissue using ABIN7191086(IL31 Antibody) at dilution 1/20, on the right is treated with synthetic peptide. (Original magnification: X200)



Immunohistochemistry

Image 2. The image on the left is immunohistochemistry of paraffin-embedded Human liver cancer tissue using ABIN7191086(IL31 Antibody) at dilution 1/20, on the right is treated with synthetic peptide. (Original magnification: X200)