

Datasheet for ABIN7191092

anti-IMPAD1 antibody**2** Images[Go to Product page](#)

Overview

Quantity:	100 µL
Target:	IMPAD1
Reactivity:	Human
Host:	Rabbit
Clonality:	Polyclonal
Conjugate:	This IMPAD1 antibody is un-conjugated
Application:	ELISA, Immunohistochemistry (IHC)

Product Details

Immunogen:	Synthetic peptide of Human IMPAD1
Isotype:	IgG
Cross-Reactivity:	Human, Mouse, Rat
Purification:	Antigen affinity purification

Target Details

Target:	IMPAD1
Alternative Name:	IMPAD1 (IMPAD1 Products)
Background:	Background: This gene encodes a member of the inositol monophosphatase family. The encoded protein is localized to the Golgi apparatus and catalyzes the hydrolysis of phosphoadenosine phosphate (PAP) to adenosine monophosphate (AMP). Mutations in this gene are a cause of GRAPP type chondrodysplasia with joint dislocations, and a pseudogene of

Target Details

this gene is located on the long arm of chromosome 1.

Aliases: IMPAD1 antibody, IMPA3 antibody, Golgi-resident adenosine 3',5'-bisphosphate 3'-phosphatase antibody, Golgi-resident PAP phosphatase antibody, gPAPP antibody, EC 3.1.3.7 antibody, Inositol monophosphatase domain-containing protein 1 antibody, Myo-inositol monophosphatase A3 antibody, Phosphoadenosine phosphate 3'-nucleotidase antibody

UniProt: [Q9NX62](#)

Pathways: [Glycosaminoglycan Metabolic Process](#)

Application Details

Application Notes: ELISA:1:1000-1:2000, IHC:1:25-1:100,

Restrictions: For Research Use only

Handling

Format: Liquid

Buffer: -20 °C, pH 7.4 PBS, 0.05 % Sodium azide, 40 % Glycerol

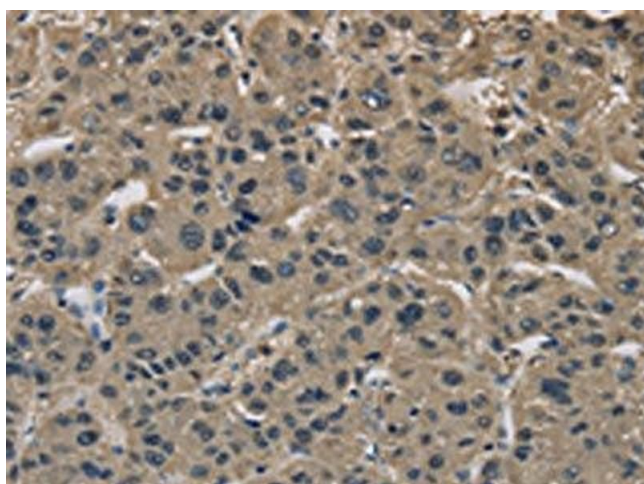
Preservative: Sodium azide

Precaution of Use: This product contains Sodium azide: a POISONOUS AND HAZARDOUS SUBSTANCE which should be handled by trained staff only.

Storage: -20 °C,-80 °C

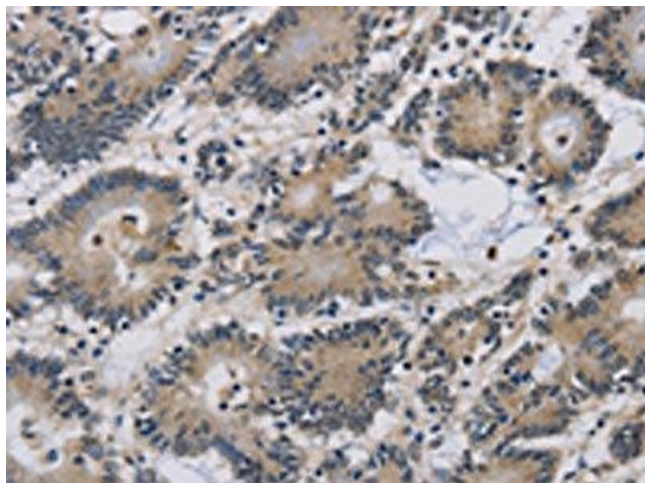
Storage Comment: Upon receipt, store at -20°C or -80°C. Avoid repeated freeze.

Images



Immunohistochemistry

Image 1. The image on the left is immunohistochemistry of paraffin-embedded Human liver cancer tissue using ABIN7191092(IMPAD1 Antibody) at dilution 1/20, on the right is treated with synthetic peptide. (Original magnification: x200)



Immunohistochemistry

Image 2. The image on the left is immunohistochemistry of paraffin-embedded Human colon cancer tissue using ABIN7191092(IMPAD1 Antibody) at dilution 1/20, on the right is treated with synthetic peptide. (Original magnification: x200)