

Datasheet for ABIN7191127

anti-ITGA11 antibody

3 Images

[Go to Product page](#)

Overview

Quantity:	100 µL
Target:	ITGA11
Reactivity:	Human
Host:	Rabbit
Clonality:	Polyclonal
Conjugate:	This ITGA11 antibody is un-conjugated
Application:	Western Blotting (WB), ELISA, Immunohistochemistry (IHC)

Product Details

Immunogen:	Synthetic peptide of Human ITGA11
Isotype:	IgG
Cross-Reactivity:	Human, Mouse
Purification:	Antigen affinity purification

Target Details

Target:	ITGA11
Alternative Name:	ITGA11 (ITGA11 Products)
Background:	Background: This gene encodes an alpha integrin. Integrins are heterodimeric integral membrane proteins composed of an alpha chain and a beta chain. This protein contains an I domain, is expressed in muscle tissue, dimerizes with beta 1 integrin in vitro, and appears to bind collagen in this form. Therefore, the protein may be involved in attaching muscle tissue to

Target Details

the extracellular matrix. Alternative transcriptional splice variants have been found for this gene, but their biological validity is not determined.

Aliases: integrin a11 antibody, Integrin alpha 11 antibody, Integrin alpha-11 antibody, ITA11_HUMAN antibody, ITGA11 antibody

UniProt: [Q9UKX5](#)

Pathways: [Integrin Complex](#)

Application Details

Application Notes: ELISA:1:1000-1:2000, WB:1:200-1:1000, IHC:1:50-1:200,

Restrictions: For Research Use only

Handling

Format: Liquid

Buffer: -20 °C, pH 7.4 PBS, 0.05 % Sodium azide, 40 % Glycerol

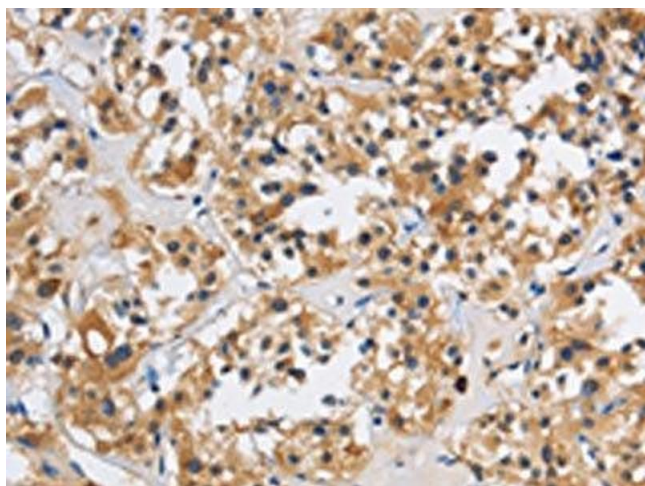
Preservative: Sodium azide

Precaution of Use: This product contains Sodium azide: a POISONOUS AND HAZARDOUS SUBSTANCE which should be handled by trained staff only.

Storage: -20 °C, -80 °C

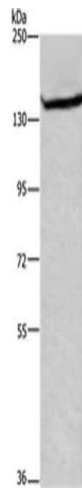
Storage Comment: Upon receipt, store at -20°C or -80°C. Avoid repeated freeze.

Images



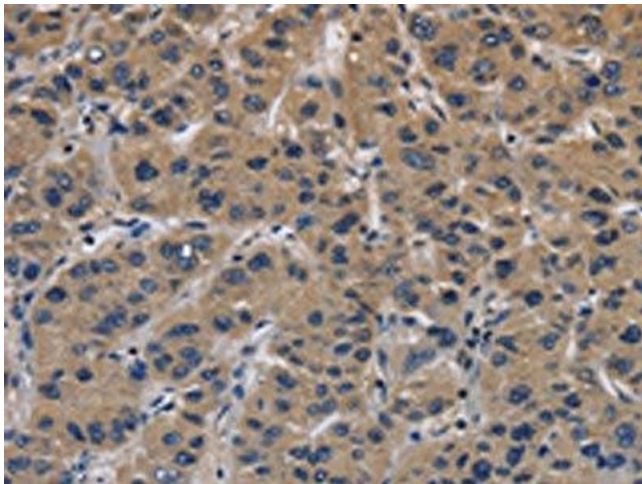
Immunohistochemistry

Image 1. The image on the left is immunohistochemistry of paraffin-embedded Human thyroid cancer tissue using ABIN7191127(ITGA11 Antibody) at dilution 1/40, on the right is treated with synthetic peptide. (Original magnification: x200)



Western Blotting

Image 2. Gel: 6 % SDS-PAGE, Lysate: 40 µg, Lane: Mouse skeletal muscle tissue, Primary antibody: ABIN7191127(ITGA11 Antibody) at dilution 1/200, Secondary antibody: Goat anti rabbit IgG at 1/8000 dilution, Exposure time: 3 minutes



Immunohistochemistry

Image 3. The image on the left is immunohistochemistry of paraffin-embedded Human liver cancer tissue using ABIN7191127(ITGA11 Antibody) at dilution 1/40, on the right is treated with synthetic peptide. (Original magnification: x200)