

Datasheet for ABIN7191184

anti-KCNJ15 antibody**3** Images[Go to Product page](#)

Overview

Quantity:	100 µL
Target:	KCNJ15
Reactivity:	Human
Host:	Rabbit
Clonality:	Polyclonal
Conjugate:	This KCNJ15 antibody is un-conjugated
Application:	Western Blotting (WB), ELISA, Immunohistochemistry (IHC)

Product Details

Immunogen:	Synthetic peptide of Human KCNJ15
Isotype:	IgG
Cross-Reactivity:	Human, Mouse, Rat
Purification:	Antigen affinity purification

Target Details

Target:	KCNJ15
Alternative Name:	KCNJ15 (KCNJ15 Products)
Background:	Background: Potassium channels are present in most mammalian cells, where they participate in a wide range of physiologic responses. The protein encoded by this gene is an integral membrane protein and inward-rectifier type potassium channel. The encoded protein has a greater tendency to allow potassium to flow into a cell rather than out of a cell. Eight transcript

Target Details

variants encoding the same protein have been found for this gene.

Aliases: ATP sensitive inward rectifier potassium channel 15 antibody, ATP-sensitive inward rectifier potassium channel 15 antibody, Inward rectifier K(+) channel Kir1.3 antibody, Inward rectifier K(+) channel Kir4.2 antibody, Inward rectifier K+ channel KIR4.2 antibody, inwardly rectifying subfamily J member 15 antibody, IRK15_HUMAN antibody, IRKK antibody, KCNJ 14 antibody, KCNJ 15 antibody, KCNJ14 antibody, Kcnj15 antibody, KIR1.3 antibody, KIR4.2 antibody, MGC13584 antibody, Potassium channel antibody, Potassium channel inwardly rectifying subfamily J member 15 antibody, Potassium inwardly rectifying channel J15 antibody, Potassium inwardly rectifying channel subfamily J member 15 antibody, Potassium voltage gated channel subfamily J member 15 antibody

UniProt: [Q99712](#)

Application Details

Application Notes: ELISA:1:2000-1:5000, WB:1:500-1:2000, IHC:1:25-1:100,

Restrictions: For Research Use only

Handling

Format: Liquid

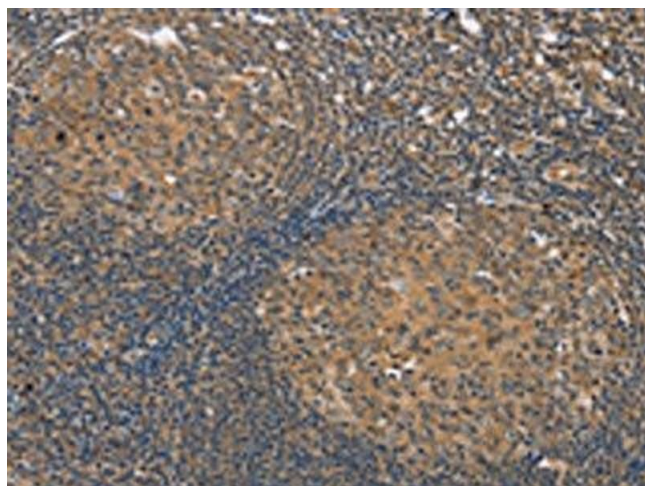
Buffer: -20 °C, pH 7.4 PBS, 0.05 % Sodium azide, 40 % Glycerol

Preservative: Sodium azide

Precaution of Use: This product contains Sodium azide: a POISONOUS AND HAZARDOUS SUBSTANCE which should be handled by trained staff only.

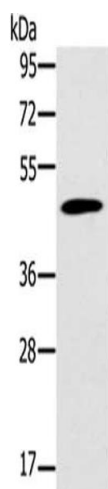
Storage: -20 °C, -80 °C

Storage Comment: Upon receipt, store at -20°C or -80°C. Avoid repeated freeze.



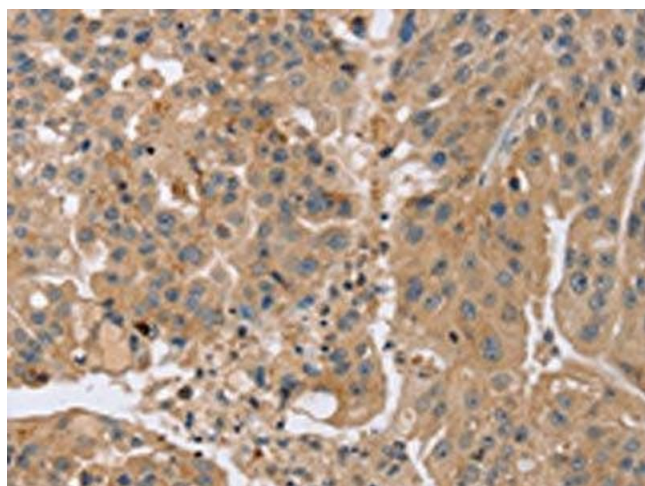
Immunohistochemistry

Image 1. The image on the left is immunohistochemistry of paraffin-embedded Human tonsil tissue using ABIN7191184(KCNJ15 Antibody) at dilution 1/35, on the right is treated with synthetic peptide. (Original magnification: x200)



Western Blotting

Image 2. Gel: 8 % SDS-PAGE, Lysate: 40 µg, Lane: Mouse pancreas tissue, Primary antibody: ABIN7191184(KCNJ15 Antibody) at dilution 1/200, Secondary antibody: Goat anti rabbit IgG at 1/8000 dilution, Exposure time: 30 seconds



Immunohistochemistry

Image 3. The image on the left is immunohistochemistry of paraffin-embedded Human breast cancer tissue using ABIN7191184(KCNJ15 Antibody) at dilution 1/35, on the right is treated with synthetic peptide. (Original magnification: x200)