

Datasheet for ABIN7191189

anti-KCNK3 antibody**2** Images[Go to Product page](#)

Overview

Quantity:	100 µL
Target:	KCNK3
Reactivity:	Mouse
Host:	Rabbit
Clonality:	Polyclonal
Conjugate:	This KCNK3 antibody is un-conjugated
Application:	Western Blotting (WB), Immunohistochemistry (IHC), ELISA

Product Details

Immunogen:	Synthetic peptide of Human KCNK3
Isotype:	IgG
Cross-Reactivity:	Human, Mouse, Rat
Purification:	Antigen affinity purification

Target Details

Target:	KCNK3
Alternative Name:	Kcnk3 (KCNK3 Products)
Background:	Background: This gene encodes a member of the superfamily of potassium channel proteins that contain two pore-forming P domains. The encoded protein is an outwardly rectifying channel that is sensitive to changes in extracellular pH and is inhibited by extracellular acidification. Also referred to as an acid-sensitive potassium channel, it is activated by the

Target Details

anesthetics halothane and isoflurane. Although three transcripts are detected in northern blots, there is currently no sequence available to confirm transcript variants for this gene.

Aliases: Kcnk3 antibody, Ctba1 antibody, Task antibody, Task1 antibody, Potassium channel subfamily K member 3 antibody, Acid-sensitive potassium channel protein TASK-1 antibody, Cardiac two pore background K(+) channel antibody, TWIK-related acid-sensitive K(+) channel 1 antibody, Two pore potassium channel KT3.1 antibody, Two pore K(+) channel KT3.1 antibody, cTBAK-1 antibody

UniProt: [O35111](#)

Application Details

Application Notes: ELISA:1:2000-1:5000, WB:1:500-1:2000, IHC:1:10-1:50,

Restrictions: For Research Use only

Handling

Format: Liquid

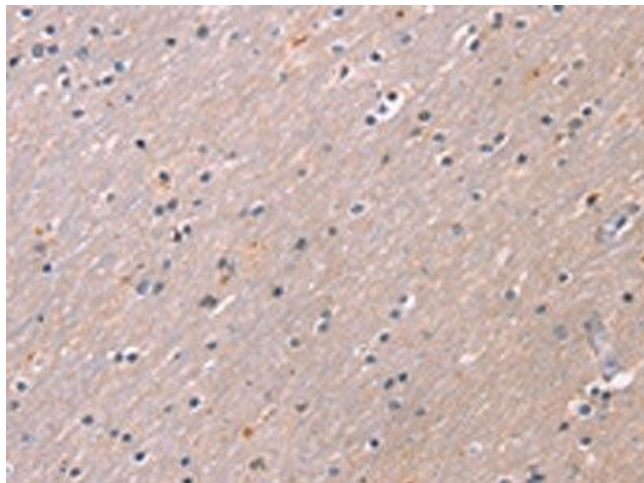
Buffer: -20 °C, pH 7.4 PBS, 0.05 % Sodium azide, 40 % Glycerol

Preservative: Sodium azide

Precaution of Use: This product contains Sodium azide: a POISONOUS AND HAZARDOUS SUBSTANCE which should be handled by trained staff only.

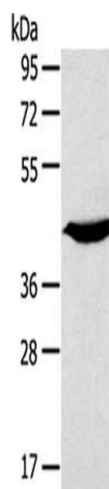
Storage: -20 °C, -80 °C

Storage Comment: Upon receipt, store at -20°C or -80°C. Avoid repeated freeze.



Immunohistochemistry

Image 1. The image on the left is immunohistochemistry of paraffin-embedded Human brain tissue using ABIN7191189(KCNK3 Antibody) at dilution 1/20, on the right is treated with synthetic peptide. (Original magnification: x200)



Western Blotting

Image 2. Gel: 8 % SDS-PAGE, Lysate: 40 µg, Lane: Mouse heart tissue, Primary antibody: ABIN7191189(KCNK3 Antibody) at dilution 1/200, Secondary antibody: Goat anti rabbit IgG at 1/8000 dilution, Exposure time: 10 seconds