



[Go to Product page](#)

Datasheet for ABIN7191225

anti-KLHL8 antibody

3 Images

Overview

Quantity:	100 µL
Target:	KLHL8
Reactivity:	Human
Host:	Rabbit
Clonality:	Polyclonal
Conjugate:	This KLHL8 antibody is un-conjugated
Application:	Western Blotting (WB), ELISA, Immunohistochemistry (IHC)

Product Details

Immunogen:	Synthetic peptide of Human KLHL8
Isotype:	IgG
Cross-Reactivity:	Human
Purification:	Antigen affinity purification

Target Details

Target:	KLHL8
Alternative Name:	KLHL8 (KLHL8 Products)
Background:	<p>Background: Kelch-like protein 8 is a protein that in humans is encoded by the KLHL8 gene.</p> <p>Substrate-specific adapter of a BCR (BTB-CUL3-RBX1) E3 ubiquitin ligase complex required for</p> <p>The BCR(KLHL8) ubiquitin ligase complex mediates ubiquitination and degradation of RAPSN.</p> <p>Aliases: KLHL8 antibody, KIAA1378Kelch-like protein 8 antibody</p>

Target Details

UniProt: [Q9P2G9](#)

Application Details

Application Notes: ELISA:1:2000-1:5000, WB:1:200-1:1000, IHC:1:50-1:200,

Restrictions: For Research Use only

Handling

Format: Liquid

Buffer: -20 °C, pH 7.4 PBS, 0.05 % Sodium azide, 40 % Glycerol

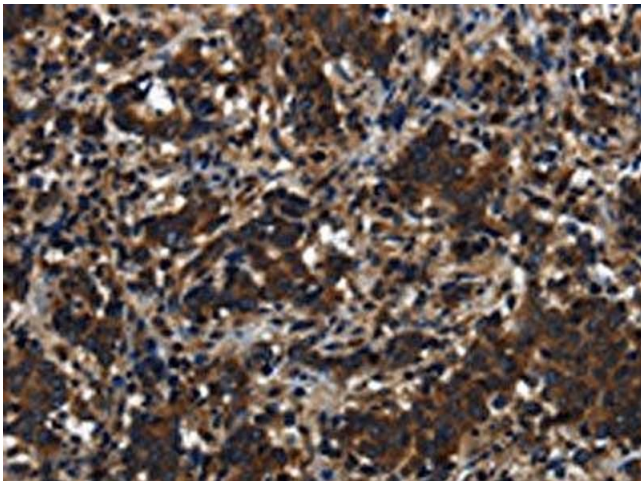
Preservative: Sodium azide

Precaution of Use: This product contains Sodium azide: a POISONOUS AND HAZARDOUS SUBSTANCE which should be handled by trained staff only.

Storage: -20 °C,-80 °C

Storage Comment: Upon receipt, store at -20°C or -80°C. Avoid repeated freeze.

Images



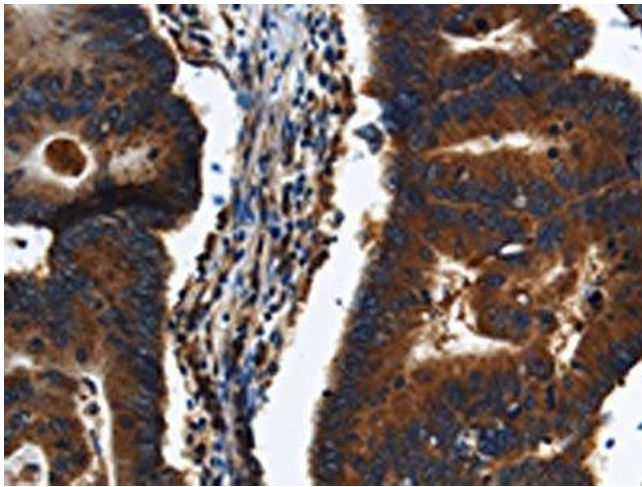
Immunohistochemistry

Image 1. The image on the left is immunohistochemistry of paraffin-embedded Human liver cancer tissue using ABIN7191225(KLHL8 Antibody) at dilution 1/20, on the right is treated with synthetic peptide. (Original magnification: x200)



Western Blotting

Image 2. Gel: 8 % SDS-PAGE, Lysate: 40 µg, Lane: Human placenta tissue, Primary antibody: ABIN7191225(KLHL8 Antibody) at dilution 1/200, Secondary antibody: Goat anti rabbit IgG at 1/8000 dilution, Exposure time: 10 seconds



Immunohistochemistry

Image 3. The image on the left is immunohistochemistry of paraffin-embedded Human colon cancer tissue using ABIN7191225(KLHL8 Antibody) at dilution 1/20, on the right is treated with synthetic peptide. (Original magnification: x200)