

Datasheet for ABIN7191253

**anti-LAIR2 antibody**

3 Images

[Go to Product page](#)

## Overview

Quantity:	100 µL
Target:	LAIR2
Reactivity:	Human
Host:	Rabbit
Clonality:	Polyclonal
Conjugate:	This LAIR2 antibody is un-conjugated
Application:	Western Blotting (WB), ELISA, Immunohistochemistry (IHC)

## Product Details

Immunogen:	Synthetic peptide of Human LAIR2
Isotype:	IgG
Cross-Reactivity:	Human, Mouse
Purification:	Antigen affinity purification

## Target Details

Target:	LAIR2
Alternative Name:	LAIR2 ( <a href="#">LAIR2 Products</a> )
Background:	Background: The protein encoded by this gene is a member of the immunoglobulin superfamily. It was identified by its similarity to leukocyte-associated immunoglobulin-like receptor 1, a membrane-bound receptor that modulates innate immune response. The protein encoded by this locus is a soluble receptor that may play roles in both inhibition of collagen-induced platelet

## Target Details

aggregation and vessel formation during placental implantation. This gene maps to a region of 19q13.4, termed the leukocyte receptor cluster, which contains 29 genes in the immunoglobulin superfamily.

Aliases: CD306 antibody, CD306 antigen antibody, LAIR 2 antibody, LAIR-2 antibody, LAIR2 antibody, LAIR2\_HUMAN antibody, Leukocyte associated Ig like receptor 2 antibody, Leukocyte associated immunoglobulin like receptor 2 antibody, Leukocyte-associated immunoglobulin-like receptor 2 antibody, MGC71634 antibody, OTTHUMP00000068389 antibody, OTTHUMP00000068390 antibody

UniProt: [Q6ISS4](#)

## Application Details

Application Notes: ELISA:1:1000-1:2000, WB:1:200-1:1000, IHC:1:25-1:100,

Restrictions: For Research Use only

## Handling

Format: Liquid

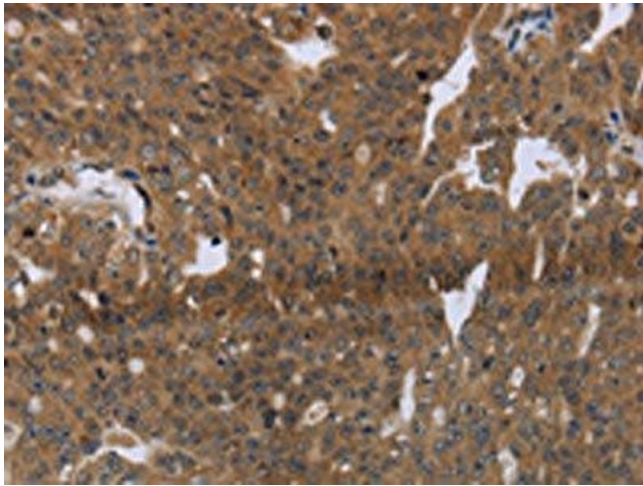
Buffer: -20 °C, pH 7.4 PBS, 0.05 % Sodium azide, 40 % Glycerol

Preservative: Sodium azide

Precaution of Use: This product contains Sodium azide: a POISONOUS AND HAZARDOUS SUBSTANCE which should be handled by trained staff only.

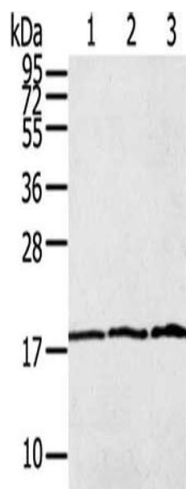
Storage: -20 °C, -80 °C

Storage Comment: Upon receipt, store at -20°C or -80°C. Avoid repeated freeze.



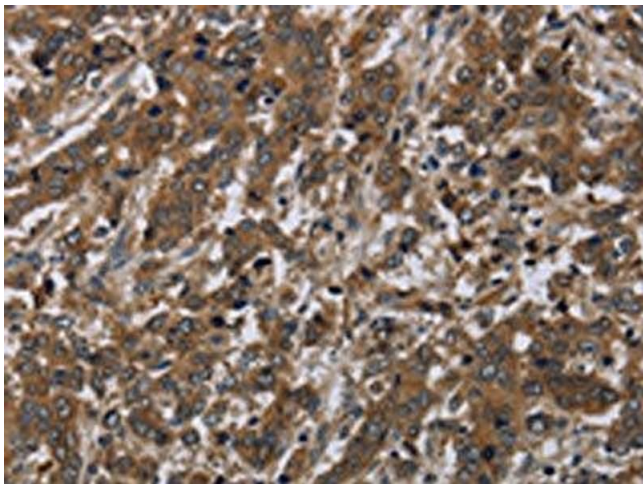
#### Immunohistochemistry

**Image 1.** The image on the left is immunohistochemistry of paraffin-embedded Human ovarian cancer tissue using ABIN7191253(LAIR2 Antibody) at dilution 1/20, on the right is treated with synthetic peptide. (Original magnification: x200)



#### Western Blotting

**Image 2.** Gel: 12 % SDS-PAGE, Lysate: 40 µg, Lane 1-3: Raw264.7, 231 cells, Raji cells, Primary antibody: ABIN7191253(LAIR2 Antibody) at dilution 1/400, Secondary antibody: Goat anti rabbit IgG at 1/8000 dilution, Exposure time: 5 minutes



#### Immunohistochemistry

**Image 3.** The image on the left is immunohistochemistry of paraffin-embedded Human liver cancer tissue using ABIN7191253(LAIR2 Antibody) at dilution 1/20, on the right is treated with synthetic peptide. (Original magnification: x200)