



Datasheet for ABIN7191260
anti-IGLV1-51 antibody



[Go to Product page](#)

3 Images

Overview

Quantity:	100 µL
Target:	IGLV1-51
Reactivity:	Human
Host:	Rabbit
Clonality:	Polyclonal
Conjugate:	This IGLV1-51 antibody is un-conjugated
Application:	Immunohistochemistry (IHC), Western Blotting (WB), ELISA

Product Details

Immunogen:	Synthetic peptide of Human Lambda Light chain
Isotype:	IgG
Cross-Reactivity:	Human
Purification:	Antigen affinity purification

Target Details

Target:	IGLV1-51
Alternative Name:	IGLV1-51 (IGLV1-51 Products)
Background:	Background: Antibody producing cells of the immune system require multiple rearrangements of immunoglobulin (antibody, Ig) genes. Immunoglobulins are four-chain, Y-shaped, monomeric structures of two identical heavy chains and two identical light chains held together through interchain disulfide bonds. Immunoglobulins in vertebrates help to remove non-self molecules

Target Details

or cells (antigens) by recognizing and binding to the antigen and carrying out effector functions that activate the immune system. Variable genetic combinations of the five heavy chain classes (M, D, G, E and A) and the two light chain isotypes, Kappa and Lambda, confer the role of an antibody. The variable region genes encoding immunoglobulin Kappa and Lambda chains are assembled from three DNA segments, the V, C and J genes. Kappa and Lambda consist of a variable region and a constant region and can easily be differentiated by the antigenic properties of the constant region. The ratio of Kappa to Lambda is 70:30, the vast majority of which is bound to heavy-chain in immunoglobulin.

Aliases: IGLV1-51 Immunoglobulin lambda variable 1-51 antibody, Ig lambda chain V-I region BL2 antibody, Ig lambda chain V-I region EPS antibody, Ig lambda chain V-I region NEW antibody, Ig lambda chain V-I region NIG-64 antibody

UniProt: [P01701](#)

Application Details

Application Notes: ELISA:1:1000-1:2000, WB:1:200-1:1000, IHC:1:25-1:100,

Restrictions: For Research Use only

Handling

Format: Liquid

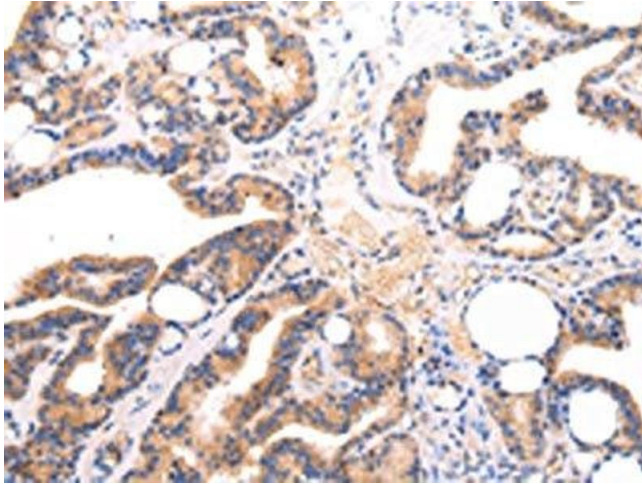
Buffer: -20 °C, pH 7.4 PBS, 0.05 % Sodium azide, 40 % Glycerol

Preservative: Sodium azide

Precaution of Use: This product contains Sodium azide: a POISONOUS AND HAZARDOUS SUBSTANCE which should be handled by trained staff only.

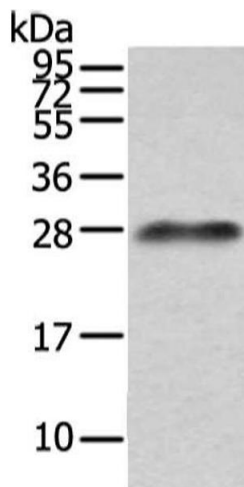
Storage: -20 °C, -80 °C

Storage Comment: Upon receipt, store at -20°C or -80°C. Avoid repeated freeze.



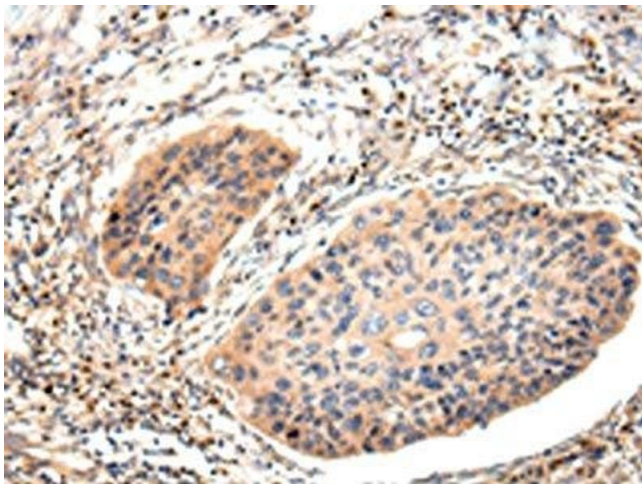
Immunohistochemistry

Image 1. The image on the left is immunohistochemistry of paraffin-embedded Human thyroid cancer tissue using ABIN7191260(Lambda Light chain Antibody) at dilution 1/20, on the right is treated with synthetic peptide. (Original magnification: x200)



Western Blotting

Image 2. Gel: 12 % SDS-PAGE, Lysate: 40 µg, Lane: Human plasma solution, Primary antibody: ABIN7191260(Lambda Light chain Antibody) at dilution 1/200 dilution, Secondary antibody: Goat anti rabbit IgG at 1/8000 dilution, Exposure time: 10 seconds



Immunohistochemistry

Image 3. The image on the left is immunohistochemistry of paraffin-embedded Human esophagus cancer tissue using ABIN7191260(Lambda Light chain Antibody) at dilution 1/20, on the right is treated with synthetic peptide. (Original magnification: x200)