

Datasheet for ABIN7191279

anti-LILRB3 antibody**1** Image[Go to Product page](#)

Overview

Quantity:	100 µL
Target:	LILRB3
Reactivity:	Human
Host:	Rabbit
Clonality:	Polyclonal
Conjugate:	This LILRB3 antibody is un-conjugated
Application:	ELISA, Immunohistochemistry (IHC)

Product Details

Immunogen:	Synthetic peptide of Human LILRB3
Isotype:	IgG
Cross-Reactivity:	Human
Purification:	Antigen affinity purification

Target Details

Target:	LILRB3
Alternative Name:	LILRB3 (LILRB3 Products)
Background:	Background: This gene is a member of the leukocyte immunoglobulin-like receptor (LIR) family, which is found in a gene cluster at chromosomal region 19q13.4. The encoded protein belongs to the subfamily B class of LIR receptors which contain two or four extracellular immunoglobulin domains, a transmembrane domain, and two to four cytoplasmic

Target Details

immunoreceptor tyrosine-based inhibitory motifs (ITIMs). The receptor is expressed on immune cells where it binds to MHC class I molecules on antigen-presenting cells and transduces a negative signal that inhibits stimulation of an immune response. It is thought to control inflammatory responses and cytotoxicity to help focus the immune response and limit autoreactivity. Multiple transcript variants encoding different isoforms have been found for this gene.

Aliases: LILRB3 antibody, ILT5 antibody, LIR3 antibody, Leukocyte immunoglobulin-like receptor subfamily B member 3 antibody, LIR-3 antibody, Leukocyte immunoglobulin-like receptor 3 antibody, CD85 antigen-like family member A antibody, Immunoglobulin-like transcript 5 antibody, ILT-5 antibody, Monocyte inhibitory receptor HL9 antibody, CD antigen CD85a antibody

UniProt: [075022](#)

Application Details

Application Notes: ELISA:1:1000-1:2000, IHC:1:15-1:50,

Restrictions: For Research Use only

Handling

Format: Liquid

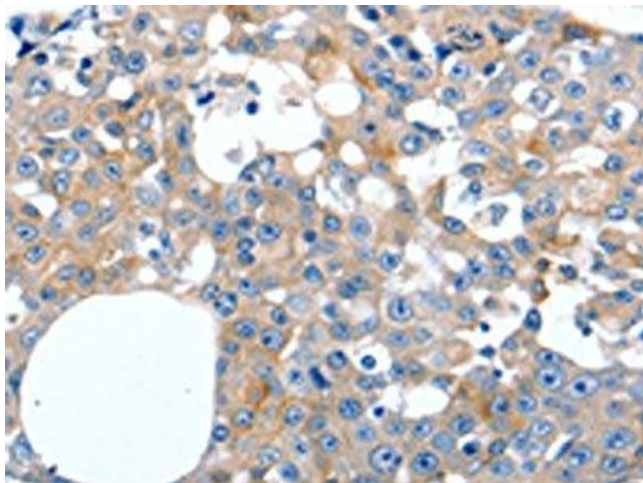
Buffer: -20 °C, pH 7.4 PBS, 0.05 % Sodium azide, 40 % Glycerol

Preservative: Sodium azide

Precaution of Use: This product contains Sodium azide: a POISONOUS AND HAZARDOUS SUBSTANCE which should be handled by trained staff only.

Storage: -20 °C, -80 °C

Storage Comment: Upon receipt, store at -20°C or -80°C. Avoid repeated freeze.



Immunohistochemistry

Image 1. The image on the left is immunohistochemistry of paraffin-embedded Human breast cancer tissue using ABIN7191279(LILRB3 Antibody) at dilution 1/20, on the right is treated with synthetic peptide. (Original magnification: x200)