



[Go to Product page](#)

Datasheet for ABIN7191289

anti-LONP1 antibody

3 Images

Overview

Quantity:	100 µL
Target:	LONP1
Reactivity:	Human
Host:	Rabbit
Clonality:	Polyclonal
Conjugate:	This LONP1 antibody is un-conjugated
Application:	Western Blotting (WB), ELISA, Immunohistochemistry (IHC)

Product Details

Immunogen:	Synthetic peptide of Human LONP1
Isotype:	IgG
Cross-Reactivity:	Human, Mouse
Purification:	Antigen affinity purification

Target Details

Target:	LONP1
Alternative Name:	LONP1 (LONP1 Products)
Background:	Background: This gene encodes a mitochondrial matrix protein that belongs to the Lon family of ATP-dependent proteases. This protein mediates the selective degradation of misfolded, unassembled or oxidatively damaged polypeptides in the mitochondrial matrix. It may also have a chaperone function in the assembly of inner membrane protein complexes, and

Target Details

participate in the regulation of mitochondrial gene expression and maintenance of the integrity of the mitochondrial genome.

Aliases: hLON antibody, hLON ATP dependent protease antibody, LON antibody, Lon peptidase 1, mitochondrial antibody, LON protease antibody, Lon protease homolog antibody, Lon protease like protein antibody, Lon protease-like protein antibody, LONHs antibody, LONM_HUMAN antibody, LONP antibody, Lonp1 antibody, MGC1498 antibody, mitochondrial antibody, Mitochondrial ATP dependent protease Lon antibody, Mitochondrial ATP-dependent protease Lon antibody, Mitochondrial lon peptidase 1 antibody, PIM1 antibody, Protease serine 15 antibody, PRSS15 antibody, Serine protease 15 antibody

UniProt: [P36776](#)

Application Details

Application Notes: ELISA:1:2000-1:5000, WB:1:500-1:2000, IHC:1:25-1:100,

Restrictions: For Research Use only

Handling

Format: Liquid

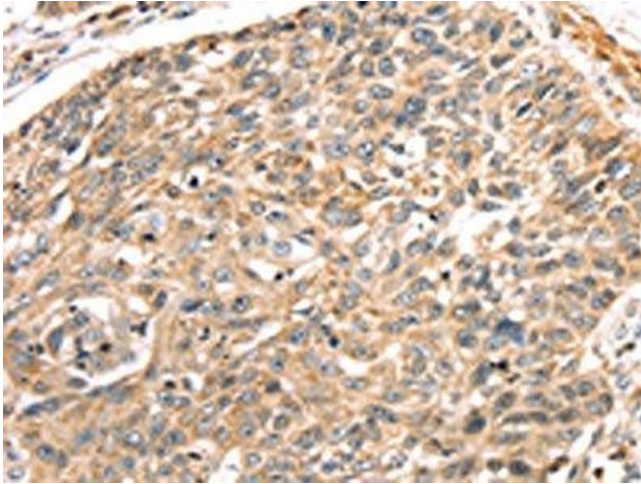
Buffer: -20 °C, pH 7.4 PBS, 0.05 % Sodium azide, 40 % Glycerol

Preservative: Sodium azide

Precaution of Use: This product contains Sodium azide: a POISONOUS AND HAZARDOUS SUBSTANCE which should be handled by trained staff only.

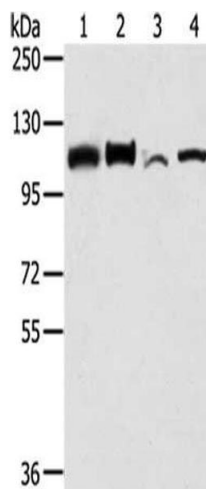
Storage: -20 °C,-80 °C

Storage Comment: Upon receipt, store at -20°C or -80°C. Avoid repeated freeze.



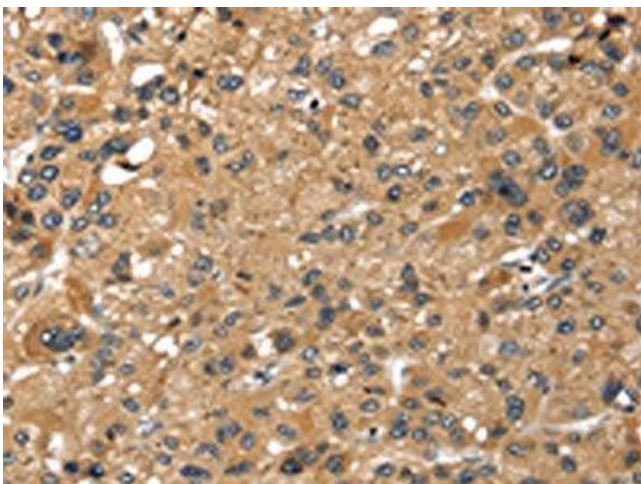
Immunohistochemistry

Image 1. The image on the left is immunohistochemistry of paraffin-embedded Human lung cancer tissue using ABIN7191289(LONP1 Antibody) at dilution 1/25, on the right is treated with synthetic peptide. (Original magnification: x200)



Western Blotting

Image 2. Gel: 6 % SDS-PAGE, Lysate: 40 µg, Lane 1-4: Hela cells, HepG2 cells, NIH/3T3 cells, A431 cells, Primary antibody: ABIN7191289(LONP1 Antibody) at dilution 1/250 dilution, Secondary antibody: Goat anti rabbit IgG at 1/8000 dilution, Exposure time: 30 seconds



Immunohistochemistry

Image 3. The image on the left is immunohistochemistry of paraffin-embedded Human liver cancer tissue using ABIN7191289(LONP1 Antibody) at dilution 1/25, on the right is treated with synthetic peptide. (Original magnification: x200)