



[Go to Product page](#)

Datasheet for ABIN7191315
anti-LRIG3 antibody

1 Image

Overview

Quantity:	100 µL
Target:	LRIG3
Reactivity:	Human
Host:	Rabbit
Clonality:	Polyclonal
Conjugate:	This LRIG3 antibody is un-conjugated
Application:	ELISA, Immunohistochemistry (IHC)

Product Details

Immunogen:	Synthetic peptide of Human LRIG3
Isotype:	IgG
Cross-Reactivity:	Human
Purification:	Antigen affinity purification

Target Details

Target:	LRIG3
Alternative Name:	LRIG3 (LRIG3 Products)
Background:	Background: Leucine-rich repeats and immunoglobulin-like domains 3 (Lrig3) was identified by microarray analysis among genes that show differential expression during gastrulation in <i>Xenopus laevis</i> . Lrig3 was expressed in the neural plate and neural crest (NC) at neurula stages, and in NC derivatives and other dorsal structures during tailbud stages. A prominent

Target Details

consequence of the morpholino-induced inhibition of Lrig3 expression was impaired NC formation, as revealed by the suppression of marker genes, including Slug, Sox9 and Foxd3.
Aliases: Leucine-rich repeats and immunoglobulin-like domains protein 3 antibody, Leucine-rich repeats- and immunoglobulin-like domains- containing protein 3 antibody, LIG-3 antibody, LIG3 antibody, LRIG1-3 antibody, Lrig3 antibody, LRIG3_HUMAN antibody

UniProt: [Q6UXM1](#)

Application Details

Application Notes: ELISA:1:1000-1:5000, IHC:1:25-1:100,

Restrictions: For Research Use only

Handling

Format: Liquid

Buffer: -20 °C, pH 7.4 PBS, 0.05 % Sodium azide, 40 % Glycerol

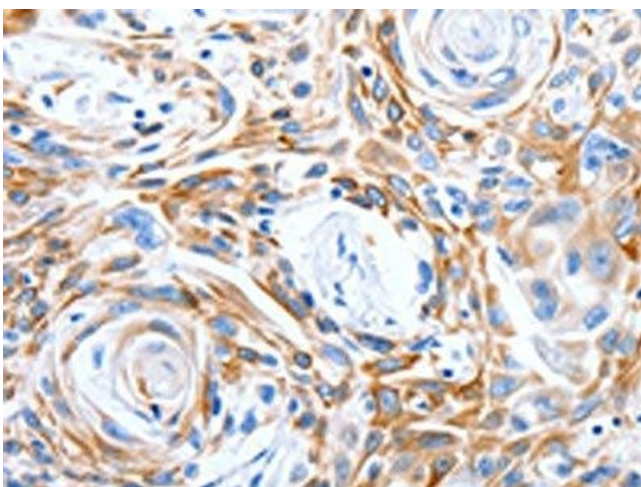
Preservative: Sodium azide

Precaution of Use: This product contains Sodium azide: a POISONOUS AND HAZARDOUS SUBSTANCE which should be handled by trained staff only.

Storage: -20 °C,-80 °C

Storage Comment: Upon receipt, store at -20°C or -80°C. Avoid repeated freeze.

Images



Immunohistochemistry

Image 1. The image on the left is immunohistochemistry of paraffin-embedded Human esophagus cancer tissue using ABIN7191315(LRIG3 Antibody) at dilution 1/50, on the right is treated with synthetic peptide. (Original magnification: x200)