

Datasheet for ABIN7191331
anti-LZTS1 antibody



[Go to Product page](#)

2 Images

Overview

Quantity:	100 µL
Target:	LZTS1
Reactivity:	Human
Host:	Rabbit
Clonality:	Polyclonal
Conjugate:	This LZTS1 antibody is un-conjugated
Application:	Western Blotting (WB), ELISA, Immunohistochemistry (IHC)

Product Details

Immunogen:	Synthetic peptide of Human LZTS1
Isotype:	IgG
Cross-Reactivity:	Human, Mouse, Rat
Purification:	Antigen affinity purification

Target Details

Target:	LZTS1
Alternative Name:	LZTS1 (LZTS1 Products)
Background:	Background: This gene encodes a tumor suppressor protein that is ubiquitously expressed in normal tissues. In uveal melanomas, expression of this protein is silenced in rapidly metastasizing and metastatic tumor cells but has normal expression in slowly metastasizing or nonmetastasizing tumor cells. This protein may have a role in cell-cycle control by interacting

Target Details

with the Cdk1/cyclinB1 complex. This gene is located on chromosomal region 8p22. Loss of heterozygosity (LOH) in the 8p arm is a common characteristic of many types of cancer.

Aliases: F37 antibody, F37/esophageal cancer related gene coding leucine zipper motif antibody, F37/esophageal cancer-related gene-coding leucine-zipper motif antibody, Fez1 antibody, Leucine zipper putative tumor suppressor 1 antibody, Lzts1 antibody, LZTS1_HUMAN antibody, Psdzip70 antibody

UniProt: [Q9Y250](#)

Pathways: [Synaptic Membrane](#)

Application Details

Application Notes: ELISA:1:1000-1:2000, WB:1:200-1:1000, IHC:1:10-1:50,

Restrictions: For Research Use only

Handling

Format: Liquid

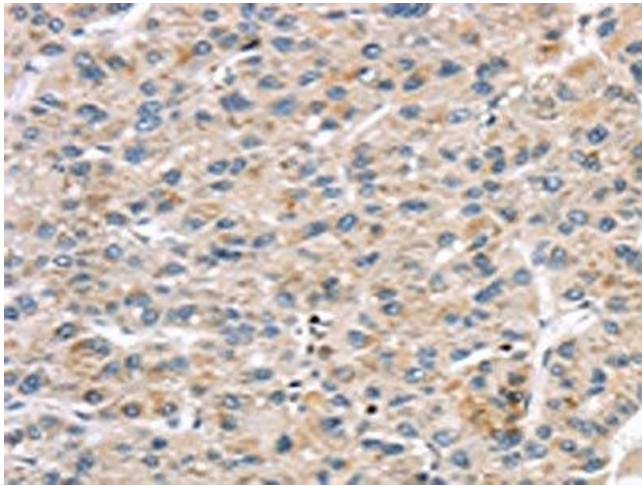
Buffer: -20 °C, pH 7.4 PBS, 0.05 % Sodium azide, 40 % Glycerol

Preservative: Sodium azide

Precaution of Use: This product contains Sodium azide: a POISONOUS AND HAZARDOUS SUBSTANCE which should be handled by trained staff only.

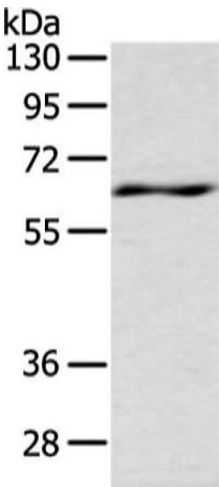
Storage: -20 °C,-80 °C

Storage Comment: Upon receipt, store at -20°C or -80°C. Avoid repeated freeze.



Immunohistochemistry

Image 1. The image on the left is immunohistochemistry of paraffin-embedded Human liver cancer tissue using ABIN7191331(LZTS1 Antibody) at dilution 1/20, on the right is treated with synthetic peptide. (Original magnification: x200)



Western Blotting

Image 2. Gel: 8 % SDS-PAGE, Lysate: 80 µg, Lane: Mouse spleen tissue, Primary antibody: ABIN7191331(LZTS1 Antibody) at dilution 1/200 dilution, Secondary antibody: Goat anti rabbit IgG at 1/8000 dilution, Exposure time: 10 seconds