

Datasheet for ABIN7191460

anti-TOX4 antibody

3 Images

[Go to Product page](#)

Overview

Quantity:	100 µL
Target:	TOX4
Reactivity:	Human
Host:	Rabbit
Clonality:	Polyclonal
Conjugate:	This TOX4 antibody is un-conjugated
Application:	Western Blotting (WB), ELISA, Immunohistochemistry (IHC)

Product Details

Immunogen:	Synthetic peptide of Human MIG7
Isotype:	IgG
Cross-Reactivity:	Human
Purification:	Antigen affinity purification

Target Details

Target:	TOX4
Alternative Name:	MIG7 (TOX4 Products)
Background:	Background: MIG-7 protein inhibited protein phosphatase 2A to sustain Akt/GSK-3β phosphorylation and cancer-cell migration/invasion. Cancer cells overexpressing MIG-7 exhibited increased expression of ZEB-1 and Twist in parallel with epithelial-mesenchymal transition, metastasis and cancer lethality. MIG-7 protein level positively correlated with

Target Details

advanced stages of human lung cancers.

Aliases: mig-7

UniProt: [Q1AHR6](#)

Application Details

Application Notes: ELISA:1:2000-1:5000, WB:1:200-1:1000, IHC:1:50-1:200,

Restrictions: For Research Use only

Handling

Format: Liquid

Buffer: -20 °C, pH 7.4 PBS, 0.05 % Sodium azide, 40 % Glycerol

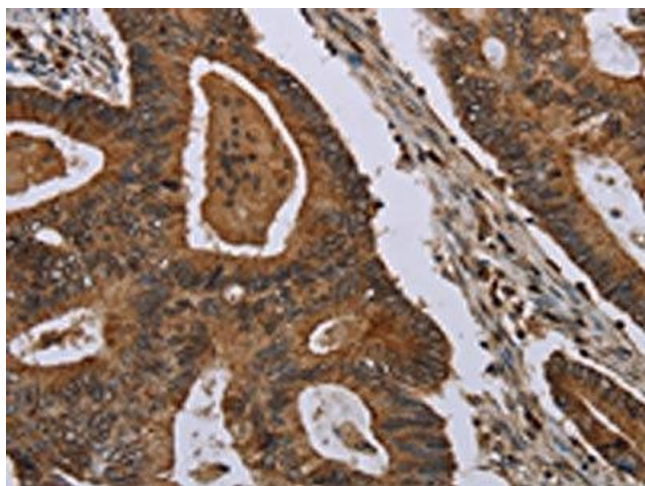
Preservative: Sodium azide

Precaution of Use: This product contains Sodium azide: a POISONOUS AND HAZARDOUS SUBSTANCE which should be handled by trained staff only.

Storage: -20 °C, -80 °C

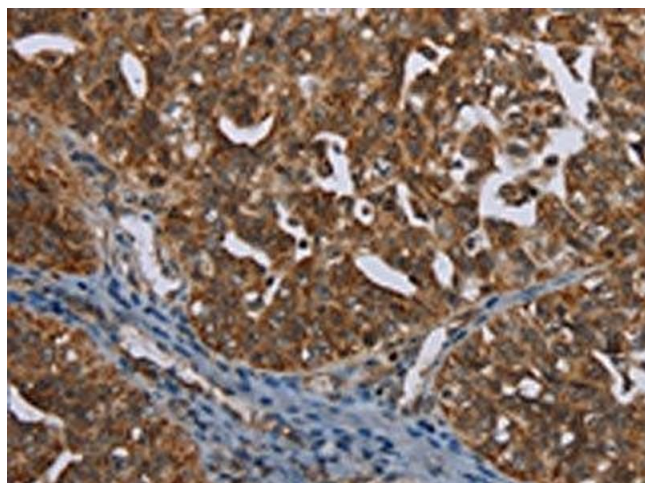
Storage Comment: Upon receipt, store at -20°C or -80°C. Avoid repeated freeze.

Images



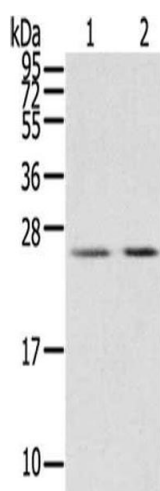
Immunohistochemistry

Image 1. The image on the left is immunohistochemistry of paraffin-embedded Human colon cancer tissue using ABIN7191460(MIG7 Antibody) at dilution 1/35, on the right is treated with synthetic peptide. (Original magnification: x200)



Immunohistochemistry

Image 2. The image on the left is immunohistochemistry of paraffin-embedded Human ovarian cancer tissue using ABIN7191460(MIG7 Antibody) at dilution 1/35, on the right is treated with synthetic peptide. (Original magnification: x200)



Western Blotting

Image 3. Gel: 12 % SDS-PAGE, Lysate: 40 µg, Lane 1-2: Human breast infiltrative duct tissue, Human placenta tissue, Primary antibody: ABIN7191460(MIG7 Antibody) at dilution 1/200, Secondary antibody: Goat anti rabbit IgG at 1/8000 dilution, Exposure time: 15 seconds