

Datasheet for ABIN7191485

anti-MMP23A antibody**3** Images[Go to Product page](#)

Overview

Quantity:	100 µL
Target:	MMP23A
Reactivity:	Human
Host:	Rabbit
Clonality:	Polyclonal
Conjugate:	This MMP23A antibody is un-conjugated
Application:	Western Blotting (WB), Immunohistochemistry (IHC), ELISA

Product Details

Immunogen:	Synthetic peptide of Human MMP23B
Isotype:	IgG
Cross-Reactivity:	Human
Purification:	Antigen affinity purification

Target Details

Target:	MMP23A
Alternative Name:	MMP23A (MMP23A Products)
Background:	Background: This gene (MMP23B) encodes a member of the matrix metalloproteinase (MMP) family, and it is part of a duplicated region of chromosome 1p36.3. Proteins of the matrix metalloproteinase (MMP) family are involved in the breakdown of extracellular matrix in normal physiological processes, such as embryonic development, reproduction, and tissue remodeling,

Target Details

as well as in disease processes, such as arthritis and metastasis. This gene belongs to the more telomeric copy of the duplicated region.

Aliases: Femalysin antibody, Matrix metallopeptidase 21 antibody, matrix metallopeptidase 23B antibody, matrix metalloproteinase 22 antibody, matrix metalloproteinase 22, formerly antibody, Matrix metalloproteinase 23, soluble form antibody, Matrix metalloproteinase 23B antibody, matrix metalloproteinase in the female reproductive tract antibody, Matrix metalloproteinase-21 antibody, Matrix metalloproteinase-22 antibody, Matrix metalloproteinase-23 antibody, MIFR 1 antibody, MIFR antibody, MIFR-1 antibody, MMP 21 antibody, MMP 22 antibody, MMP 23 antibody, MMP-21 antibody, MMP-22 antibody, MMP-23 antibody, MMP21 antibody, MMP22 antibody, MMP22, formerly antibody, MMP23 antibody, MMP23_HUMAN antibody, MMP23A antibody, MMP23B antibody, soluble form antibody

UniProt: [075900](#)

Application Details

Application Notes: ELISA:1:1000-1:2000, WB:1:500-1:2000, IHC:1:25-1:100,

Restrictions: For Research Use only

Handling

Format: Liquid

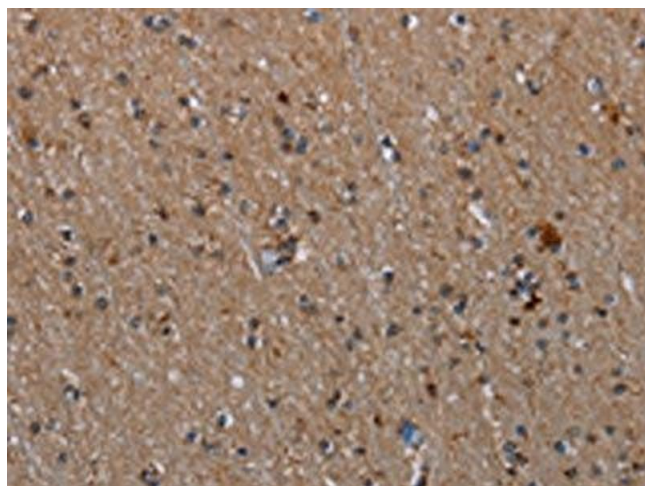
Buffer: -20 °C, pH 7.4 PBS, 0.05 % Sodium azide, 40 % Glycerol

Preservative: Sodium azide

Precaution of Use: This product contains Sodium azide: a POISONOUS AND HAZARDOUS SUBSTANCE which should be handled by trained staff only.

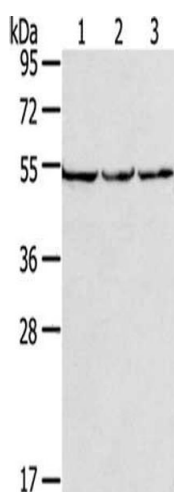
Storage: -20 °C,-80 °C

Storage Comment: Upon receipt, store at -20°C or -80°C. Avoid repeated freeze.



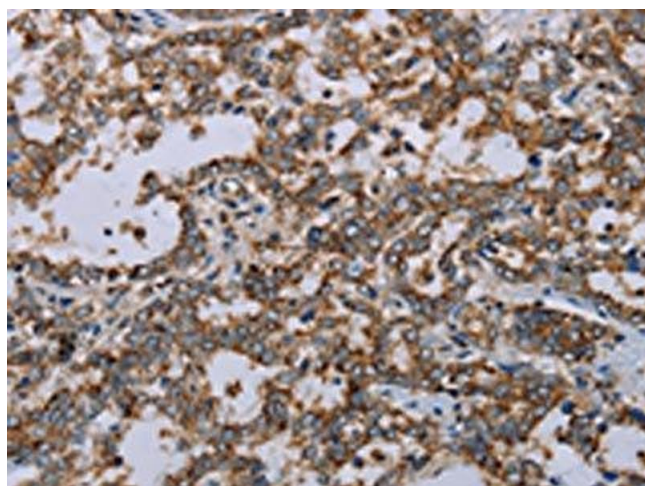
Immunohistochemistry

Image 1. The image on the left is immunohistochemistry of paraffin-embedded Human brain tissue using ABIN7191485(MMP23B Antibody) at dilution 1/20, on the right is treated with synthetic peptide. (Original magnification: x200)



Western Blotting

Image 2. Gel: 8 % SDS-PAGE, Lysate: 40 µg, Lane 1-3: PC3 cells, hela cells, A549 cells, Primary antibody: ABIN7191485(MMP23B Antibody) at dilution 1/200, Secondary antibody: Goat anti rabbit IgG at 1/8000 dilution, Exposure time: 10 seconds



Immunohistochemistry

Image 3. The image on the left is immunohistochemistry of paraffin-embedded Human liver cancer tissue using ABIN7191485(MMP23B Antibody) at dilution 1/20, on the right is treated with synthetic peptide. (Original magnification: x200)