

Datasheet for ABIN7191486

**anti-MMP24 antibody****1** Image[Go to Product page](#)

## Overview

Quantity:	100 µL
Target:	MMP24
Reactivity:	Human
Host:	Rabbit
Clonality:	Polyclonal
Conjugate:	This MMP24 antibody is un-conjugated
Application:	Immunohistochemistry (IHC), ELISA

## Product Details

Immunogen:	Synthetic peptide of Human MMP24
Isotype:	IgG
Cross-Reactivity:	Human, Mouse, Rat
Purification:	Antigen affinity purification

## Target Details

Target:	MMP24
Alternative Name:	MMP24 ( <a href="#">MMP24 Products</a> )
Background:	Background: Proteins of the matrix metalloproteinase (MMP) family are involved in the breakdown of extracellular matrix in normal physiological processes, such as embryonic development, reproduction, and tissue remodeling, as well as in disease processes, such as arthritis and metastasis. Most MMP's are secreted as inactive proproteins which are activated

## Target Details

when cleaved by extracellular proteinases.

Aliases: Matrix metallopeptidase 24 (membrane inserted) antibody, Matrix metallopeptidase 24 antibody, Membrane type 5 matrix metalloproteinase antibody, Membrane type matrix metalloproteinase 5 antibody, Membrane-type matrix metalloproteinase 5 antibody, Membrane-type-5 matrix metalloproteinase antibody, MMP 24 antibody, MMP 25 antibody, MMP-24 antibody, Mmp24 antibody, MMP24\_HUMAN antibody, MMP25 antibody, MT MMP5 antibody, MT-MMP 5 antibody, MT5 MMP antibody, MT5-MMP antibody, MT5MMP antibody, MTMMP5 antibody, Processed matrix metalloproteinase-24 antibody

UniProt: [Q9Y5R2](#)

## Application Details

Application Notes: ELISA:1:2000-1:5000, IHC:1:25-1:100,

Restrictions: For Research Use only

## Handling

Format: Liquid

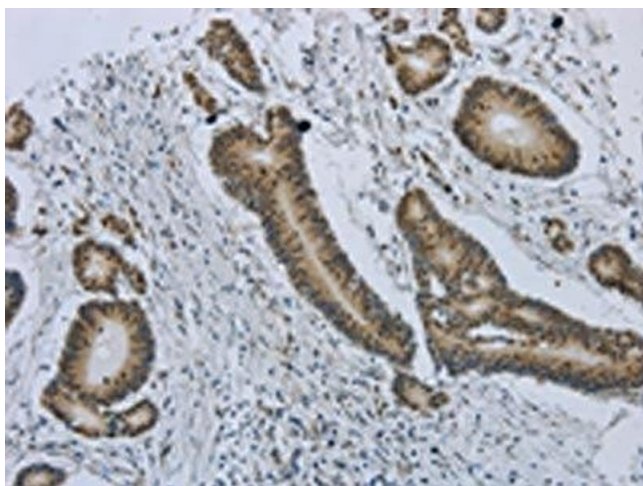
Buffer: -20 °C, pH 7.4 PBS, 0.05 % Sodium azide, 40 % Glycerol

Preservative: Sodium azide

Precaution of Use: This product contains Sodium azide: a POISONOUS AND HAZARDOUS SUBSTANCE which should be handled by trained staff only.

Storage: -20 °C,-80 °C

Storage Comment: Upon receipt, store at -20°C or -80°C. Avoid repeated freeze.



#### Immunohistochemistry

**Image 1.** The image on the left is immunohistochemistry of paraffin-embedded Human colorectal cancer tissue using ABIN7191486(MMP24 Antibody) at dilution 1/25, on the right is treated with synthetic peptide. (Original magnification: x200)