

Datasheet for ABIN7191558  
**anti-MYBBP1A antibody**



[Go to Product page](#)

**3** Images

## Overview

Quantity:	100 µL
Target:	MYBBP1A
Reactivity:	Human
Host:	Rabbit
Clonality:	Polyclonal
Conjugate:	This MYBBP1A antibody is un-conjugated
Application:	Western Blotting (WB), Immunohistochemistry (IHC), ELISA

## Product Details

Purpose:	MYBBP1A Antibody
Immunogen:	Synthetic peptide of Human MYBBP1A
Isotype:	IgG
Purification:	Antigen affinity purification

## Target Details

Target:	MYBBP1A
Alternative Name:	MYBBP1A
Background:	Background: This gene encodes a nucleolar transcriptional regulator that was first identified by its ability to bind specifically to the Myb proto-oncogene protein. The encoded protein is thought to play a role in many cellular processes including response to nucleolar stress, tumor suppression and synthesis of ribosomal DNA. Alternate splicing results in multiple transcript

## Target Details

variants.

Aliases: AL024407 antibody, AU019902 antibody, cb486 antibody, FLJ37886 antibody, MBB1A\_HUMAN antibody, MYB binding protein (P160) 1a antibody, myb binding protein (P160) 1a like antibody, Myb-binding protein 1A antibody, Mybbp1a antibody, nuclear protein P160 antibody, P160 antibody, p160MBP antibody, p53 activated protein 2 antibody, p67MBP antibody, PAP2 antibody, PAR interacting protein antibody, RP23 48A2.3 antibody, sb:cb486 antibody

UniProt: [Q9BQG0](#)

## Application Details

Application Notes: Optimal working dilution should be determined by the investigator.

Restrictions: For Research Use only

## Handling

Format: Liquid

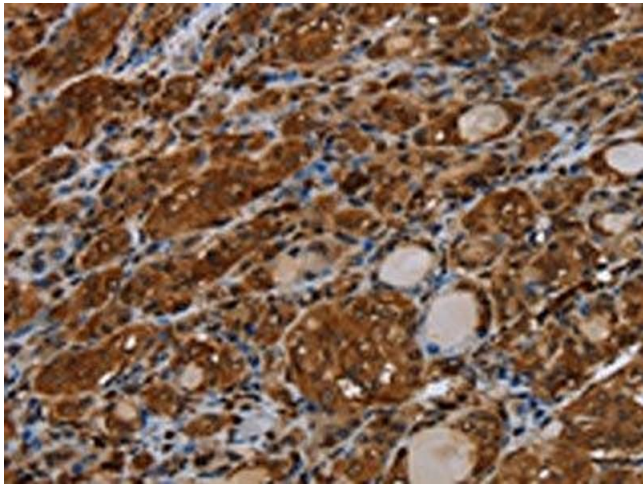
Buffer: pH 7.4 PBS, 0.05 % Sodium azide, 40 % Glycerol

Preservative: Sodium azide

Precaution of Use: This product contains Sodium azide: a POISONOUS AND HAZARDOUS SUBSTANCE which should be handled by trained staff only.

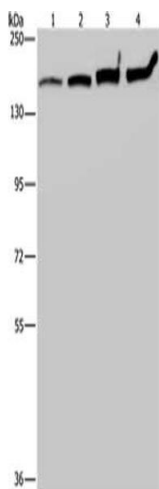
Storage: -20 °C,-80 °C

Storage Comment: Upon receipt, store at -20°C or -80°C. Avoid repeated freeze.



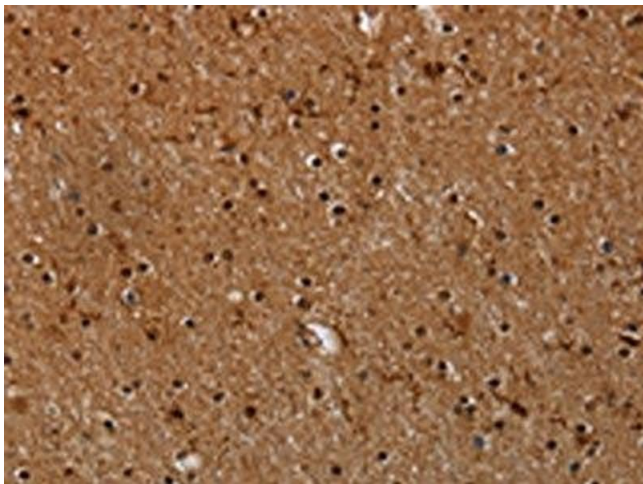
Immunohistochemistry

**Image 1.** The image on the left is immunohistochemistry of paraffin-embedded Human thyroid cancer tissue using ABIN7191558(MYBBP1A Antibody) at dilution 1/40, on the right is treated with synthetic peptide. (Original magnification: x200)



Western Blotting

**Image 2.** Gel: 6 % SDS-PAGE, Lysate: 40 µg, Lane 1-4: HT29 cells, A549 cells, 293T cells, Hela cells, Primary antibody: ABIN7191558(MYBBP1A Antibody) at dilution 1/200, Secondary antibody: Goat anti rabbit IgG at 1/8000 dilution, Exposure time: 20 seconds



Immunohistochemistry

**Image 3.** The image on the left is immunohistochemistry of paraffin-embedded Human brain tissue using ABIN7191558(MYBBP1A Antibody) at dilution 1/40, on the right is treated with synthetic peptide. (Original magnification: x200)