

Datasheet for ABIN7191561

anti-MYF5 antibody**2** Images[Go to Product page](#)

Overview

Quantity:	100 µL
Target:	MYF5
Reactivity:	Human
Host:	Rabbit
Clonality:	Polyclonal
Conjugate:	This MYF5 antibody is un-conjugated
Application:	ELISA, Immunohistochemistry (IHC)

Product Details

Immunogen:	Synthetic peptide of Human MYF5
Isotype:	IgG
Cross-Reactivity:	Human, Mouse
Purification:	Antigen affinity purification

Target Details

Target:	MYF5
Alternative Name:	MYF5 (MYF5 Products)
Background:	Background: Myogenic factor 5 is a protein that in humans is encoded by the MYF5 gene. It is a protein with a key role in regulating muscle differentiation or myogenesis. Without Myf5 and MyoD, myogenic cells will fail to progress normally during the determination stage of myogenesis. Myf5 belongs to a family of proteins known as myogenic regulatory factors

Target Details

(MRFs). These bHLH (basic helix loop helix) transcription factors act sequentially in myogenic differentiation. MRF family members include Myf5, MyoD (Myf3), myogenin, and MRF4 (Myf6).

Aliases: bHLHc2 antibody, Class C basic helix loop helix protein 2 antibody, Class C basic helix-loop-helix protein 2 antibody, Myf 5 antibody, Myf-5 antibody, Myf5 antibody, MYF5_HUMAN antibody, Myogenic factor 5 antibody

UniProt: [P13349](#)

Pathways: [Regulation of Muscle Cell Differentiation](#), [Skeletal Muscle Fiber Development](#)

Application Details

Application Notes: ELISA:1:1000-1:2000, IHC:1:25-1:100,

Restrictions: For Research Use only

Handling

Format: Liquid

Buffer: -20 °C, pH 7.4 PBS, 0.05 % Sodium azide, 40 % Glycerol

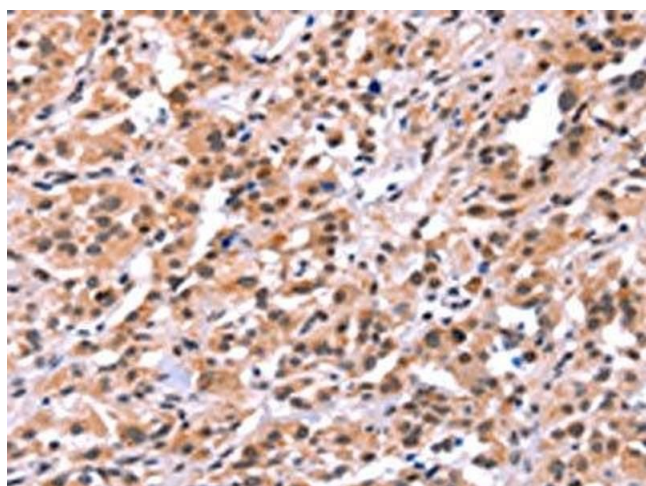
Preservative: Sodium azide

Precaution of Use: This product contains Sodium azide: a POISONOUS AND HAZARDOUS SUBSTANCE which should be handled by trained staff only.

Storage: -20 °C,-80 °C

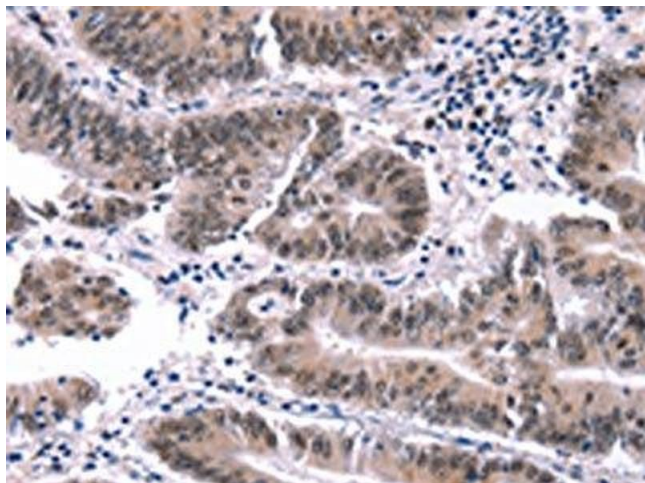
Storage Comment: Upon receipt, store at -20°C or -80°C. Avoid repeated freeze.

Images



Immunohistochemistry

Image 1. The image on the left is immunohistochemistry of paraffin-embedded Human thyroid cancer tissue using ABIN7191561(MYF5 Antibody) at dilution 1/15, on the right is treated with synthetic peptide. (Original magnification: x200)



Immunohistochemistry

Image 2. The image on the left is immunohistochemistry of paraffin-embedded Human colon cancer tissue using ABIN7191561(MYF5 Antibody) at dilution 1/15, on the right is treated with synthetic peptide. (Original magnification: x200)