

Datasheet for ABIN7191576  
**anti-Neurobeachin antibody**

## 2 Images

[Go to Product page](#)

## Overview

Quantity:	100 µL
Target:	Neurobeachin (NBEA)
Reactivity:	Human
Host:	Rabbit
Clonality:	Polyclonal
Conjugate:	This Neurobeachin antibody is un-conjugated
Application:	ELISA, Immunohistochemistry (IHC)

## Product Details

Immunogen:	Synthetic peptide of Human NBEA
Isotype:	IgG
Cross-Reactivity:	Human, Mouse
Purification:	Antigen affinity purification

## Target Details

Target:	Neurobeachin (NBEA)
Alternative Name:	NBEA ( <a href="#">NBEA Products</a> )
Background:	Background: This gene encodes a member of a large, diverse group of A-kinase anchor proteins that target the activity of protein kinase A to specific subcellular sites by binding to its type II regulatory subunits. Brain-specific expression and coat protein-like membrane recruitment of a highly similar protein in mouse suggest an involvement in neuronal post-Golgi membrane

## Target Details

traffic. Mutations in this gene may be associated with a form of autism. This gene and its expression are frequently disrupted in patients with multiple myeloma. Alternative splicing results in multiple transcript variants encoding distinct isoforms. Additional transcript variants may exist, but their full-length nature has not been determined.

Aliases: BCL8B antibody, FLJ10197 antibody, KIAA1544 antibody, Lysosomal trafficking regulator 2 antibody, Lysosomal-trafficking regulator 2 antibody, LYST2 antibody, NBEA antibody, NBEA\_HUMAN antibody, Neurobeachin antibody, Protein BCL8B antibody, Protein neurobeachin antibody, RP11-270C18.1 antibody

UniProt: [Q8NFP9](#)

## Application Details

Application Notes: ELISA:1:1000-1:5000, IHC:1:25-1:100,

Restrictions: For Research Use only

## Handling

Format: Liquid

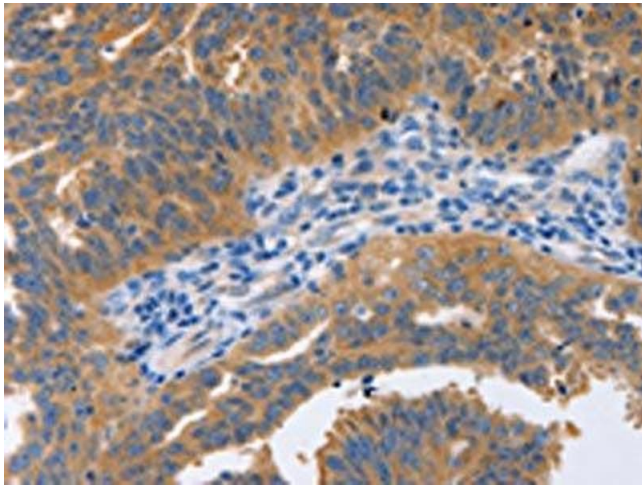
Buffer: -20 °C, pH 7.4 PBS, 0.05 % Sodium azide, 40 % Glycerol

Preservative: Sodium azide

Precaution of Use: This product contains Sodium azide: a POISONOUS AND HAZARDOUS SUBSTANCE which should be handled by trained staff only.

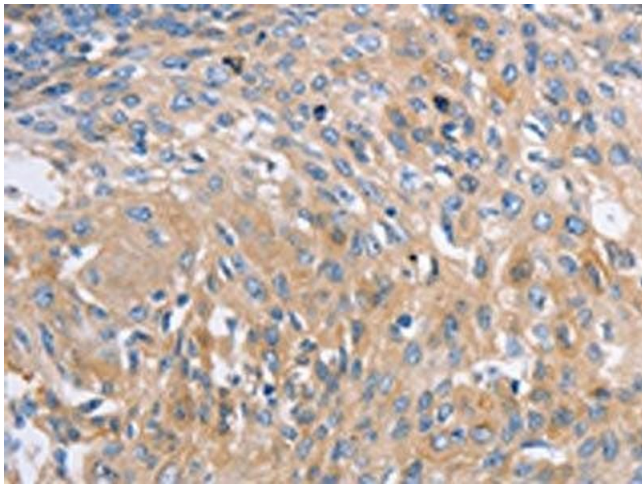
Storage: -20 °C, -80 °C

Storage Comment: Upon receipt, store at -20°C or -80°C. Avoid repeated freeze.



#### Immunohistochemistry

**Image 1.** The image on the left is immunohistochemistry of paraffin-embedded Human ovarian cancer tissue using ABIN7191576(NBEA Antibody) at dilution 1/60, on the right is treated with synthetic peptide. (Original magnification: x200)



#### Immunohistochemistry

**Image 2.** The image on the left is immunohistochemistry of paraffin-embedded Human cervical cancer tissue using ABIN7191576(NBEA Antibody) at dilution 1/60, on the right is treated with synthetic peptide. (Original magnification: x200)