



[Go to Product page](#)

Datasheet for ABIN7191618  
**anti-NEFM antibody**

2 Images

Overview

Quantity:	100 µL
Target:	NEFM
Reactivity:	Human
Host:	Rabbit
Clonality:	Polyclonal
Conjugate:	This NEFM antibody is un-conjugated
Application:	Western Blotting (WB), Immunohistochemistry (IHC), ELISA

Product Details

Immunogen:	Synthetic peptide of Human NEFM
Isotype:	IgG
Cross-Reactivity:	Human, Mouse, Rat
Purification:	Antigen affinity purification

Target Details

Target:	NEFM
Alternative Name:	NEFM ( <a href="#">NEFM Products</a> )
Background:	Background: Neurofilaments are type IV intermediate filament heteropolymers composed of light, medium, and heavy chains. Neurofilaments comprise the axoskeleton and functionally maintain neuronal caliber. They may also play a role in intracellular transport to axons and dendrites. This gene encodes the medium neurofilament protein. This protein is commonly

## Target Details

---

used as a biomarker of neuronal damage. Alternative splicing results in multiple transcript variants encoding distinct isoforms.

Aliases: 150 kDa medium antibody, 160 kDa neurofilament protein antibody, 2 kDa neurofilament protein antibody, 200 kDa neurofilament protein antibody, 68 kDa neurofilament protein antibody, A1847934 antibody, CMT1F antibody, CMT2CC antibody, CMT2E antibody, FLJ53642 antibody, KIAA0845 antibody, light molecular weight neurofilament protein antibody, Micro glutamic acid-rich protein antibody, mKIAA0845 antibody, Nef3 antibody, NEFH antibody, NEFL antibody, NEFM antibody, Neurofilament 3 antibody, Neurofilament heavy polypeptide 200 kDa antibody, Neurofilament heavy polypeptide antibody, Neurofilament light polypeptide 68 kDa antibody, Neurofilament light polypeptide antibody, Neurofilament medium polypeptide 150 kDa antibody, Neurofilament medium polypeptide antibody, Neurofilament protein heavy polypeptide antibody, Neurofilament protein light chain antibody, Neurofilament protein light polypeptide antibody, Neurofilament protein medium polypeptide antibody, neurofilament subunit NF-L antibody, Neurofilament triplet H protein antibody, Neurofilament triplet L protein antibody, Neurofilament triplet M protein antibody, neurofilament-3 (150 kD medium) antibody, NF-H antibody, NF-L antibody, NF-M antibody, NF160 antibody, NF165 antibody, NF200 antibody, NF68 antibody, NFH antibody, NFL antibody, NFM antibody, NFM\_HUMAN antibody, PPP1R110 antibody, protein phosphatase 1, regulatory subunit 110 antibody

---

UniProt: [P07197](#)

---

Pathways: [Brown Fat Cell Differentiation](#)

## Application Details

---

Application Notes: ELISA:1:1000-1:2000, WB:1:200-1:1000, IHC:1:25-1:100,

---

Restrictions: For Research Use only

## Handling

---

Format: Liquid

---

Buffer: -20 °C, pH 7.4 PBS, 0.05 % Sodium azide, 40 % Glycerol

---

Preservative: Sodium azide

---

Precaution of Use: This product contains Sodium azide: a POISONOUS AND HAZARDOUS SUBSTANCE which should be handled by trained staff only.

---

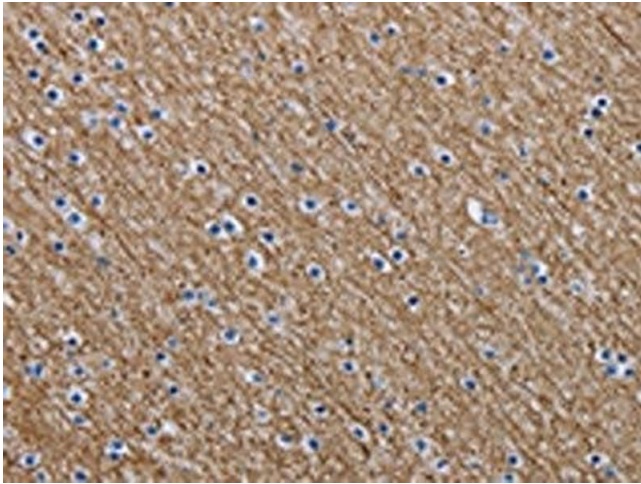
Storage: -20 °C,-80 °C

---

## Handling

Storage Comment: Upon receipt, store at -20°C or -80°C. Avoid repeated freeze.

## Images



### Immunohistochemistry

**Image 1.** The image is immunohistochemistry of paraffin-embedded Human brain tissue using ABIN7191618(NEFM Antibody) at dilution 1/20. (Original magnification: x200)



### Western Blotting

**Image 2.** Gel: 6 % SDS-PAGE, Lysate: 40 µg, Lane: Human brain malignant glioma tissue, Primary antibody: ABIN7191618(NEFM Antibody) at dilution 1/150, Secondary antibody: Goat anti rabbit IgG at 1/8000 dilution, Exposure time: 1 minutes