

Datasheet for ABIN7191695
anti-NPR2 antibody

3 Images



[Go to Product page](#)

Overview

Quantity:	100 µL
Target:	NPR2
Reactivity:	Human
Host:	Rabbit
Clonality:	Polyclonal
Conjugate:	This NPR2 antibody is un-conjugated
Application:	ELISA, Western Blotting (WB), Immunohistochemistry (IHC)

Product Details

Immunogen:	Synthetic peptide of Human NPR2
Isotype:	IgG
Cross-Reactivity:	Human, Mouse, Rat
Purification:	Antigen affinity purification

Target Details

Target:	NPR2
Alternative Name:	NPR2 (NPR2 Products)
Background:	Background: This gene encodes natriuretic peptide receptor B, one of two integral membrane receptors for natriuretic peptides. Both NPR1 and NPR2 contain five functional domains: an extracellular ligand-binding domain, a single membrane-spanning region, and intracellularly a protein kinase homology domain, a helical hinge region involved in oligomerization, and a

Target Details

carboxyl-terminal guanylyl cyclase catalytic domain. The protein is the primary receptor for C-type natriuretic peptide (CNP), which upon ligand binding exhibits greatly increased guanylyl cyclase activity.

Aliases: AMDM antibody, ANP-B antibody, ANPB antibody, ANPR-B antibody, ANPRB antibody, ANPRB_HUMAN antibody, Atrial natriuretic peptide B type receptor antibody, Atrial natriuretic peptide receptor 2 antibody, Atrial natriuretic peptide receptor type B antibody, Atrionatriuretic peptide receptor B antibody, GC-B antibody, GCB antibody, Guanylate cyclase B antibody, GUC2B antibody, GUC2B antibody, GUCY2B antibody, Natriuretic peptide receptor B antibody, Natriuretic peptide receptor B/guanylate cyclase B antibody, NPR-B antibody, Npr2 antibody, NPRB antibody, NPRBi antibody

UniProt: [P20594](#)

Application Details

Application Notes: ELISA:1:2000-1:5000, WB:1:500-1:2000, IHC:1:50-1:200,

Restrictions: For Research Use only

Handling

Format: Liquid

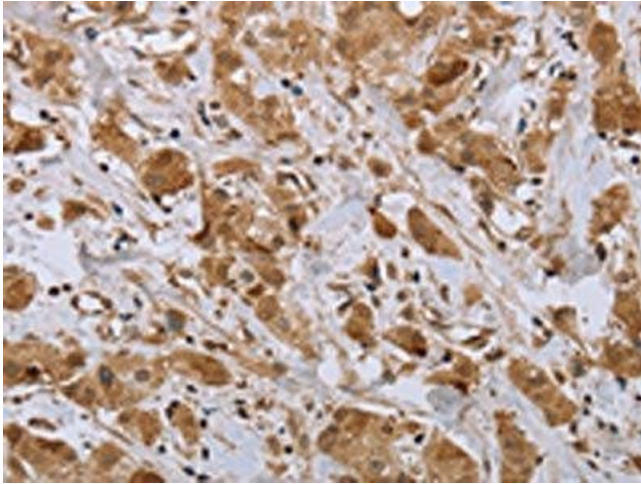
Buffer: -20 °C, pH 7.4 PBS, 0.05 % Sodium azide, 40 % Glycerol

Preservative: Sodium azide

Precaution of Use: This product contains Sodium azide: a POISONOUS AND HAZARDOUS SUBSTANCE which should be handled by trained staff only.

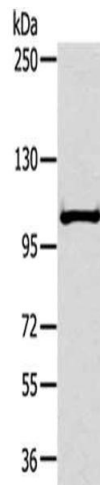
Storage: -20 °C,-80 °C

Storage Comment: Upon receipt, store at -20°C or -80°C. Avoid repeated freeze.



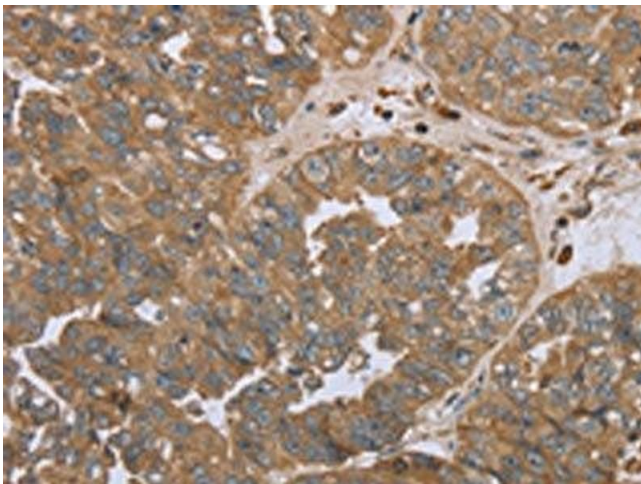
Immunohistochemistry

Image 1. The image on the left is immunohistochemistry of paraffin-embedded Human breast cancer tissue using ABIN7191695(NPR2 Antibody) at dilution 1/45, on the right is treated with synthetic peptide. (Original magnification: x200)



Western Blotting

Image 2. Gel: 6 % SDS-PAGE, Lysate: 40 µg, Lane: Mouse liver tissue, Primary antibody: ABIN7191695(NPR2 Antibody) at dilution 1/300, Secondary antibody: Goat anti rabbit IgG at 1/8000 dilution, Exposure time: 30 seconds



Immunohistochemistry

Image 3. The image on the left is immunohistochemistry of paraffin-embedded Human ovarian cancer tissue using ABIN7191695(NPR2 Antibody) at dilution 1/45, on the right is treated with synthetic peptide. (Original magnification: x200)