

Datasheet for ABIN7191717  
**anti-Neuregulin 3 antibody**[Go to Product page](#)

## 3 Images

## Overview

Quantity:	100 µL
Target:	Neuregulin 3 (NRG3)
Reactivity:	Human
Host:	Rabbit
Clonality:	Polyclonal
Application:	Western Blotting (WB), ELISA, Immunohistochemistry (IHC)

## Product Details

Immunogen:	Synthetic peptide of Human NRG3
Isotype:	IgG
Cross-Reactivity:	Human, Mouse
Purification:	Antigen affinity purification

## Target Details

Target:	Neuregulin 3 (NRG3)
Alternative Name:	NRG3 ( <a href="#">NRG3 Products</a> )
Background:	Background: This gene is a member of the neuregulin gene family. This gene family encodes ligands for the transmembrane tyrosine kinase receptors ERBB3 and ERBB4 - members of the epidermal growth factor receptor family. Ligand binding activates intracellular signaling cascades and the induction of cellular responses including proliferation, migration, differentiation, and survival or apoptosis. This gene encodes neuregulin 3 (NRG3). NRG3 has

## Target Details

been shown to activate the tyrosine phosphorylation of its cognate receptor, ERBB4, and is thought to influence neuroblast proliferation, migration and differentiation by signalling through ERBB4.

Aliases: HRG3 antibody, Neuregulin 3 antibody, Neuregulin 3 like polypeptide antibody, Neuregulin-3 antibody, Neuregulin3 antibody, NRG-3 antibody, Nrg3 antibody, NRG3\_HUMAN antibody, Pro neuregulin 3 antibody, pro NRG3 antibody, Pro-NRG3 antibody

UniProt: [P56975](#)

Pathways: [RTK Signaling](#)

## Application Details

Application Notes: ELISA:1:1000-1:2000, WB:1:200-1:1000, IHC:1:50-1:200,

Restrictions: For Research Use only

## Handling

Format: Liquid

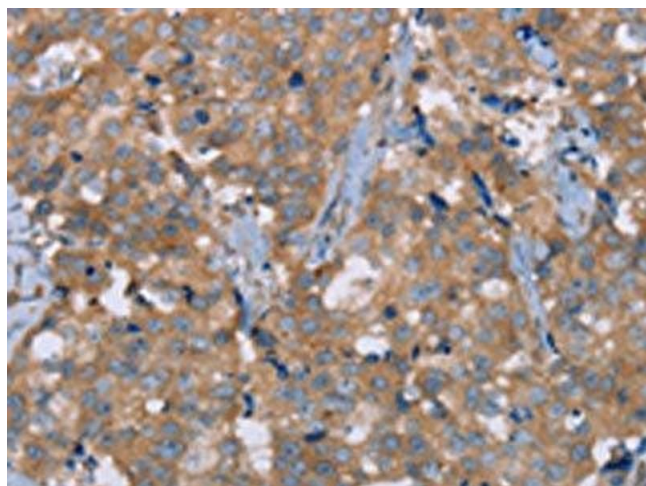
Buffer: -20 °C, pH 7.4 PBS, 0.05 % Sodium azide, 40 % Glycerol

Preservative: Sodium azide

Precaution of Use: This product contains Sodium azide: a POISONOUS AND HAZARDOUS SUBSTANCE which should be handled by trained staff only.

Storage: -20 °C, -80 °C

Storage Comment: Upon receipt, store at -20°C or -80°C. Avoid repeated freeze.



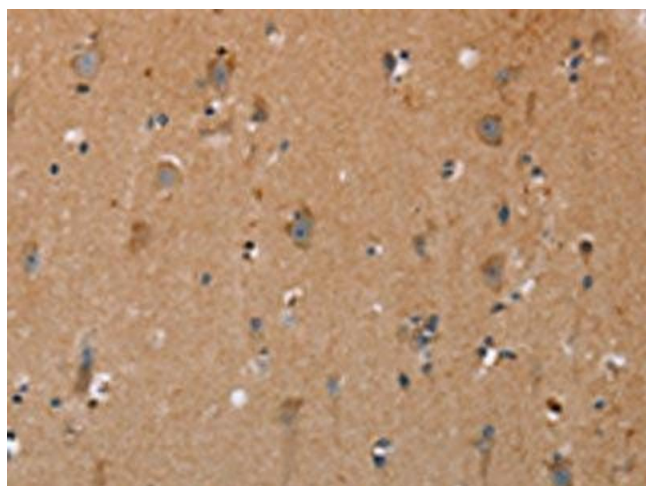
#### Immunohistochemistry

**Image 1.** The image on the left is immunohistochemistry of paraffin-embedded Human breast cancer tissue using ABIN7191717(NRG3 Antibody) at dilution 1/30, on the right is treated with synthetic peptide. (Original magnification: x200)



#### Western Blotting

**Image 2.** Gel: 6 % SDS-PAGE, Lysate: 40 µg, Lane: Human fetal brain tissue, Primary antibody: ABIN7191717(NRG3 Antibody) at dilution 1/200, Secondary antibody: Goat anti rabbit IgG at 1/8000 dilution, Exposure time: 2 minutes



#### Immunohistochemistry

**Image 3.** The image on the left is immunohistochemistry of paraffin-embedded Human brain tissue using ABIN7191717(NRG3 Antibody) at dilution 1/30, on the right is treated with synthetic peptide. (Original magnification: x200)