

Datasheet for ABIN7191755

anti-P2RY1 antibody

3 Images

[Go to Product page](#)

Overview

Quantity:	100 µL
Target:	P2RY1
Reactivity:	Human
Host:	Rabbit
Clonality:	Polyclonal
Conjugate:	This P2RY1 antibody is un-conjugated
Application:	Western Blotting (WB), ELISA, Immunohistochemistry (IHC)

Product Details

Immunogen:	Synthetic peptide of Human P2RY1
Isotype:	IgG
Cross-Reactivity:	Human, Mouse, Rat
Purification:	Antigen affinity purification

Target Details

Target:	P2RY1
Alternative Name:	P2RY1 (P2RY1 Products)
Background:	<p>Background: The product of this gene belongs to the family of G-protein coupled receptors. This family has several receptor subtypes with different pharmacological selectivity, which overlaps in some cases, for various adenosine and uridine nucleotides. This receptor functions as a receptor for extracellular ATP and ADP. In platelets binding to ADP leads to mobilization of</p>

Target Details

intracellular calcium ions via activation of phospholipase C, a change in platelet shape, and probably to platelet aggregation.

Aliases: ATP receptor antibody, P2 purinoceptor subtype Y1 antibody, P2RY1 antibody, P2RY1_HUMAN antibody, P2Y purinoceptor 1 antibody, P2Y1 antibody, P2Y1 purinoceptor antibody, Platelet ADP receptor antibody, Purinergic receptor antibody, Purinergic receptor P2Y G protein coupled 1 antibody, Purinergic receptor P2Y1 antibody

UniProt: [P47900](#)

Pathways: [Regulation of Carbohydrate Metabolic Process](#), [Feeding Behaviour](#)

Application Details

Application Notes: ELISA:1:1000-1:2000, WB:1:200-1:1000, IHC:1:50-1:200,

Restrictions: For Research Use only

Handling

Format: Liquid

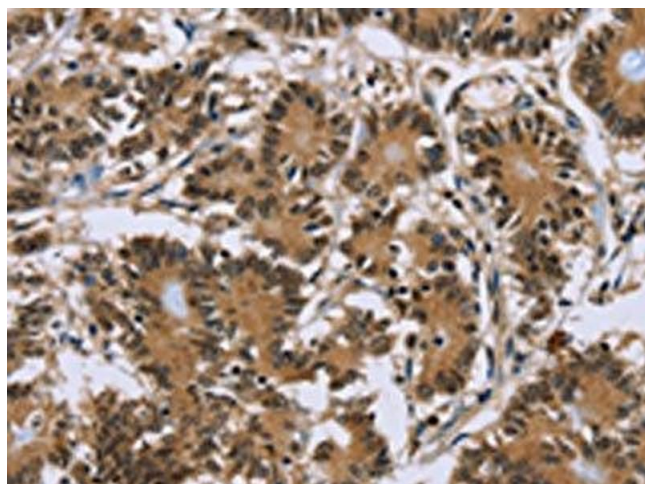
Buffer: -20 °C, pH 7.4 PBS, 0.05 % Sodium azide, 40 % Glycerol

Preservative: Sodium azide

Precaution of Use: This product contains Sodium azide: a POISONOUS AND HAZARDOUS SUBSTANCE which should be handled by trained staff only.

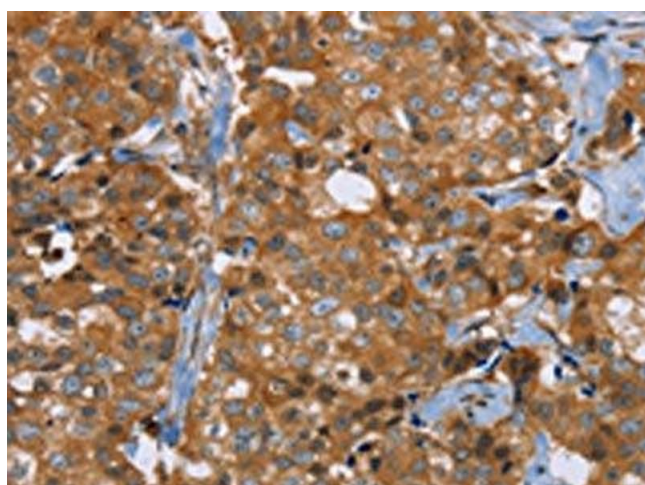
Storage: -20 °C, -80 °C

Storage Comment: Upon receipt, store at -20°C or -80°C. Avoid repeated freeze.



Immunohistochemistry

Image 1. The image on the left is immunohistochemistry of paraffin-embedded Human colon cancer tissue using ABIN7191755(P2RY1 Antibody) at dilution 1/40, on the right is treated with synthetic peptide. (Original magnification: x200)



Immunohistochemistry

Image 2. The image on the left is immunohistochemistry of paraffin-embedded Human breast cancer tissue using ABIN7191755(P2RY1 Antibody) at dilution 1/40, on the right is treated with synthetic peptide. (Original magnification: x200)



Western Blotting

Image 3. Gel: 10 % SDS-PAGE, Lysate: 40 µg, Lane 1-2: A549 cells, mouse liver tissue, Primary antibody: ABIN7191755(P2RY1 Antibody) at dilution 1/200, Secondary antibody: Goat anti rabbit IgG at 1/8000 dilution, Exposure time: 30 seconds