

Datasheet for ABIN7191804  
**anti-PCDHAC1 antibody**[Go to Product page](#)

## 3 Images

## Overview

Quantity:	100 µL
Target:	PCDHAC1
Reactivity:	Human
Host:	Rabbit
Clonality:	Polyclonal
Application:	Western Blotting (WB), ELISA, Immunohistochemistry (IHC)

## Product Details

Immunogen:	Synthetic peptide of Human PCDHAC1
Isotype:	IgG
Cross-Reactivity:	Human
Purification:	Antigen affinity purification

## Target Details

Target:	PCDHAC1
Alternative Name:	PCDHAC1 ( <a href="#">PCDHAC1 Products</a> )
Background:	Background: This gene is a member of the protocadherin alpha gene cluster, one of three related gene clusters tandemly linked on chromosome five that demonstrate an unusual genomic organization similar to that of B-cell and T-cell receptor gene clusters. The alpha gene cluster is composed of 15 cadherin superfamily genes related to the mouse CNR genes and consists of 13 highly similar and 2 more distantly related coding sequences.

## Target Details

Aliases: PCDHAC1 Protocadherin alpha-C1 antibody, PCDH-alpha-C1 antibody

UniProt: [Q9H158](#)

## Application Details

Application Notes: ELISA:1:1000-1:2000, WB:1:200-1:1000, IHC:1:50-1:200,

Restrictions: For Research Use only

## Handling

Format: Liquid

Buffer: -20 °C, pH 7.4 PBS, 0.05 % Sodium azide, 40 % Glycerol

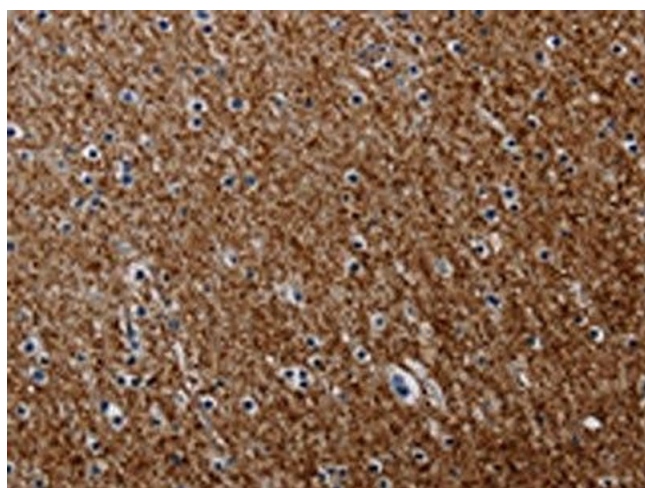
Preservative: Sodium azide

Precaution of Use: This product contains Sodium azide: a POISONOUS AND HAZARDOUS SUBSTANCE which should be handled by trained staff only.

Storage: -20 °C, -80 °C

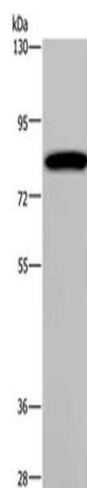
Storage Comment: Upon receipt, store at -20°C or -80°C. Avoid repeated freeze.

## Images



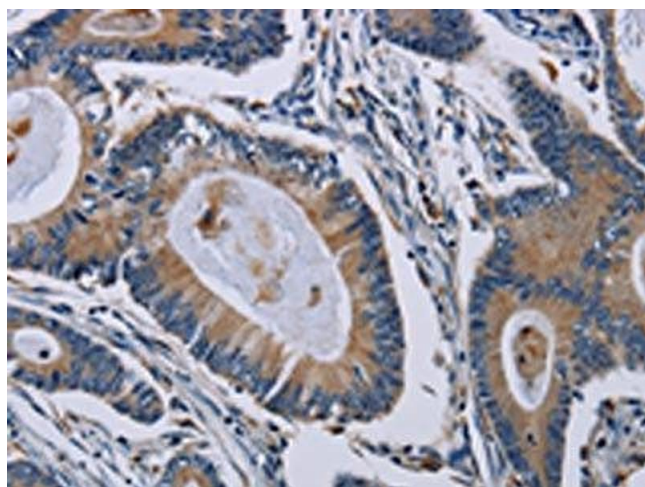
### Immunohistochemistry

**Image 1.** The image on the left is immunohistochemistry of paraffin-embedded Human brain tissue using ABIN7191804(PCDHAC1 Antibody) at dilution 1/50, on the right is treated with synthetic peptide. (Original magnification: x200)



### Western Blotting

**Image 2.** Gel: 6 % SDS-PAGE, Lysate: 40 µg, Lane: K562 cells, Primary antibody: ABIN7191804(PCDHAC1 Antibody) at dilution 1/200, Secondary antibody: Goat anti rabbit IgG at 1/8000 dilution, Exposure time: 1 minute



### Immunohistochemistry

**Image 3.** The image on the left is immunohistochemistry of paraffin-embedded Human colon cancer tissue using ABIN7191804(PCDHAC1 Antibody) at dilution 1/50, on the right is treated with synthetic peptide. (Original magnification: x200)