

Datasheet for ABIN7191822

**anti-PDE5A antibody**

3 Images

[Go to Product page](#)

## Overview

Quantity:	100 µL
Target:	PDE5A
Reactivity:	Human
Host:	Rabbit
Clonality:	Polyclonal
Application:	Western Blotting (WB), ELISA, Immunohistochemistry (IHC)

## Product Details

Immunogen:	Synthetic peptide of Human PDE5A
Isotype:	IgG
Cross-Reactivity:	Human
Purification:	Antigen affinity purification

## Target Details

Target:	PDE5A
Alternative Name:	PDE5A ( <a href="#">PDE5A Products</a> )
Background:	<p>Background: This gene encodes a cGMP-binding, cGMP-specific phosphodiesterase, a member of the cyclic nucleotide phosphodiesterase family. This phosphodiesterase specifically hydrolyzes cGMP to 5'-GMP. It is involved in the regulation of intracellular concentrations of cyclic nucleotides and is important for smooth muscle relaxation in the cardiovascular system.</p> <p>Alternative splicing of this gene results in three transcript variants encoding distinct isoforms.</p>

## Target Details

Aliases: 5"-cyclic phosphodiesterase antibody, CGB PDE antibody, CGB-PDE antibody, CGBPDE antibody, cGMP binding cGMP specific 3' 5' cyclic nucleotide phosphodiesterase antibody, cGMP binding cGMP specific 35 cyclic nucleotide phosphodiesterase antibody, cGMP binding cGMP specific phosphodiesterase antibody, cGMP binding/cGMP specific phosphodiesterase antibody, cGMP specific 3'5' cyclic phosphodiesterase antibody, cGMP specific phosphodiesterase PDE5A2 antibody, cGMP specific phosphodiesterase type 5A antibody, cGMP-binding cGMP-specific phosphodiesterase antibody, cGMP-specific 3" antibody, CN5A antibody, CN5N antibody, PDE 5 antibody, PDE 5A antibody, PDE5 antibody, Pde5a antibody, PDE5A\_HUMAN antibody, PDE5A1 antibody, Phosphodiesterase 5A antibody, Phosphodiesterase 5A cGMP specific antibody, Phosphodiesterase isozyme 5 antibody

UniProt: [076074](#)

Pathways: [Regulation of G-Protein Coupled Receptor Protein Signaling](#)

## Application Details

Application Notes: ELISA:1:1000-1:2000, WB:1:200-1:1000, IHC:1:100-1:300,

Restrictions: For Research Use only

## Handling

Format: Liquid

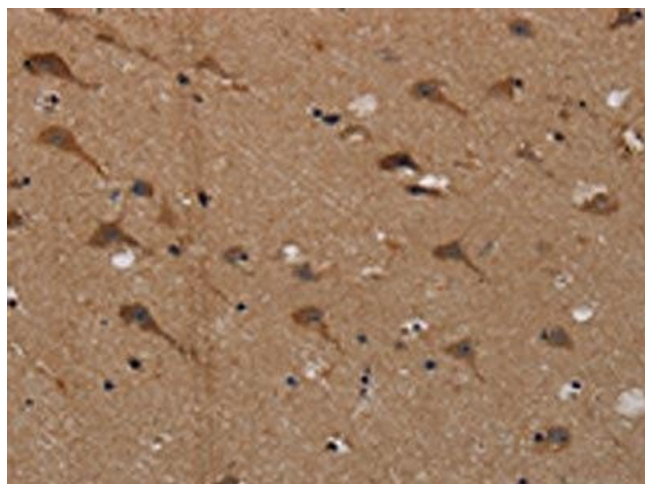
Buffer: -20 °C, pH 7.4 PBS, 0.05 % Sodium azide, 40 % Glycerol

Preservative: Sodium azide

Precaution of Use: This product contains Sodium azide: a POISONOUS AND HAZARDOUS SUBSTANCE which should be handled by trained staff only.

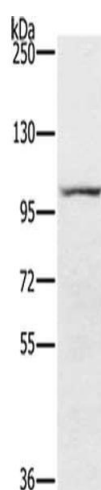
Storage: -20 °C,-80 °C

Storage Comment: Upon receipt, store at -20°C or -80°C. Avoid repeated freeze.



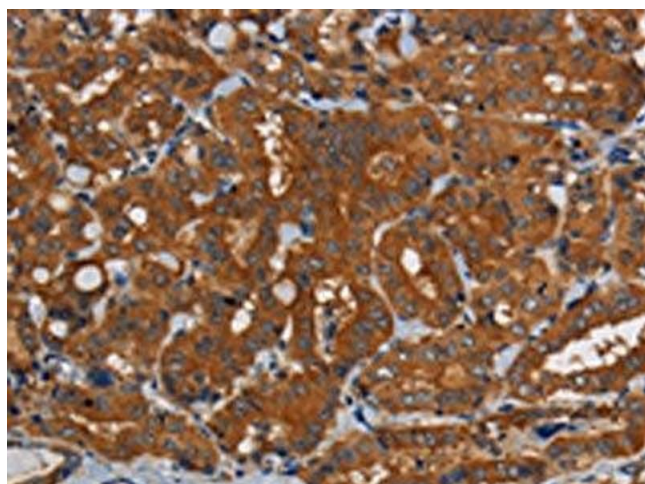
### Immunohistochemistry

**Image 1.** The image on the left is immunohistochemistry of paraffin-embedded Human brain tissue using ABIN7191822(PDE5A Antibody) at dilution 1/50, on the right is treated with synthetic peptide. (Original magnification: x200)



### Western Blotting

**Image 2.** Gel: 6 % SDS-PAGE, Lysate: 40 µg, Lane: 293T cells, Primary antibody: ABIN7191822(PDE5A Antibody) at dilution 1/200, Secondary antibody: Goat anti rabbit IgG at 1/8000 dilution, Exposure time: 2 minutes



### Immunohistochemistry

**Image 3.** The image on the left is immunohistochemistry of paraffin-embedded Human thyroid cancer tissue using ABIN7191822(PDE5A Antibody) at dilution 1/50, on the right is treated with synthetic peptide. (Original magnification: x200)