



Datasheet for ABIN7191847
anti-PFDN6 antibody



[Go to Product page](#)

3 Images

Overview

Quantity:	100 µL
Target:	PFDN6
Reactivity:	Human
Host:	Rabbit
Clonality:	Polyclonal
Conjugate:	This PFDN6 antibody is un-conjugated
Application:	Western Blotting (WB), Immunohistochemistry (IHC), ELISA

Product Details

Immunogen:	Synthetic peptide of Human PFDN6
Isotype:	IgG
Cross-Reactivity:	Human, Mouse
Purification:	Antigen affinity purification

Target Details

Target:	PFDN6
Alternative Name:	PFDN6 (PFDN6 Products)
Background:	Background: PFDN6 is a subunit of the heteromeric prefoldin complex that chaperones nascent actin (see MIM 102560) and alpha- and beta-tubulin (see MIM 602529 and MIM 191130, respectively) chains pending their transfer to the cytosolic chaperonin containing TCP1 (MIM 186980) (CCT) complex (Hansen et al., 1999 [PubMed 10209023]).

Target Details

Aliases: H2 KE2 antibody, H2KE2 antibody, HKE2 antibody, HLA class II region expressed gene KE2 antibody, KE 2 antibody, KE2 antibody, KE2 protein antibody, KE2, mouse, homolog of antibody, PFD6_HUMAN antibody, Pfdn6 antibody, Prefoldin subunit 6 antibody, Protein Ke2 antibody

UniProt: [O15212](#)

Pathways: [Unfolded Protein Response](#)

Application Details

Application Notes: ELISA:1:2000-1:5000, WB:1:500-1:2000, IHC:1:25-1:100,

Restrictions: For Research Use only

Handling

Format: Liquid

Buffer: -20 °C, pH 7.4 PBS, 0.05 % Sodium azide, 40 % Glycerol

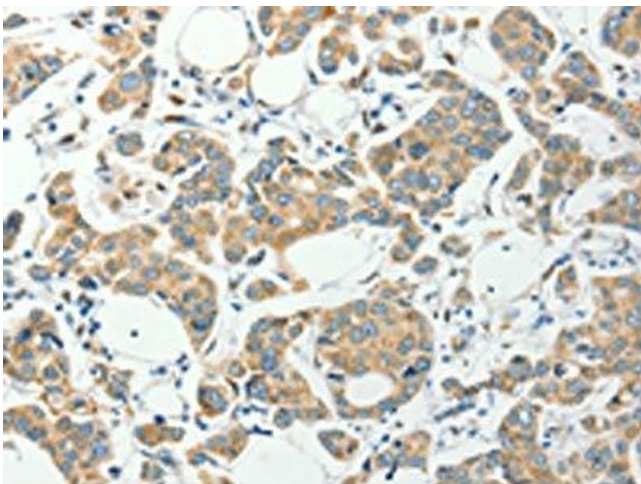
Preservative: Sodium azide

Precaution of Use: This product contains Sodium azide: a POISONOUS AND HAZARDOUS SUBSTANCE which should be handled by trained staff only.

Storage: -20 °C,-80 °C

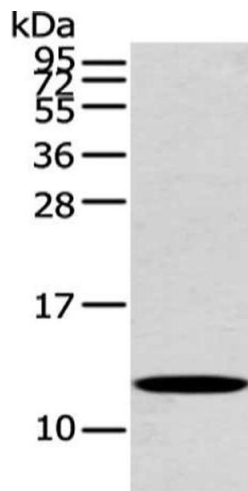
Storage Comment: Upon receipt, store at -20°C or -80°C. Avoid repeated freeze.

Images



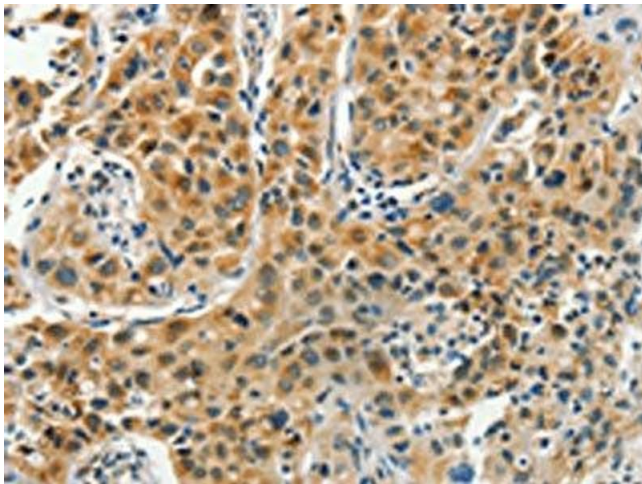
Immunohistochemistry

Image 1. The image on the left is immunohistochemistry of paraffin-embedded Human colon cancer tissue using ABIN7191847(PFDN6 Antibody) at dilution 1/35, on the right is treated with synthetic peptide. (Original magnification: x200)



Western Blotting

Image 2. Gel: 12 % SDS-PAGE, Lysate: 40 µg, Lane: Mouse heart tissue, Primary antibody: ABIN7191847(PFDN6 Antibody) at dilution 1/250 dilution, Secondary antibody: Goat anti rabbit IgG at 1/8000 dilution, Exposure time: 20 seconds



Immunohistochemistry

Image 3. The image on the left is immunohistochemistry of paraffin-embedded Human lung cancer tissue using ABIN7191847(PFDN6 Antibody) at dilution 1/35, on the right is treated with synthetic peptide. (Original magnification: x200)