

Datasheet for ABIN7191852

**anti-PFN2 antibody**

3 Images

[Go to Product page](#)

## Overview

Quantity:	100 µL
Target:	PFN2
Reactivity:	Human
Host:	Rabbit
Clonality:	Polyclonal
Conjugate:	This PFN2 antibody is un-conjugated
Application:	Western Blotting (WB), ELISA, Immunohistochemistry (IHC)

## Product Details

Immunogen:	Synthetic peptide of Human PFN2
Isotype:	IgG
Cross-Reactivity:	Human, Mouse, Rat
Purification:	Antigen affinity purification

## Target Details

Target:	PFN2
Alternative Name:	PFN2 ( <a href="#">PFN2 Products</a> )
Background:	Background: The protein encoded by this gene is a ubiquitous actin monomer-binding protein belonging to the profilin family. It is thought to regulate actin polymerization in response to extracellular signals. There are two alternatively spliced transcript variants encoding different isoforms described for this gene. Binds to actin and affects the structure of the cytoskeleton. At

## Target Details

high concentrations, profilin prevents the polymerization of actin, whereas it enhances it at low concentrations. By binding to PIP2, it inhibits the formation of IP3 and DG.

Aliases: D3S1319E antibody, PFL antibody, PFN 2 antibody, Pfn2 antibody, PROF2\_HUMAN antibody, Profilin II antibody, Profilin-2 antibody, Profilin2 antibody, ProfilinII antibody

UniProt: [P35080](#)

Pathways: [Regulation of Actin Filament Polymerization](#), [Synaptic Vesicle Exocytosis](#)

## Application Details

Application Notes: ELISA:1:1000-1:5000, WB:1:500-1:2000, IHC:1:25-1:100,

Restrictions: For Research Use only

## Handling

Format: Liquid

Buffer: -20 °C, pH 7.4 PBS, 0.05 % Sodium azide, 40 % Glycerol

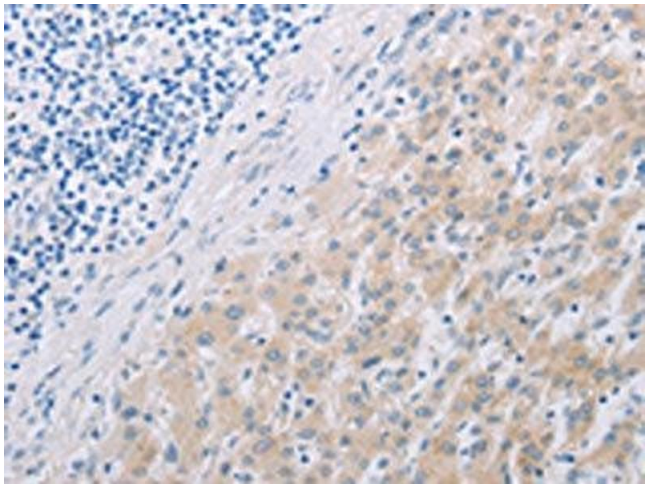
Preservative: Sodium azide

Precaution of Use: This product contains Sodium azide: a POISONOUS AND HAZARDOUS SUBSTANCE which should be handled by trained staff only.

Storage: -20 °C,-80 °C

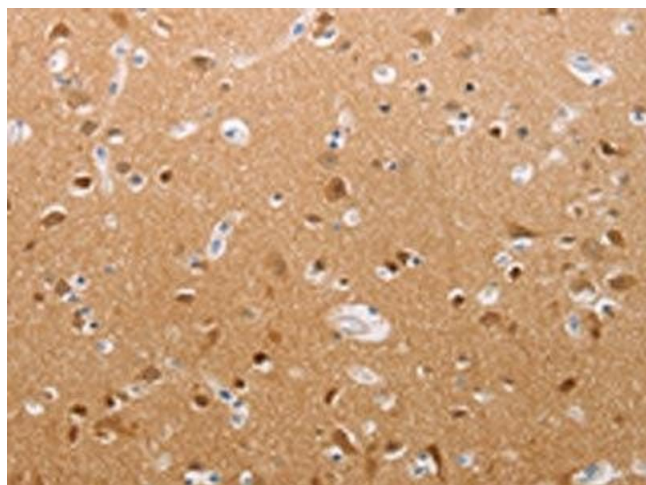
Storage Comment: Upon receipt, store at -20°C or -80°C. Avoid repeated freeze.

## Images



### Immunohistochemistry

**Image 1.** The image on the left is immunohistochemistry of paraffin-embedded Human liver cancer tissue using ABIN7191852(PFN2 Antibody) at dilution 1/30, on the right is treated with synthetic peptide. (Original magnification: x200)



### Immunohistochemistry

**Image 2.** The image on the left is immunohistochemistry of paraffin-embedded Human brain tissue using ABIN7191852(PFN2 Antibody) at dilution 1/30, on the right is treated with synthetic peptide. (Original magnification: x200)



### Western Blotting

**Image 3.** Gel: 10 % SDS-PAGE, Lysate: 40 µg, Lane: Human fetal brain tissue, Primary antibody: ABIN7191852(PFN2 Antibody) at dilution 1/450, Secondary antibody: Goat anti rabbit IgG at 1/8000 dilution, Exposure time: 3 minutes