

Datasheet for ABIN7191864

anti-PHKA2 antibody**2** Images[Go to Product page](#)

Overview

Quantity:	100 µL
Target:	PHKA2
Reactivity:	Human
Host:	Rabbit
Clonality:	Polyclonal
Conjugate:	This PHKA2 antibody is un-conjugated
Application:	ELISA, Immunohistochemistry (IHC)

Product Details

Immunogen:	Synthetic peptide of Human PHKA2
Isotype:	IgG
Cross-Reactivity:	Human
Purification:	Antigen affinity purification

Target Details

Target:	PHKA2
Alternative Name:	PHKA2 (PHKA2 Products)
Background:	Background: Phosphorylase kinase is a polymer of 16 subunits, four each of alpha, beta, gamma and delta. The alpha subunit includes the skeletal muscle and hepatic isoforms, and the hepatic isoform is encoded by this gene. The beta subunit is the same in both the muscle and hepatic isoforms, and encoded by one gene. The gamma subunit also includes the skeletal

Target Details

muscle and hepatic isoforms, which are encoded by two different genes. The delta subunit is a calmodulin and can be encoded by three different genes.

Aliases: PHKA2 antibody, PHKLA antibody, PYKPhosphorylase b kinase regulatory subunit alpha antibody, liver isoform antibody, Phosphorylase kinase alpha L subunit antibody

UniProt: [P46019](#)

Pathways: [Cellular Glucan Metabolic Process](#)

Application Details

Application Notes: ELISA:1:1000-1:2000, IHC:1:25-1:100,

Restrictions: For Research Use only

Handling

Format: Liquid

Buffer: -20 °C, pH 7.4 PBS, 0.05 % Sodium azide, 40 % Glycerol

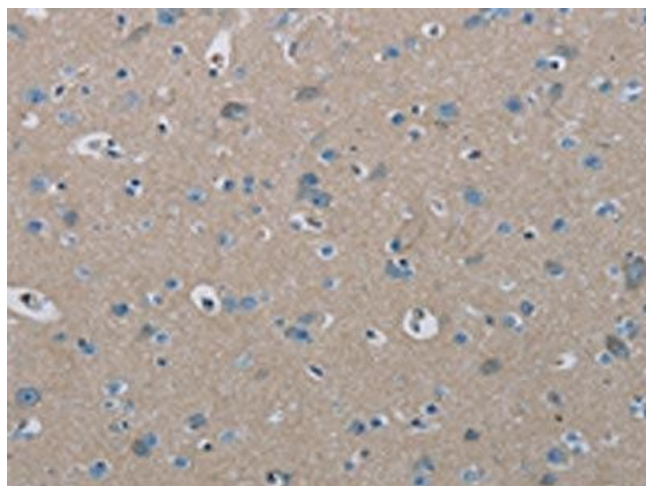
Preservative: Sodium azide

Precaution of Use: This product contains Sodium azide: a POISONOUS AND HAZARDOUS SUBSTANCE which should be handled by trained staff only.

Storage: -20 °C,-80 °C

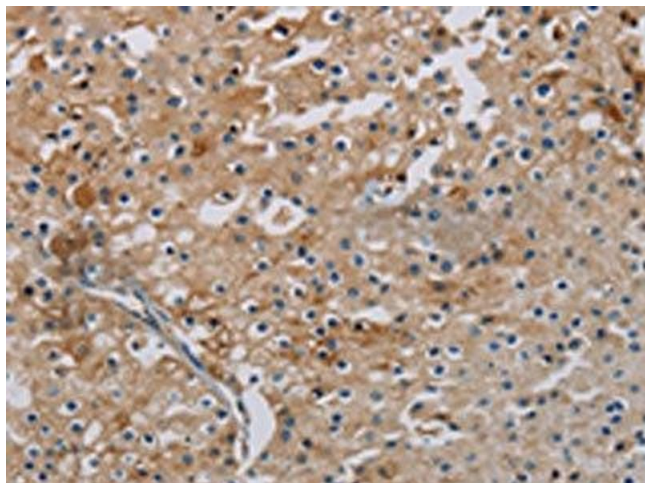
Storage Comment: Upon receipt, store at -20°C or -80°C. Avoid repeated freeze.

Images



Immunohistochemistry

Image 1. The image on the left is immunohistochemistry of paraffin-embedded Human brain tissue using ABIN7191864(PHKA2 Antibody) at dilution 1/30, on the right is treated with synthetic peptide. (Original magnification: x200)



Immunohistochemistry

Image 2. The image on the left is immunohistochemistry of paraffin-embedded Human prostate cancer tissue using ABIN7191864(PHKA2 Antibody) at dilution 1/30, on the right is treated with synthetic peptide. (Original magnification: x200)