



[Go to Product page](#)

Datasheet for ABIN7191867

anti-PHKG1 antibody

3 Images

Overview

Quantity:	100 µL
Target:	PHKG1
Reactivity:	Human
Host:	Rabbit
Clonality:	Polyclonal
Conjugate:	This PHKG1 antibody is un-conjugated
Application:	Western Blotting (WB), ELISA, Immunohistochemistry (IHC)

Product Details

Immunogen:	Synthetic peptide of Human PHKG1
Isotype:	IgG
Cross-Reactivity:	Human, Mouse, Rat
Purification:	Antigen affinity purification

Target Details

Target:	PHKG1
Alternative Name:	PHKG1 (PHKG1 Products)
Background:	Background: This gene is a member of the Ser/Thr protein kinase family and encodes a protein with one protein kinase domain and two calmodulin-binding domains. This protein is the catalytic member of a 16 subunit protein kinase complex which contains equimolar ratios of 4 subunit types. The complex is a crucial glycogenolytic regulatory enzyme. This gene has two

Target Details

pseudogenes at chromosome 7q11.21 and one at chromosome 11p11.12. Multiple transcript variants encoding different isoforms have been found for this gene.

Aliases: PHK gamma M antibody, PHK-gamma-M antibody, Phkg antibody, PHKG1 antibody, PHKG1_HUMAN antibody, PHKIN01 antibody, Phosphorylase b kinase gamma catalytic chain antibody, Phosphorylase b kinase gamma catalytic chain skeletal muscle/heart isoform antibody, phosphorylase b kinase gamma catalytic chain, skeletal muscle isoform antibody, phosphorylase kinase gamma antibody, phosphorylase kinase subunit gamma 1 antibody, Phosphorylase kinase subunit gamma-1 antibody, phosphorylase kinase, gamma 1 (muscle) antibody, Phosphorylase kinase, muscle, gamma-1 antibody, Serine/threonine-protein kinase PHKG1 antibody, skeletal muscle/heart isoform antibody

UniProt: [Q16816](#)

Pathways: [Cellular Glucan Metabolic Process](#)

Application Details

Application Notes: ELISA:1:1000-1:2000, WB:1:200-1:1000, IHC:1:25-1:100,

Restrictions: For Research Use only

Handling

Format: Liquid

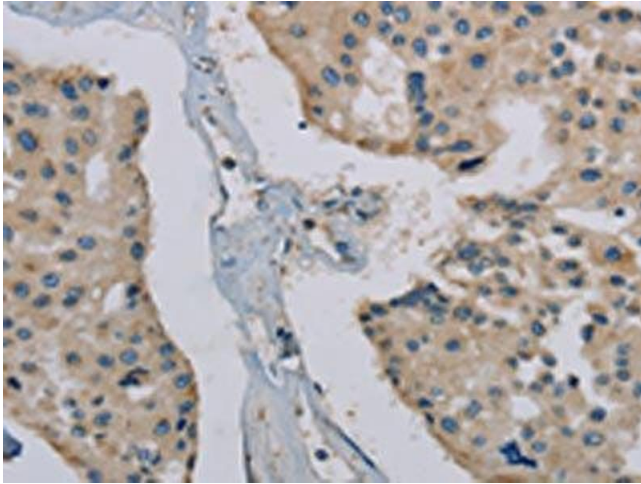
Buffer: -20 °C, pH 7.4 PBS, 0.05 % Sodium azide, 40 % Glycerol

Preservative: Sodium azide

Precaution of Use: This product contains Sodium azide: a POISONOUS AND HAZARDOUS SUBSTANCE which should be handled by trained staff only.

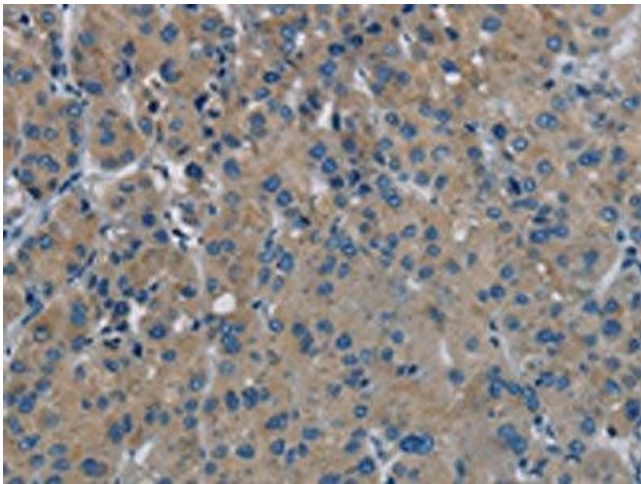
Storage: -20 °C,-80 °C

Storage Comment: Upon receipt, store at -20°C or -80°C. Avoid repeated freeze.



Immunohistochemistry

Image 1. The image on the left is immunohistochemistry of paraffin-embedded Human prostate cancer tissue using ABIN7191867(PHKG1 Antibody) at dilution 1/20, on the right is treated with synthetic peptide. (Original magnification: x200)



Immunohistochemistry

Image 2. The image on the left is immunohistochemistry of paraffin-embedded Human liver cancer tissue using ABIN7191867(PHKG1 Antibody) at dilution 1/20, on the right is treated with synthetic peptide. (Original magnification: x200)



Western Blotting

Image 3. Gel: 8 % SDS-PAGE, Lysate: 40 µg, Lane: Mouse skeletal muscle tissue, Primary antibody: ABIN7191867(PHKG1 Antibody) at dilution 1/200, Secondary antibody: Goat anti rabbit IgG at 1/8000 dilution, Exposure time: 1 minute