

Datasheet for ABIN7191891

## anti-PIP5K1C antibody

3 Images



[Go to Product page](#)

### Overview

Quantity:	100 µL
Target:	PIP5K1C
Reactivity:	Human
Host:	Rabbit
Clonality:	Polyclonal
Conjugate:	This PIP5K1C antibody is un-conjugated
Application:	Western Blotting (WB), ELISA, Immunohistochemistry (IHC)

### Product Details

Immunogen:	Synthetic peptide of Human PIP5K1C
Isotype:	IgG
Cross-Reactivity:	Human, Mouse, Rat
Purification:	Antigen affinity purification

### Target Details

Target:	PIP5K1C
Alternative Name:	PIP5K1C ( <a href="#">PIP5K1C Products</a> )
Background:	Background: This locus encodes a type I phosphatidylinositol 4-phosphate 5-kinase. The encoded protein catalyzes phosphorylation of phosphatidylinositol 4-phosphate, producing phosphatidylinositol 4,5-bisphosphate. This enzyme is found at synapses and has been found to play roles in endocytosis and cell migration. Mutations at this locus have been associated

## Target Details

---

with lethal congenital contractural syndrome. Alternatively spliced transcript variants encoding different isoforms have been described.

Aliases: Diphosphoinositide kinase antibody, LCCS3 antibody, Phosphatidylinositol-4-phosphate 5-kinase type I gamma antibody, Phosphatidylinositol-4-phosphate 5-kinase type-1 gamma antibody, PI51C antibody, PI51C\_HUMAN antibody, PIP5K GAMMA antibody, PIP5K1-gamma antibody, Pip5k1c antibody, PIP5KIgamma antibody, PtdIns(4)P 5 kinase gamma antibody, PtdIns(4)P-5-kinase 1 gamma antibody, Type I PIP kinase antibody

---

UniProt: [O60331](#)

---

Pathways: [PI3K-Akt Signaling](#), [Inositol Metabolic Process](#), [Cell-Cell Junction Organization](#), [Maintenance of Protein Location](#), [Synaptic Vesicle Exocytosis](#)

## Application Details

---

---

Application Notes: ELISA:1:2000-1:5000, WB:1:500-1:2000, IHC:1:25-1:100,

---

Restrictions: For Research Use only

## Handling

---

---

Format: Liquid

---

Buffer: -20 °C, pH 7.4 PBS, 0.05 % Sodium azide, 40 % Glycerol

---

Preservative: Sodium azide

---

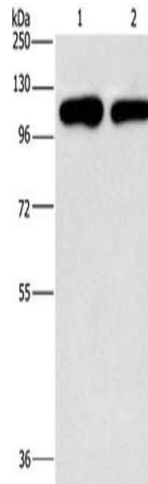
Precaution of Use: This product contains Sodium azide: a POISONOUS AND HAZARDOUS SUBSTANCE which should be handled by trained staff only.

---

Storage: -20 °C,-80 °C

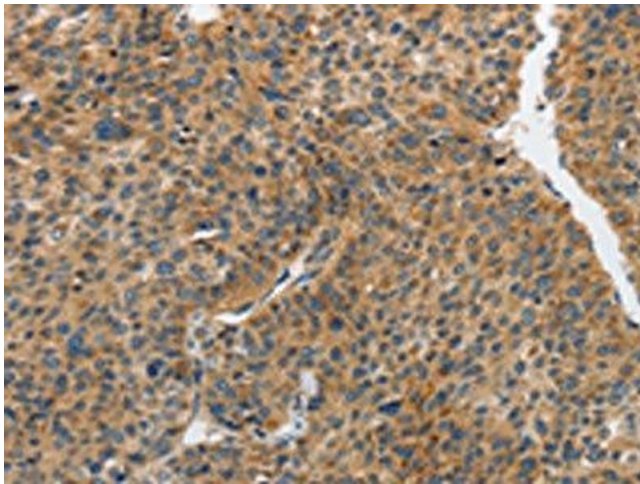
---

Storage Comment: Upon receipt, store at -20°C or -80°C. Avoid repeated freeze.



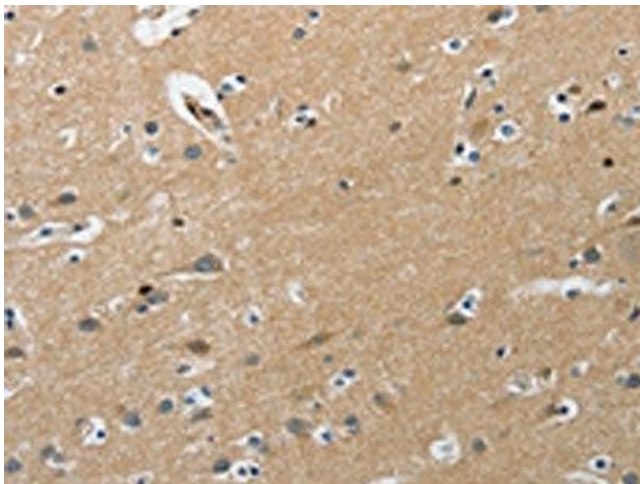
### Western Blotting

**Image 1.** Gel: 10 % SDS-PAGE, Lysate: 40 µg, Lane 1-2: A431 cells, HeLa cells, Primary antibody: ABIN7191891 (PIP5K1C Antibody) at dilution 1/500, Secondary antibody: Goat anti rabbit IgG at 1/8000 dilution, Exposure time: 2 minutes



### Immunohistochemistry

**Image 2.** The image on the left is immunohistochemistry of paraffin-embedded Human liver cancer tissue using ABIN7191891 (PIP5K1C Antibody) at dilution 1/25, on the right is treated with synthetic peptide. (Original magnification: x200)



### Immunohistochemistry

**Image 3.** The image on the left is immunohistochemistry of paraffin-embedded Human brain tissue using ABIN7191891 (PIP5K1C Antibody) at dilution 1/25, on the right is treated with synthetic peptide. (Original magnification: x200)