

Datasheet for ABIN7191895

**anti-PIWIL3 antibody****2** Images[Go to Product page](#)

## Overview

Quantity:	100 µL
Target:	PIWIL3
Reactivity:	Human
Host:	Rabbit
Clonality:	Polyclonal
Conjugate:	This PIWIL3 antibody is un-conjugated
Application:	ELISA, Immunohistochemistry (IHC)

## Product Details

Immunogen:	Synthetic peptide of Human PIWIL3
Isotype:	IgG
Cross-Reactivity:	Human
Purification:	Antigen affinity purification

## Target Details

Target:	PIWIL3
Alternative Name:	PIWIL3 ( <a href="#">PIWIL3 Products</a> )
Background:	Background: This gene encodes a member of the PIWI subfamily of Argonaute family proteins. This subfamily of proteins contains a PAZ domain, found in proteins involved in RNA-mediated gene silencing, and a C-terminal Piwi domain. The encoded protein is thought to function in maintenance of germline cells. Multiple transcript variants encoding different isoforms have

## Target Details

been found for this gene.

Aliases: HIWI3 antibody, Piwi like 3 antibody, Piwi-like protein 3 antibody, piwi-like RNA-mediated gene silencing 3 antibody, PIWIL3 antibody, PIWL3\_HUMAN antibody

UniProt: [Q7Z3Z3](#)

## Application Details

Application Notes: ELISA:1:1000-1:2000, IHC:1:15-1:50,

Restrictions: For Research Use only

## Handling

Format: Liquid

Buffer: -20 °C, pH 7.4 PBS, 0.05 % Sodium azide, 40 % Glycerol

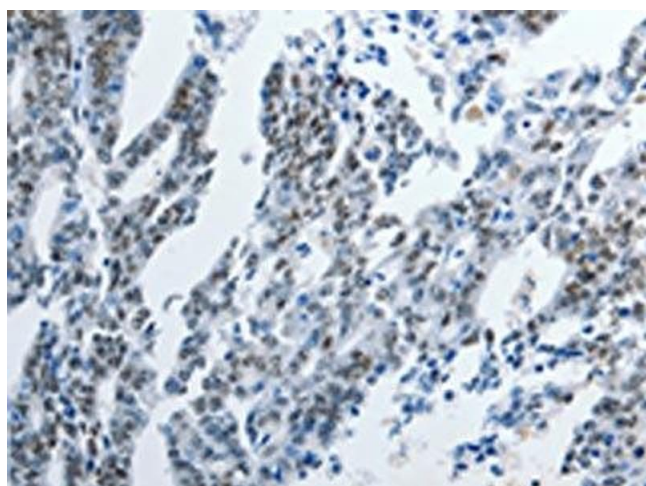
Preservative: Sodium azide

Precaution of Use: This product contains Sodium azide: a POISONOUS AND HAZARDOUS SUBSTANCE which should be handled by trained staff only.

Storage: -20 °C,-80 °C

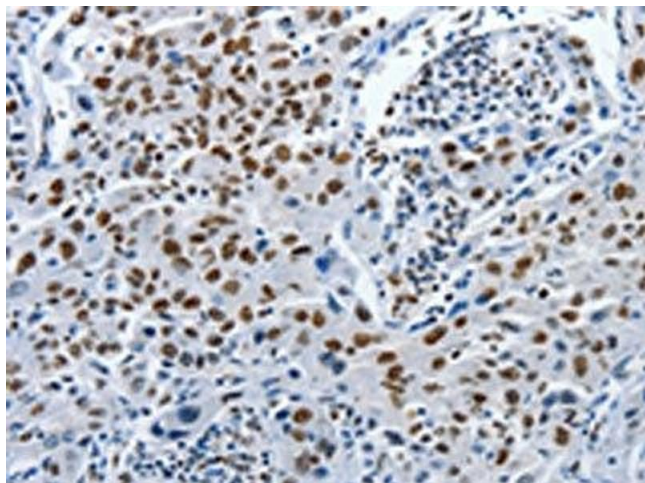
Storage Comment: Upon receipt, store at -20°C or -80°C. Avoid repeated freeze.

## Images



### Immunohistochemistry

**Image 1.** The image on the left is immunohistochemistry of paraffin-embedded Human gastric cancer tissue using ABIN7191895(PIWIL3 Antibody) at dilution 1/20, on the right is treated with synthetic peptide. (Original magnification: x200)



#### Immunohistochemistry

**Image 2.** The image on the left is immunohistochemistry of paraffin-embedded Human lung cancer tissue using ABIN7191895(PIWIL3 Antibody) at dilution 1/20, on the right is treated with synthetic peptide. (Original magnification: x200)