

Datasheet for ABIN7191931
anti-Plexin A3 antibody[Go to Product page](#)

1 Image

Overview

Quantity:	100 µL
Target:	Plexin A3 (PLXNA3)
Reactivity:	Human
Host:	Rabbit
Clonality:	Polyclonal
Application:	ELISA, Immunohistochemistry (IHC)

Product Details

Immunogen:	Synthetic peptide of Human PLXNA3
Isotype:	IgG
Cross-Reactivity:	Human, Mouse, Rat
Purification:	Antigen affinity purification

Target Details

Target:	Plexin A3 (PLXNA3)
Alternative Name:	PLXNA3 (PLXNA3 Products)
Background:	Background: This gene encodes a member of the plexin class of proteins. The encoded protein is a class 3 semaphorin receptor, and may be involved in cytoskeletal remodeling and as well as apoptosis. Studies of a similar gene in zebrafish suggest that it is important for axon pathfinding in the developing nervous system. This gene may be associated with tumor progression.

Target Details

Aliases: PLXNA3 antibody, PLXN4 antibody, SEX antibody, Plexin-A3 antibody, Plexin-4 antibody, Semaphorin receptor SEX antibody

UniProt: [P51805](#)

Pathways: [Regulation of Cell Size](#)

Application Details

Application Notes: ELISA:1:2000-1:10000, IHC:1:30-1:150,

Restrictions: For Research Use only

Handling

Format: Liquid

Buffer: -20 °C, pH 7.4 PBS, 0.05 % Sodium azide, 40 % Glycerol

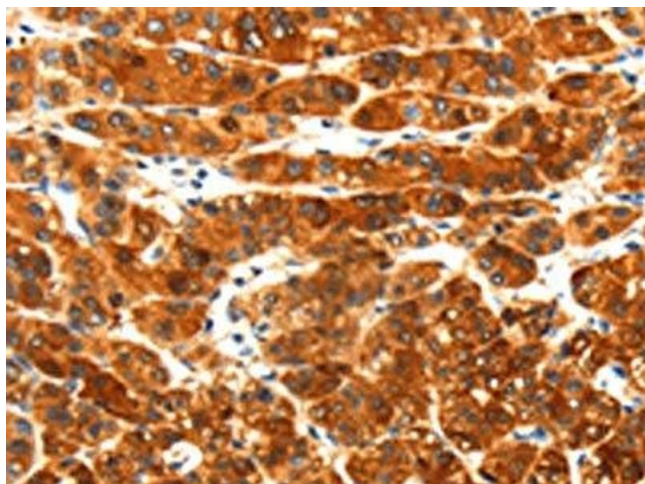
Preservative: Sodium azide

Precaution of Use: This product contains Sodium azide: a POISONOUS AND HAZARDOUS SUBSTANCE which should be handled by trained staff only.

Storage: -20 °C,-80 °C

Storage Comment: Upon receipt, store at -20°C or -80°C. Avoid repeated freeze.

Images



Immunohistochemistry

Image 1. The image on the left is immunohistochemistry of paraffin-embedded Human liver cancer tissue using ABIN7191931(PLXNA3 Antibody) at dilution 1/25, on the right is treated with synthetic peptide. (Original magnification: x200)