

Datasheet for ABIN7191961  
**anti-POU2AF1 antibody**[Go to Product page](#)

## 2 Images

## Overview

Quantity:	100 µL
Target:	POU2AF1
Reactivity:	Human
Host:	Rabbit
Clonality:	Polyclonal
Conjugate:	This POU2AF1 antibody is un-conjugated
Application:	ELISA, Immunohistochemistry (IHC)

## Product Details

Immunogen:	Synthetic peptide of Human POU2AF1
Isotype:	IgG
Cross-Reactivity:	Human, Mouse
Purification:	Antigen affinity purification

## Target Details

Target:	POU2AF1
Alternative Name:	POU2AF1 ( <a href="#">POU2AF1 Products</a> )
Background:	Background: POU domain class 2-associating factor 1 is a protein that in humans is encoded by the POU2AF1 gene. POU2AF1 has been shown to interact with POU2F1 and SIAH1. POU domain class 2-associating factor 1 is a protein that in humans is encoded by the POU2AF1 gene. Transcriptional coactivator that specifically associates with either OCT1 or OCT2. It

## Target Details

encourages the OCT1 mediated promoter activity and to a lesser extent, that of OCT2. It has no intrinsic DNA-binding activity. It recognizes the POU domains of OCT1 and OCT2. It is necessary for the response of B-cells to antigens and required for the formation of germinal centers.

Aliases: B cell Oct binding protein 1 antibody, B cell specific coactivator OBF 1 antibody, B cell specific coactivator OBF1 antibody, B-cell-specific coactivator OBF-1 antibody, BOB 1 antibody, BOB-1 antibody, OBF 1 antibody, OBF1 antibody, OBF1\_HUMAN antibody, OCA B antibody, OCA-B antibody, OCAB antibody, OCT binding factor 1 antibody, OCT-binding factor 1 antibody, POU class 2 associating factor 1 antibody, POU domain class 2 associating factor 1 antibody, POU domain class 2-associating factor 1 antibody, Pou2af1 antibody

UniProt: [Q16633](#)

## Application Details

Application Notes: ELISA:1:1000-1:2000, IHC:1:10-1:50,

Restrictions: For Research Use only

## Handling

Format: Liquid

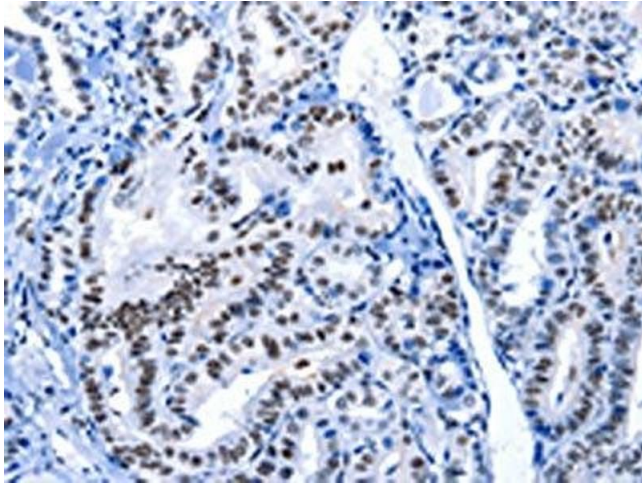
Buffer: -20 °C, pH 7.4 PBS, 0.05 % Sodium azide, 40 % Glycerol

Preservative: Sodium azide

Precaution of Use: This product contains Sodium azide: a POISONOUS AND HAZARDOUS SUBSTANCE which should be handled by trained staff only.

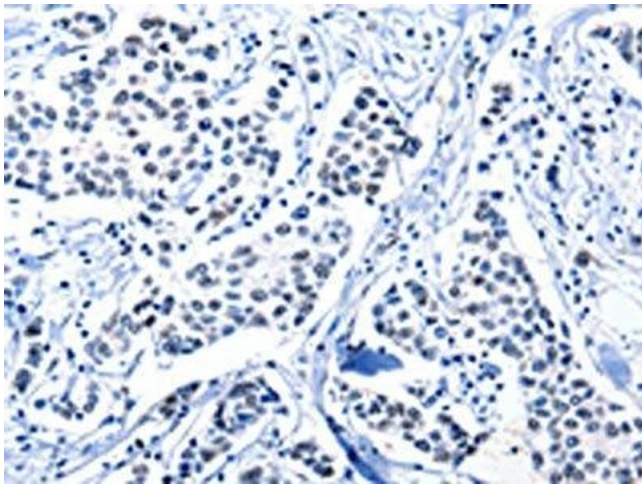
Storage: -20 °C, -80 °C

Storage Comment: Upon receipt, store at -20°C or -80°C. Avoid repeated freeze.



#### Immunohistochemistry

**Image 1.** The image on the left is immunohistochemistry of paraffin-embedded Human thyroid cancer tissue using ABIN7191961(POU2AF1 Antibody) at dilution 1/15, on the right is treated with synthetic peptide. (Original magnification: x200)



#### Immunohistochemistry

**Image 2.** The image on the left is immunohistochemistry of paraffin-embedded Human breast cancer tissue using ABIN7191961(POU2AF1 Antibody) at dilution 1/15, on the right is treated with synthetic peptide. (Original magnification: x200)