

Datasheet for ABIN7191964

**anti-POU6F2 antibody**

3 Images

[Go to Product page](#)

## Overview

|              |  |
|--------------|--|
| Quantity:    | 100 µL   |
| Target:      | POU6F2   |
| Reactivity:  | Human  |
| Host:        | Rabbit   |
| Clonality:   | Polyclonal   |
| Conjugate:   | This POU6F2 antibody is un-conjugated                    |
| Application: | Western Blotting (WB), ELISA, Immunohistochemistry (IHC) |

## Product Details

|                   |                                   |
|-------------------|-----------------------------------|
| Immunogen:        | Synthetic peptide of Human POU6F2 |
| Isotype:          | IgG                               |
| Cross-Reactivity: | Human, Mouse, Rat                 |
| Purification:     | Antigen affinity purification     |

## Target Details

|                   |  |
|-------------------|--|
| Target:           | POU6F2   |
| Alternative Name: | POU6F2 ( <a href="#">POU6F2 Products</a> )   |
| Background:       | Background: This gene encodes a member of the POU protein family characterized by the presence of a bipartite DNA binding domain, consisting of a POU-specific domain and a homeodomain, separated by a variable polylinker. The DNA binding domain may bind to DNA as monomers or as homo- and/or heterodimers, in a sequence-specific manner. The POU family |

## Target Details

members are transcriptional regulators, many of which are known to control cell type-specific differentiation pathways. This gene is a tumor suppressor involved in Wilms tumor (WT) predisposition.

Aliases: POU6F2 antibody, RPF1 antibody, POU domain antibody, class 6 antibody, transcription factor 2 antibody, Retina-derived POU domain factor 1 antibody, RPF-1 antibody

UniProt: [P78424](#)

## Application Details

Application Notes: ELISA:1:1000-1:2000, WB:1:200-1:1000, IHC:1:50-1:200,

Restrictions: For Research Use only

## Handling

Format: Liquid

Buffer: -20 °C, pH 7.4 PBS, 0.05 % Sodium azide, 40 % Glycerol

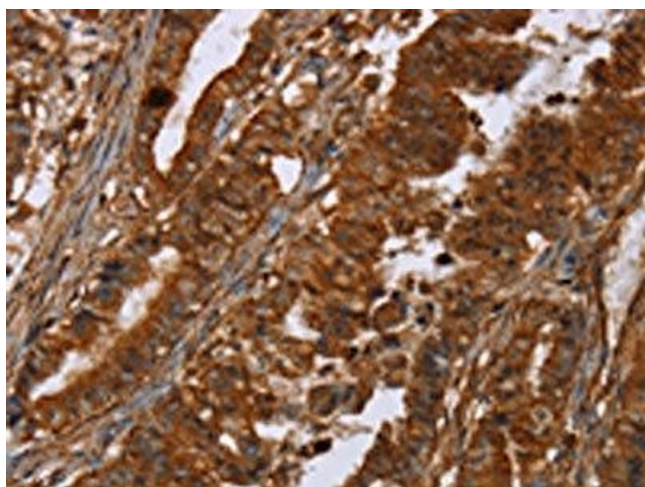
Preservative: Sodium azide

Precaution of Use: This product contains Sodium azide: a POISONOUS AND HAZARDOUS SUBSTANCE which should be handled by trained staff only.

Storage: -20 °C,-80 °C

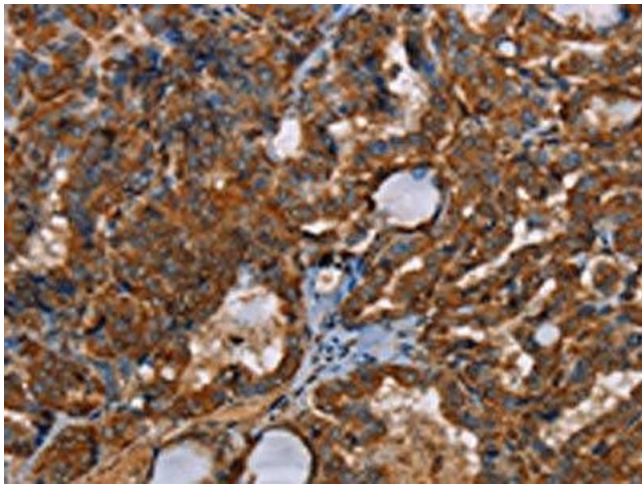
Storage Comment: Upon receipt, store at -20°C or -80°C. Avoid repeated freeze.

## Images



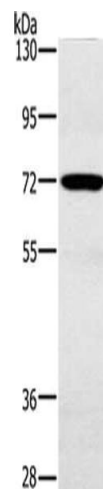
### Immunohistochemistry

**Image 1.** The image on the left is immunohistochemistry of paraffin-embedded Human esophagus cancer tissue using ABIN7191964(POU6F2 Antibody) at dilution 1/30, on the right is treated with synthetic peptide. (Original magnification: x200)



### Immunohistochemistry

**Image 2.** The image on the left is immunohistochemistry of paraffin-embedded Human thyroid cancer tissue using ABIN7191964(POU6F2 Antibody) at dilution 1/30, on the right is treated with synthetic peptide. (Original magnification: x200)



### Western Blotting

**Image 3.** Gel: 6 % SDS-PAGE, Lysate: 40 µg, Lane: Mouse heart tissue, Primary antibody: ABIN7191964(POU6F2 Antibody) at dilution 1/200, Secondary antibody: Goat anti rabbit IgG at 1/8000 dilution, Exposure time: 30 seconds