

Datasheet for ABIN7191987
anti-PPP2R3A antibody[Go to Product page](#)

2 Images

Overview

Quantity:	100 µL
Target:	PPP2R3A
Reactivity:	Human
Host:	Rabbit
Clonality:	Polyclonal
Conjugate:	This PPP2R3A antibody is un-conjugated
Application:	Western Blotting (WB), ELISA, Immunohistochemistry (IHC)

Product Details

Immunogen:	Synthetic peptide of Human PPP2R3A
Isotype:	IgG
Cross-Reactivity:	Human
Purification:	Antigen affinity purification

Target Details

Target:	PPP2R3A
Alternative Name:	PPP2R3A (PPP2R3A Products)
Background:	Background: This gene encodes one of the regulatory subunits of the protein phosphatase 2. Protein phosphatase 2 (formerly named type 2A) is one of the four major Ser/Thr phosphatases and is implicated in the negative control of cell growth and division. Protein phosphatase 2 holoenzymes are heterotrimeric proteins composed of a structural subunit A, a

Target Details

catalytic subunit C, and a regulatory subunit B. The regulatory subunit is encoded by a diverse set of genes that have been grouped into the B/PR55, B'/PR61, and B''/PR72 families.

Aliases: A1118493 antibody, DNA for thyroid hormone receptor binding site (258bp) antibody, P2R3A_HUMAN antibody, PP2A subunit B B''-PR72/PR130 antibody, PP2A subunit B B72/B130 isoforms antibody, PP2A subunit B isoform PR72/PR130 antibody, PP2A subunit B isoform R3 isoform antibody, PP2A subunit B isoforms B''-PR72/PR130 antibody, PP2A subunit B isoforms B72/B130 antibody, PP2A subunit B PR72/PR130 isoforms antibody, PP2A subunit B R3 isoform antibody, PPP2R3 antibody, Ppp2r3a antibody, PR130 antibody, PR59 antibody, PR72 antibody, Protein phosphatase 2 (formerly 2A) regulatory subunit B'' alpha antibody, Serine/threonine protein phosphatase 2A 72/130 kDa regulatory subunit B antibody, Serine/threonine-protein phosphatase 2A 72/130 kDa regulatory subunit B antibody, Serine/threonine-protein phosphatase 2A regulatory subunit B'' subunit alpha antibody

UniProt: [Q06190](#)

Pathways: [PI3K-Akt Signaling](#)

Application Details

Application Notes: ELISA:1:1000-1:2000, WB:1:200-1:1000, IHC:1:50-1:200,

Restrictions: For Research Use only

Handling

Format: Liquid

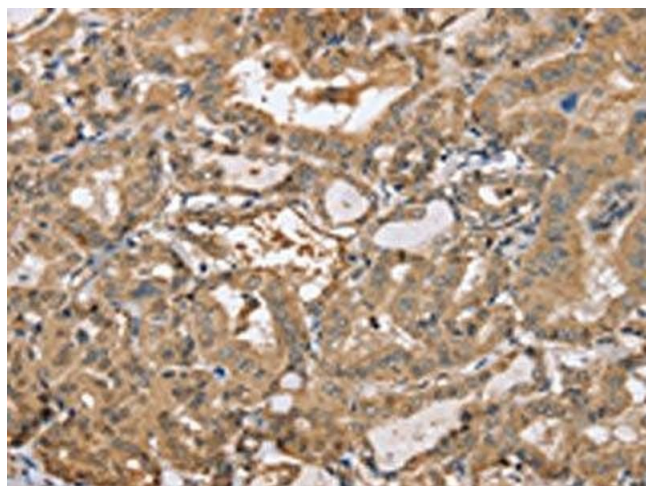
Buffer: -20 °C, pH 7.4 PBS, 0.05 % Sodium azide, 40 % Glycerol

Preservative: Sodium azide

Precaution of Use: This product contains Sodium azide: a POISONOUS AND HAZARDOUS SUBSTANCE which should be handled by trained staff only.

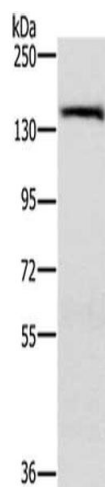
Storage: -20 °C,-80 °C

Storage Comment: Upon receipt, store at -20°C or -80°C. Avoid repeated freeze.



Immunohistochemistry

Image 1. The image on the left is immunohistochemistry of paraffin-embedded Human thyroid cancer tissue using ABIN7191987(PPP2R3A Antibody) at dilution 1/30, on the right is treated with synthetic peptide. (Original magnification: x200)



Western Blotting

Image 2. Gel: 6 % SDS-PAGE, Lysate: 40 µg, Lane: A172 cells, Primary antibody: ABIN7191987(PPP2R3A Antibody) at dilution 1/200, Secondary antibody: Goat anti rabbit IgG at 1/8000 dilution, Exposure time: 30 seconds